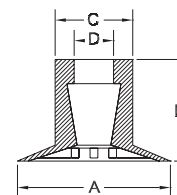


# CUPS — FLAT



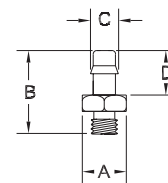
Part Number	Approx. Area-in <sup>2</sup>	A O.D.	B Height	C	D Thru Hole	Cleats	Material	Fitting Group
VCR-F15P	.08	.66	.47	.36	.15	Yes	C/S	3

**Material:** C Chloroprene Color – Black Temperature Range (-32°F to +212°F)  
 S Silicone Color – Translucent Temperature Range (-92°F to +392°F)



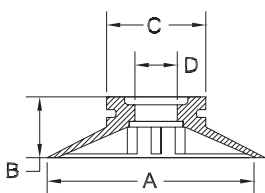
**Fitting Group (1-3)**

Part Number	Thread Size	A (Hex)	B	C	D	Thru Hole
VCF1-1032M	10-32 Male	.312	.510	.167	.320	.097
VCF2-1032M	10-32 Male	.312	.593	.222	.308	.097
VCF3-1032M	10-32 Male	.312	.659	.234	.365	.097



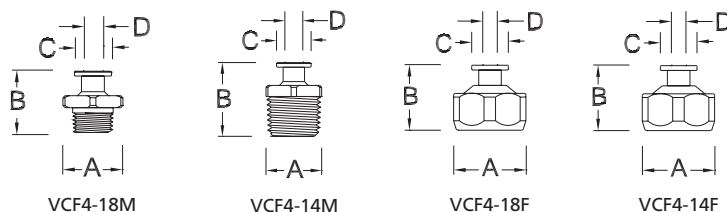
**HOW TO ORDER:**  
 Cup only — part number and material, i.e., VCR-F15P-S  
 Fitting only — part number, i.e., VCF2-1032M  
 Cup & Fitting — cup number, material with fitting group number only and the thread size, i.e., VCRF15P-S-2-1032M

# CUPS — FLAT



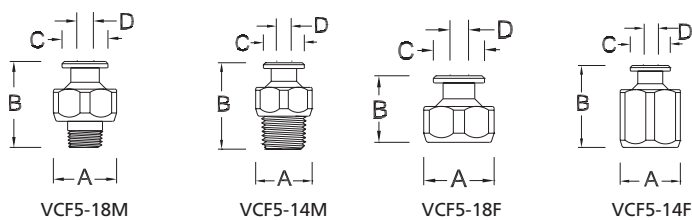
Part Number	Approx. Area-in <sup>2</sup>	A O.D.	B Height	C	D Thru Hole	Cleats	Material	Fitting Group
VCR-F20P	.15	0.87	0.32	0.57	.21	Yes	C/S	4
VCR-F25P	.23	1.10	0.36	0.57	.21	Yes	C/S	4
VCR-F30P	.32	1.27	0.39	0.57	.20	Yes	C/S	4
VCR-F40P	.54	1.65	0.54	0.76	.26	Yes	C/S	5
VCR-F50P	.87	2.10	0.69	1.06	.43	Yes	C/S	6

**Material:** C Chloroprene Color – Black Temperature Range (-32°F to +212°F)  
 S Silicone Color – Translucent Temperature Range (-92°F to +392°F)



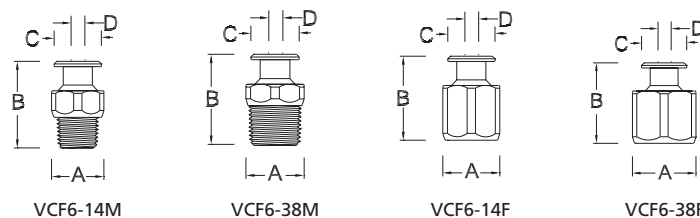
### Fitting Group 4

Part Number	Thread Size	A (Hex)	B	C	D (Thru Hole)
VCF4-18M	1/8 NPTM w/10-32 Female	.562	.575	.348	.172
VCF4-14M	1/4 NPTM	.562	.744	.348	.172
VCF4-18F	1/8 NPTF	.687	.617	.348	.172
VCF4-14F	1/4 NPTF	.750	.950	.348	.172



### Fitting Group 5

Part Number	Thread Size	A (Hex)	B	C	D (Thru Hole)
VCF5-18M	1/8 NPTM w/10-32 Female	.687	0.934	.499	.223
VCF5-14M	1/4 NPTM	.687	1.000	.499	.223
VCF5-18F	1/8 NPTF	.687	0.651	.499	.223
VCF5-14F	1/4 NPTF	.750	0.851	.499	.223

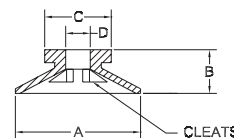


### Fitting Group 6

Part Number	Thread Size	A (Hex)	B	C	D (Thru Hole)
VCF6-14M	1/4 NPTM	.687	1.138	.620	.219
VCF6-38M	3/8 NPTM	.750	1.171	.620	.219
VCF6-14F	1/4 NPTF	.687	0.936	.620	.219
VCF6-38F	3/8 NPTF	.875	1.030	.620	.219

CUPS — FLAT

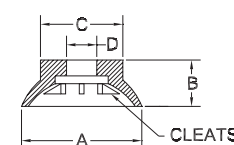
Part Number	Approx. Area-in <sup>2</sup>	A O.D.	B Height	C	D Thru Hole	Cleats	Material	Fitting Group
VC 1 .200 mini	.01	0.20	.21	.22	.06	No	V/GS/P	NF
VC 36B	.30	1.00	.34	.56	.24	Yes	V/GS/P	NF



**Note 1:** "NF" = thru-hole only, no fitting.

**Material:** **V** Vinyl Color – Blue Temperature Range (+32°F to +125°F)  
**GS** Grey Silicone\* Color – Grey Temperature Range (-92°F to +392°F)  
**P** Polyurethane\* Color – Green Temperature Range (-50°F to +400°F)

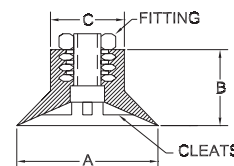
Part Number	Approx. Area-in <sup>2</sup>	A O.D.	B Height	C	D Thru Hole	Cleats	Material	Fitting Group
VC 165A	.03	0.37	.25	.375	.21	No	V/GS/P	NF
VC 25	.07	0.59	.53	.460	.25	No	V/GS/P	NF
VC 8	.45	1.51	.56	.560	.23	No	V/GS/P	NF



**Note 1:** "NF" = thru-hole only, no fitting.

**Material:** **V** Vinyl Color – Blue Temperature Range (+32°F to +125°F)  
**GS** Grey Silicone\* Color – Grey Temperature Range (-92°F to +392°F)  
**P** Polyurethane\* Color – Green Temperature Range (-50°F to +400°F)

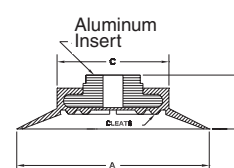
Part Number	Approx. Area-in <sup>2</sup>	A O.D.	B Height	C	D Thru Hole	Cleats	Material	Fitting Group
VC 10	0.21	1.04	0.900	0.62	N/A	No	V/GS/P	1/8 NPTF
VC 11	0.40	1.19	0.500	0.75	N/A	No	V/GS/P	1/4 NPTF
VC 2EA	0.35	1.34	0.900	0.62	N/A	Yes	V/GS/P	1/8 NPTM
VC 12	0.60	1.40	0.500	0.75	N/A	No	V/GS/P	1/4 NPTF
VC 37A	0.45	1.51	0.875	0.89	N/A	No	V/GS/P	1/4 NPTF
VC 59	1.30	2.00	0.690	1.56	N/A	Yes	V/GS/P	1/4 NPTF
VC 168	0.76	2.00	0.690	1.12	N/A	No	V/GS/P	1/4 NPTF
VC 49	2.10	2.44	2.000	1.04	N/A	Yes	V/GS/P	1/4 NPTF
VC 106	1.23	2.50	0.940	1.09	N/A	No	V/GS/P	1/4 NPTF
VC 30	1.10	3.09	1.300	1.12	N/A	No	V/GS/P	1/4 NPTF



**Note 1:** When thread size is shown, i.e., 3/8 NPT, it is a molded fitting. Consult factory for other available sizes.

**Material:** **V** Vinyl Color – Blue Temperature Range (+32°F to +125°F)  
**GS** Grey Silicone\* Color – Grey Temperature Range (-92°F to +392°F)  
**P** Polyurethane\* Color – Green Temperature Range (-50°F to +400°F)

Part Number	Approx. Area-in <sup>2</sup>	A O.D.	B Height	C	D Thru Hole	Cleats	Material	Fitting Group
VC 27A	2.07	3.25	1.15	2.23	N/A	Yes	V/GS/P	1/4 NPTF
VC 27	3.55	4.25	1.18	2.75	N/A	Yes	V/GS/P	1/4 NPTF
VC 63	4.43	4.75	1.25	1.67	N/A	Yes	V/GS/P	3/8 NPTF
VC 34	7.67	6.25	1.37	5.00	N/A	Yes	V/GS/P	3/8 NPTM



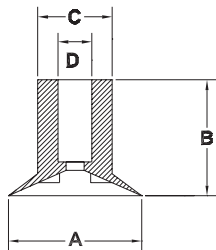
**Note 1:** When thread size is shown, i.e., 3/8 NPT, it is a molded fitting. Consult factory for other available sizes.

**Material:** **V** Vinyl Color – Blue Temperature Range (+32°F to +125°F)  
**GS** Grey Silicone\* Color – Grey Temperature Range (-92°F to +392°F)  
**P** Polyurethane\* Color – Green Temperature Range (-50°F to +400°F)

\* NON STOCK ITEM

**HOW TO ORDER:**  
*Cup only* — part number and material, i.e., VC 10-V  
*Fitting only* — not applicable  
*Cup & Fitting* — to order cup number with different fitting thread size, please specify thread size in part number, i.e., VC 10-V-1/4 NPTF

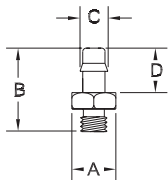
## CUPS — FLAT



Part Number	Approx. Area-in <sup>2</sup>	A O.D.	B Height	C	D Thru Hole	Cleats	Material	Fitting Group
VCN-111B	.02	0.31	.29	.18	.09	No	V	1
VCN-86B	.05	0.52	.53	.25	.12	No	V	2
VCN-95C	.09	0.66	.52	.38	.14	No	CL	2
VCN-19A	.09	0.66	.52	.37	.13	No	CL	2
VCN-19AY	.09	0.66	.52	.37	.13	No	CL	2
VCN-93B	.09	0.67	.51	.24	.15	No	V	2
VCN-19B	.09	0.67	.53	.38	.13	No	CL	2
VCN-42Y	.09	0.68	.73	.37	.16	No	Y	3
VCN-37A	.10	0.72	.51	.45	.12	No	V	2
VCN-87	.10	0.73	.29	.38	.25	No	V	NF
VCN-37B	.11	0.75	.51	.44	.13	No	V	2
VCN-36B	.14	0.84	.52	.46	.16	No	G	2
VCN-102B	.14	0.85	.44	.33	.16	No	V	2
VCN-36A	.15	0.86	.55	.51	.10	No	G	2
VCN-20C	.15	0.88	.75	.50	.16	No	O	3
VCN-20	.16	0.90	.60	.57	.21	No	CL	NF
VCN-55	.17	0.93	.52	.50	.31	No	CL	NF
VCN-69	.18	0.95	.68	.37	.16	No	V	3
VCN-54B	.18	0.95	.49	.50	.18	No	V	NF
VCN-91B	.18	0.96	.41	.51	.25	No	V	NF
VCN-91G	.18	0.96	.41	.51	.25	No	G	NF
VCN-38	.18	0.97	.59	.54	.14	No	CL	3
VCN-57	.19	0.98	.40	.54	.24	No	Y	NF
VCN-21A	.19	0.98	.57	.60	.17	No	CL	3
VCN-64	.19	0.99	.56	.54	.25	No	Y	NF
VCN-138	.19	0.99	.58	.55	.21	No	V	NF
VCN-21B	.19	0.99	.60	.57	.21	No	CL	NF
VCN-21Y	.20	1.00	.55	.57	.18	No	Y	NF

**Note 1:** "NF" = thru-hole only, no fitting.

Material:			
<b>V</b>	Vinyl	Color – Blue	Temperature Range (+32°F to +125°F)
<b>CL</b>	Vinyl	Color – Clear	Temperature Range (+32°F to +125°F)
<b>G</b>	Vinyl	Color – Green	Temperature Range (+32°F to +125°F)
<b>O</b>	Vinyl	Color – Orange	Temperature Range (+32°F to +125°F)
<b>Y</b>	Vinyl	Color – Yellow	Temperature Range (+32°F to +125°F)
<b>BK</b>	Vinyl	Color – Black	Temperature Range (+32°F to +125°F)



### Fitting Group (1-3)

Part Number	Thread Size	A (Hex)	B	C	D	Thru Hole
VCF1-1032M	10-32 Male	.312	.510	.167	.320	.097
VCF2-1032M	10-32 Male	.312	.593	.222	.308	.097
VCF3-1032M	10-32 Male	.312	.659	.234	.365	.097

### HOW TO ORDER:

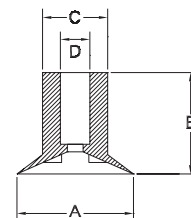
*Cup only* — part number and material, i.e., VCN-37A

*Fitting only* — part number, i.e., VCF2-1032M

*Cup & Fitting* — cup number, material with fitting group number only and the thread size, i.e., VCN-37A-2-1032M

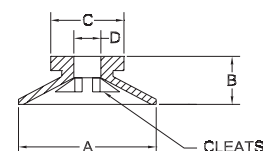
# CUPS — FLAT

Part Number	Approx. Area-in <sup>2</sup>	A O.D.	B Height	C	D Thru Hole	Cleats	Material	Fitting Group
VCN-92C	0.22	1.05	0.83	0.44	.25	No	CL	NF
VCN-92C1	0.22	1.05	0.83	0.44	.25	Yes	CL	NF
VCN-103B	0.23	1.09	0.28	0.47	.19	No	V	NF
VCN-11	0.26	1.14	1.03	0.53	.19	No	CL	NF
VCN-59	0.31	1.25	0.95	0.74	.42	No	CL	NF
VCN-34	0.33	1.29	0.97	0.69	.31	No	CL	NF
VCN-33	0.33	1.30	0.90	0.62	.25	No	Y	NF
VCN-99	0.34	1.32	0.72	0.60	.25	Yes	CL	NF
VCN-120	0.34	1.32	1.08	0.62	.36	Yes	Y	NF
VCN-58	0.41	1.45	0.75	0.66	.37	No	Y	NF
VCN-17	0.42	1.46	0.99	0.62	.32	Yes	CL	NF
VCN-44	0.43	1.48	0.58	0.58	.25	No	CL	NF
VCN-32	0.44	1.50	0.65	0.76	.37	No	V	NF
VCN-5A	0.44	1.50	1.00	0.99	.43	No	Y	NF
VCN-5	0.47	1.55	1.05	1.00	.51	No	CL	NF
VCN-97	0.48	1.57	0.52	0.75	.37	Yes	CL	NF
VCN-16	0.57	1.70	0.97	0.98	.38	No	CL	NF
VCN-96	0.57	1.71	0.57	0.73	.34	No	V	NF
VCN-14	0.58	1.72	0.66	1.50	.49	No	V	NF
VCN-10	0.58	1.72	1.02	0.98	.43	No	CL	NF
VCN-8	0.59	1.73	0.64	1.15	.53	No	V	NF
VCN-3	0.73	1.93	0.87	1.16	.50	No	CL	NF
VCN-9	0.73	1.93	0.71	1.35	.54	No	V	NF
VCN-46	0.75	1.95	0.62	1.52	.25	No	CL	NF
VCN-128	0.98	2.23	1.17	0.75	.38	Yes	V	NF
VCN-26	1.13	2.40	0.79	1.35	.52	No	V	NF
VCN-7	1.67	2.92	1.36	1.17	.50	Yes	V	NF



Note 1: "NF" = thru-hole only, no fitting.

Part Number	Approx. Area-in <sup>2</sup>	A O.D.	B Height	C	D Thru Hole	Cleats	Material	Fitting Group
VCN-82	.10	0.73	.47	.56	.18	No	V	NF
VCN-30A	.12	0.79	.25	.47	.16	No	V	NF
VCN-30B	.13	0.80	.25	.46	.21	No	V	NF
VCN-106B	.14	0.83	.20	-	.25	No	V	NF
VCN-108	.14	0.83	.39	.60	.13	No	O	NF
VCN-107B	.19	0.98	.33	.58	.23	Yes	V	NF
VCN-30C	.20	1.01	.33	.45	.24	No	V	NF
VCN-43B	.20	1.02	.33	.58	.23	No	V	NF
VCN-107G	.20	1.02	.37	.58	.25	Yes	G	NF
VCN-107C	.20	1.02	.37	.58	.25	Yes	C	NF
VCN-114	.38	1.40	.30	.65	.33	Yes	V	NF

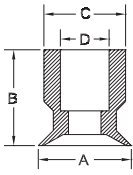


Note 1: "NF" = thru-hole only, no fitting.

**Material:**

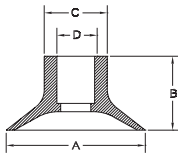
<b>V</b>	Vinyl	Color – Blue	Temperature Range (+32°F to +125°F)
<b>CL</b>	Vinyl	Color – Clear	Temperature Range (+32°F to +125°F)
<b>G</b>	Vinyl	Color – Green	Temperature Range (+32°F to +125°F)
<b>O</b>	Vinyl	Color – Orange	Temperature Range (+32°F to +125°F)
<b>Y</b>	Vinyl	Color – Yellow	Temperature Range (+32°F to +125°F)
<b>BK</b>	Vinyl	Color – Black	Temperature Range (+32°F to +125°F)

## CUPS — FLAT



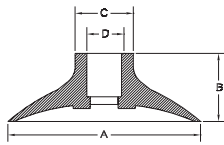
Part Number	Approx. Area-in <sup>2</sup>	A O.D.	B Height	C	D Thru Hole	Cleats	Material	Fitting Group
VCC-F-020	.008	.20	.36	.32	.16	No	N/S	7
VCC-F-039	.029	.39	.43	.37	.20	No	N/S	7

**Material:** N Nitrile Color – Black Temperature Range (-40°F to +275°F)  
 S Silicone Color – Translucent Temperature Range (-60°F to +450°F)



Part Number	Approx. Area-in <sup>2</sup>	A O.D.	B Height	C	D Thru Hole	Cleats	Material	Fitting Group
VCC-F-059	.068	0.59	.44	.36	.20	No	N/S	7
VCC-F-079	.120	0.79	.45	.33	.20	No	N/S	7
VCC-F-100	.190	1.00	.50	.38	.20	No	N/S	7

**Material:** N Nitrile Color – Black Temperature Range (-40°F to +275°F)  
 S Silicone Color – Translucent Temperature Range (-60°F to +450°F)



Part Number	Approx. Area-in <sup>2</sup>	A O.D.	B Height	C	D Thru Hole	Cleats	Material	Fitting Group
VCC-F-120	0.28	1.20	0.51	0.35	.31	Yes	N/S	7
VCC-F-142	0.40	1.42	0.76	0.63	.31	Yes	N/S	8
VCC-F-160	0.50	1.60	0.79	0.63	.31	Yes	N/S	8
VCC-F-205	0.83	2.05	0.79	0.63	.31	Yes	N/S	8
VCC-F-236	1.09	2.36	0.87	0.69	.31	Yes	N/S	8
VCC-F-295	1.71	2.95	1.26	1.02	.47	Yes	N/S	9
VCC-F-374	2.75	3.74	1.50	1.02	.47	Yes	N/S	9

**Material:** N Nitrile Color – Black Temperature Range (-40°F to +275°F)  
 S Silicone Color – Translucent Temperature Range (-60°F to +450°F)

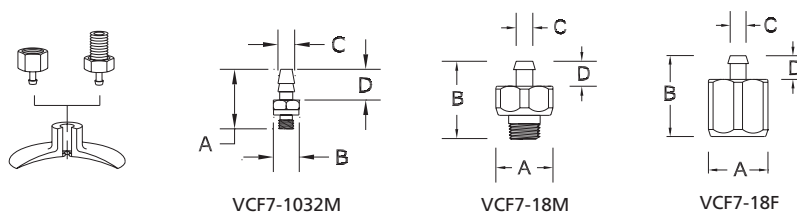
**HOW TO ORDER:**

*Cup only* — part number and material, i.e., VCC-B-043-N

*Fitting only* — part number, i.e., VCF7-18M

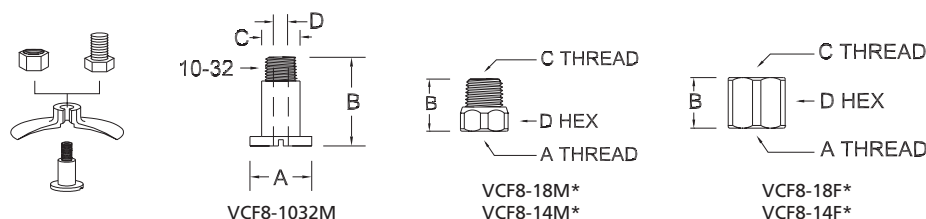
*Cup & Fitting* — cup number, material with fitting group number only and the thread size, i.e., VCC-B-043-N-7-18M

**For Fitting Groups 8 and 9 — Fitting part number and male stud should be ordered as two separate line items.**



**Fitting Group 7 - Mounting Configuration and Fitting Sizes**

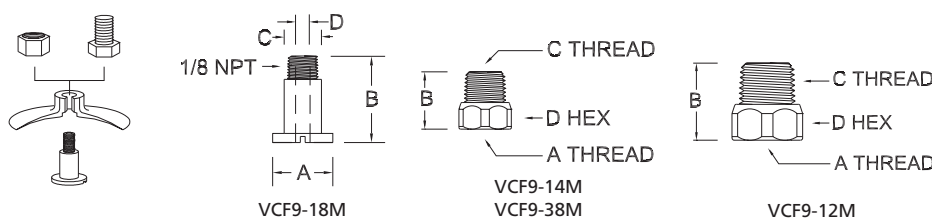
Part Number	Thread Size	A	B	C	D	Thru Hole
VCF7-1032M	10-32 Male	.660	.314	.235	.365	.095
VCF7-18M	1/8 NPTM w/10-32 Female	.500	.790	.255	.260	.160
VCF7-18F	1/8 NPTF	.500	.760	.255	.260	.160



**Fitting Group 8 - Mounting Configuration and Fitting Sizes**

Part Number	Thread Size	A	B	C	D/Hex	Thru Hole
VCF8-1032M stud	10-32 Male	.550	.755	.332	N/A	.110
VCF8-18M*	1/8 NPTM w/10-32 Female	10-32 F	.531	1/8 NPTM	.437	.165
VCF8-14M*	1/4 NPTM	10-32 F	.650	1/4 NPTM	.562	.200
VCF8-18F*	1/8 NPTF	10-32 F	.520	1/8 NPTF	.500	.200
VCF8-14F*	1/4 NPTF	10-32 F	.650	1/4 NPTF	.625	.200

\*Must be ordered with the VCF8-1032M if mounting to a vacuum cup. Please order as separate line item.

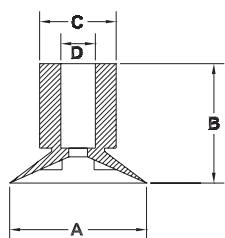


**Fitting Group 9 - Mounting Configuration and Fitting Sizes**

Part Number	Thread Size	A	B	C	D/HEX	Thru Hole
VCF9-18M stud	1/8 NPTM	.750	1.150	.490	N/A	.235
VCF9-14M*	1/4 NPTM	1/8 F	0.750	1/4 NPTM	.562	.329
VCF9-38M*	3/8 NPTM	1/8 F	0.750	3/8 NPTM	.687	.328
VCF9-12M*	1/2 NPTM	1/8 F	1.000	1/2 NPTM	.875	.328

\*Must be ordered with the VCF9-18M if mounting to a Vacuum cup. Please order as separate line item.

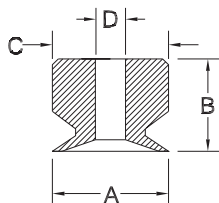
## CUPS — FLAT



Part Number	Approx. Area-in <sup>2</sup>	A O.D.	B Height	C	D Thru Hole	Cleats	Material	Fitting Group
VCN-104B	0.04	0.43	0.55	0.33	.15	No	V	2
VCN-116B	0.08	0.65	0.75	0.44	.25	No	V	NF
VCN-65Y	0.10	0.70	0.54	0.38	.16	No	Y	2
VCN-53Y	0.10	0.71	0.58	0.38	.16	No	Y	2
VCN-23	0.20	1.00	1.00	0.65	.38	No	Y	NF
VCN-47	0.25	1.13	1.10	0.54	.19	No	V	NF
VCN-1A	0.36	1.35	1.00	1.02	.50	No	Y	NF
VCN-105	0.44	1.50	1.04	0.85	.56	No	V	NF
VCN-4	1.23	2.50	1.95	0.99	.63	Yes	V	NF
VCN-51	1.23	2.50	2.00	1.10	.60	Yes	Y	NF

**Note 1:** "NF" = thru-hole only, no fitting.

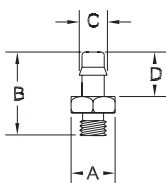
<b>Material:</b>	<b>V</b>	Vinyl	Color – Blue	Temperature Range (+32°F to +125°F)
	<b>CL</b>	Vinyl	Color – Clear	Temperature Range (+32°F to +125°F)
	<b>G</b>	Vinyl	Color – Green	Temperature Range (+32°F to +125°F)
	<b>O</b>	Vinyl	Color – Orange	Temperature Range (+32°F to +125°F)
	<b>Y</b>	Vinyl	Color – Yellow	Temperature Range (+32°F to +125°F)
	<b>BK</b>	Vinyl	Color – Black	Temperature Range (+32°F to +125°F)



Part Number	Approx. Area-in <sup>2</sup>	A O.D.	B Height	C	D Thru Hole	Cleats	Material	Fitting Group
VCN-66	0.07	.60	.49	.58	.24	No	V	3
VCN-66C	0.09	.68	.47	.60	.17	No	CL	3
VCN-22GN	0.13	.80	.60	.57	.18	No	G	NF
VCN-22C	0.13	.80	.60	.57	.25	No	CL	NF
VCN-22O	0.13	.80	.60	.57	.25	No	O	NF
VCN-22Y	0.13	.80	.60	.57	.25	No	Y	NF
VCN-22W	0.13	.80	.60	.57	.25	No	V	NF

**Note 1:** "NF" = thru-hole only, no fitting.

<b>Material:</b>	<b>V</b>	Vinyl	Color – Blue	Temperature Range (+32°F to +125°F)
	<b>CL</b>	Vinyl	Color – Clear	Temperature Range (+32°F to +125°F)
	<b>G</b>	Vinyl	Color – Green	Temperature Range (+32°F to +125°F)
	<b>O</b>	Vinyl	Color – Orange	Temperature Range (+32°F to +125°F)
	<b>Y</b>	Vinyl	Color – Yellow	Temperature Range (+32°F to +125°F)
	<b>BK</b>	Vinyl	Color – Black	Temperature Range (+32°F to +125°F)



### Fitting Group (1-3)

Part Number	Thread Size	A (Hex)	B	C	D	Thru Hole
VCF1-1032M	10-32 Male	.312	.510	.167	.320	.097
VCF2-1032M	10-32 Male	.312	.593	.222	.308	.097
VCF3-1032M	10-32 Male	.312	.659	.234	.365	.097

### HOW TO ORDER:

*Cup only* — part number and material, i.e., VCN 66-V

*Fitting only* — part number, i.e., VCF3-1032M

*Cup & Fitting* — cup number, material with fitting group number only and the thread size, i.e., VCN 66-V-3-1032M