



Models 75, 76 & 77

GO Switch Models 75 and 76 are the same as models 73 and 74, only slightly longer with more thread surface and therefore more adjustability. Model 77 is the longest and largest option in the 70 series family.

Features:

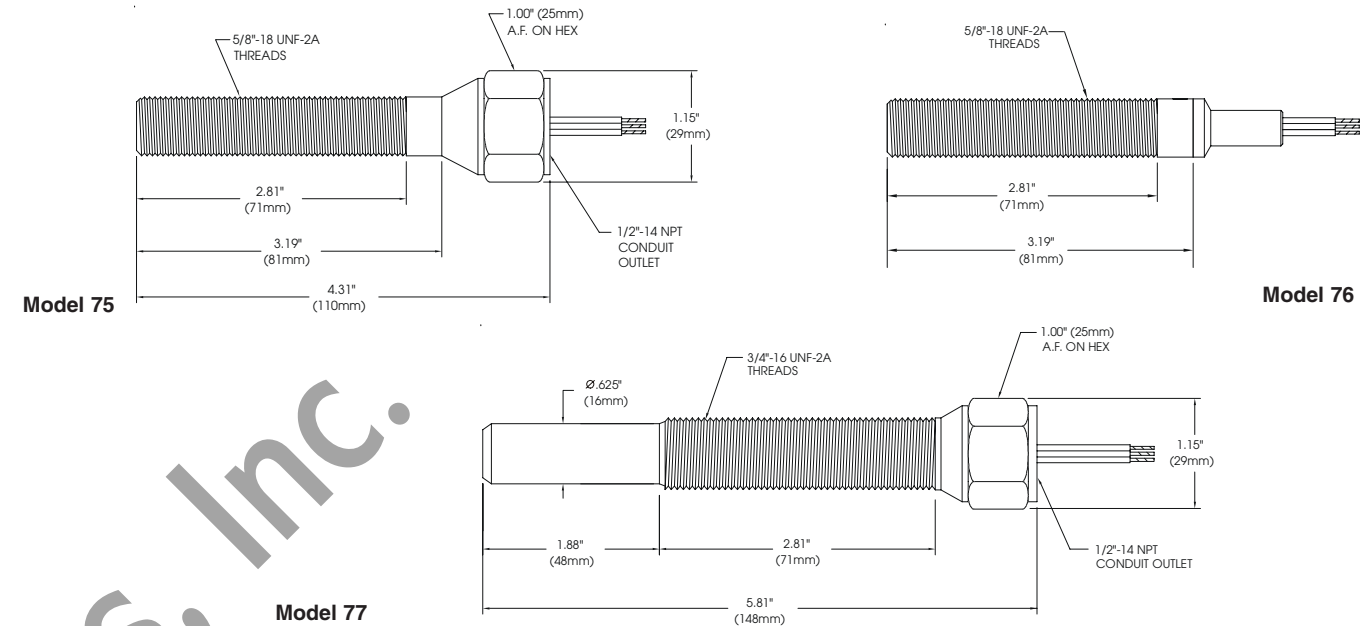
- SPDT 4A contacts
- Intrinsically Safe
- 40° to 221°F operating temperature

Options:

- Suitable for Zone 0, 1, or 2 explosion proof
- 40° to 400°F high temperature
- Quick disconnect connector
- Underwater capabilities
- English or Metric threads

Round Switches

Leverless Limit Switches



Model	Contact Form	Sensing Range	Outlet Position	Enclosure Material	Approvals	Wiring Options																																																				
<p>Repeatability: .002" (.05mm) typical</p> <p>Response Time: 8 milliseconds</p> <p>Differential: Approx. .020" (.51 mm)</p> <p>Operating Temperature: -40° to 221°F (-40° to 105°C). HiTemp to 400°F (204°C)</p> <p>75 Model 75 5/8" (16 mm) dia. x 4 5/16" (110 mm) long with 5/8"-18 UNF x 2 13/16" (71 mm) threads and 1/2" NPT conduit hub</p> <p>75M Model 75 M18 x 1 external metric thread</p> <p>76 Model 76 5/8" (16 mm) dia. x 3 3/16" (81 mm) long with 5/8"-18 UNF x 2 13/16" (71 mm) threads. No conduit hub</p> <p>76M Model 76 M18 x 1 external metric thread</p> <p>77 Model 77 3/4" (19 mm) dia. x 5 13/16" (148 mm) long with 3/4"-16 UNF x 2 13/16" (71mm) threads.</p> <p>Ordering Guide Fill in the boxes to create your 'ordering number.'</p>	<p>Contact Material: Palladium silver with sawtooth surface configuration</p> <p>Form: SPDT, Form C</p> <p>atings: Resistive</p> <table border="1"> <thead> <tr> <th colspan="2">AC</th> <th colspan="2">DC</th> </tr> <tr> <th>Volts</th> <th>Amps</th> <th>Volts</th> <th>Amps</th> </tr> </thead> <tbody> <tr> <td>120</td> <td>4</td> <td>24</td> <td>3</td> </tr> <tr> <td>240</td> <td>2</td> <td>48</td> <td>1.25</td> </tr> <tr> <td>480</td> <td>*</td> <td>125</td> <td>0.5</td> </tr> <tr> <td></td> <td></td> <td>250</td> <td>0.5</td> </tr> </tbody> </table> <p>1 Single Pole Double Throw (Form C)</p> <p>Form C - SPDT</p>	AC		DC		Volts	Amps	Volts	Amps	120	4	24	3	240	2	48	1.25	480	*	125	0.5			250	0.5	<p>Target Material: Ferrous steel</p> <p>Sensing Range: .100" (2.5 mm) end sensing (2,000 PSI) .072" (1.8 mm) end sensing (5,000 PSI) .060" (1.5 mm) end sensing (10,000 PSI)</p> <p>Sensing Range with Target Magnet: up to .35" (9 mm)</p> <p>3 Standard sensing - approx. .100" (3 mm) end sensing (must be 2 or 6)</p> <p>4 HiPressure sensing - approx. .072" (2 mm) end sensing (Enclosure must be 3 and Approvals must be 2, 7, 8, or 9)</p> <p>5 HiPressure sensing - approx. .060" (1.5 mm) end sensing (Enclosure must be 4 and Approvals must be 2, 7, or 8)</p> <p>Extended Sensing Range with External Target Magnets (See Accessories for External Target Magnets)</p> <table border="1"> <thead> <tr> <th>Magnet</th> <th>Sensing</th> <th>Differential</th> </tr> </thead> <tbody> <tr> <td>AMP3</td> <td>.20"</td> <td>.25"</td> </tr> <tr> <td>AMS4</td> <td>.35"</td> <td>.15"</td> </tr> <tr> <td>AMS7</td> <td>.20"</td> <td>.05"</td> </tr> </tbody> </table>	Magnet	Sensing	Differential	AMP3	.20"	.25"	AMS4	.35"	.15"	AMS7	.20"	.05"	<p>Conduit Outlet: 1/2" NPT</p> <p>2 Side entry with Teflon insulated leads (Model 76) (Approval must be 2 or 8) (Wiring must be F)</p> <p>5 Bottom of enclosure</p> <div style="border: 1px solid black; padding: 5px; width: fit-content;"> <p>Need Accessories?</p> <p>See pp. 93-104 for:</p> <ul style="list-style-type: none"> Range Extending Target Magnets Mounting Brackets Connectors and more! </div>	<p>2 303 stainless steel (rated 2,000 PSI) (Sensing must be 3)</p> <p>3 HiPressure - 303 stainless steel (rated 5,000 PSI) (Sensing must be 4) (Approval must be 2, 7, 8, or 9)</p> <p>4 HiPressure - 303 stainless steel (rated 10,000 PSI) (Sensing must be 5) (Approval must be 2, 7, 8, or 9)</p> <p>6 316 stainless steel (rated 2,000 PSI)</p>	<p></p> <p>2 High temperature to 400°F (204°C) with Teflon™ insulated leads (Wiring must be F)</p> <p>3 UL listed explosion proof for CI I, Div 1 & 2; Grps A,B,C,D; CI II, Div 1 & 2, Grps E-G; CI III (Model 75 & 77) (Wiring must be A, B, or F) (Lead seal req'd within 18")</p> <p>4 CSA certified explosion proof for CI I, Div 1; Grps A,B,C,D; CI II, Div 1; Grps E-G; CI III (Model 75) (Lead seal req'd within 18")</p> <p>6 CSA certified CI I, Div 2; Grps A,B,C,D; CI II, Div 2; Grps E-G; CI III (Model 75 & 77) (Wiring must be A, B, or F) (Lead seal req'd within 18")</p> <p>7 CSA certified General Purpose</p> <p>8 UL listed General Purpose</p> <p>9 CENELEC: EExdIIC T6 Zone 1. (EN 50 014 & EN 50 018, BASEEFA Certificate Ex89C1233X) (Model 75 & 77) (Wiring must be A or B)</p> <p>A SAA: Ex s IIC T6 IP65; CI I Zone 1 & 2; EX S IIC T6 IP65; CI I Zone 0; DIP CI II (Intrinsically safe with entity approved barrier. Install per NEC Article 501.) (Wiring must be A) (Model 75)</p> <p>B SAA: High Temp 350°F (176°C); EX S IIC T3 IP65; CI I Zone 1 & 2; EX S IIC T3 IP65; CI I Zone 0; DIP CI II (Intrinsically safe with entity approved barrier. Install per NEC Article 501.) (Wiring must be F) (Model 75)</p>	<p>Lead Wires 18 Gauge (.110" dia) potted-in PVC insulated AWM / TEW stranded lead wires, rated at 221°F (105°C) 600V UL / CSA listed</p> <p>A2 36" (914 mm)</p> <p>A3 72" (1829 mm)</p> <p>A4 144" (3658 mm)</p> <p>A___ Lengths greater than 144" (Specify length in feet (e.g. A150 = 150 ft. of leads))</p> <p>Cable 18 Gauge (.250" dia.) potted-in PVC cable, rated at 176°F (80°C) 300V, UL / CSA listed</p> <p>B2 36" (914 mm)</p> <p>B3 72" (1829 mm)</p> <p>B4 144" (3658 mm)</p> <p>B___ Lengths greater than 144" (Specify length in feet (e.g. B150 = 150 ft. of cable))</p> <p>Water Resistant 18 Gauge (.250" dia.) PVC cable rated at 176°F (80°C) 300V with water-resistant squeeze connector. (Model 76) UL / CSA listed</p> <p>C2 36" (914 mm)</p> <p>C3 72" (1829 mm)</p> <p>C4 144" (3658 mm)</p> <p>C___ Lengths greater than 144" (Specify length in feet (e.g. C150 = 150 ft. of cable))</p> <p>Quick Disconnect Male Quick Disconnect only, potted-in connector. (CSA requires a case ground) (Approvals must be 7 or 8) Refer to pp. 93-104 for mating cable assemblies and Aura Light Adapters.</p> <table border="1"> <thead> <tr> <th colspan="2">Mini-change®</th> <th colspan="2">Micro-change®</th> </tr> </thead> <tbody> <tr> <td>DCA</td> <td>3 - pin Mini-change® type</td> <td>DBA</td> <td>3 - pin Micro-change® type</td> </tr> <tr> <td>DCD</td> <td>4 - pin Mini-change® type</td> <td>DBD</td> <td>4 - pin Micro-change® type</td> </tr> <tr> <td>DCG</td> <td>5 - pin Mini-change® type</td> <td>DBG</td> <td>5 - pin Micro-change® type</td> </tr> </tbody> </table> <p>SubSea Underwater Connector (Models 75 & 77)</p> <p>3DD 3 pin, certified not to leak underwater</p> <p>4DD 4 pin, certified not to leak underwater</p> <p>3DE 3 pin right-angle, certified not to leak underwater</p> <p>4DE 4 pin right-angle, certified not to leak underwater</p> <p>HiTemp Leads 18 gauge (.070" dia. potted-in Teflon™ insulated leads rated at 482°F (250°C) 600V UL / CSA listed (Approval must be 2, 3, 4, 6, 7, 8 or B)</p> <p>F2 36" (914 mm)</p> <p>F3 72" (1829 mm)</p> <p>F4 144" (3658 mm)</p> <p>F___ Lengths greater than 144" (Specify length in feet (e.g. F150 = 150 ft. of leads))</p>	Mini-change®		Micro-change®		DCA	3 - pin Mini-change® type	DBA	3 - pin Micro-change® type	DCD	4 - pin Mini-change® type	DBD	4 - pin Micro-change® type	DCG	5 - pin Mini-change® type	DBG	5 - pin Micro-change® type
AC		DC																																																								
Volts	Amps	Volts	Amps																																																							
120	4	24	3																																																							
240	2	48	1.25																																																							
480	*	125	0.5																																																							
		250	0.5																																																							
Magnet	Sensing	Differential																																																								
AMP3	.20"	.25"																																																								
AMS4	.35"	.15"																																																								
AMS7	.20"	.05"																																																								
Mini-change®		Micro-change®																																																								
DCA	3 - pin Mini-change® type	DBA	3 - pin Micro-change® type																																																							
DCD	4 - pin Mini-change® type	DBD	4 - pin Micro-change® type																																																							
DCG	5 - pin Mini-change® type	DBG	5 - pin Micro-change® type																																																							
Model	Contact Form	Sensing Range	Outlet Position	Enclosure Material	Approvals	Wiring Options																																																				