

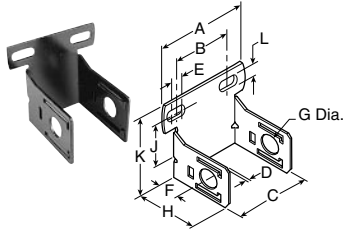
D



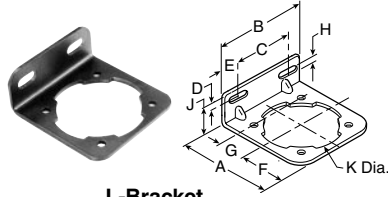
# Modular Accessories and Repair Kits

- Filter Accessories ..... 2
- Regulator Accessories ..... 4
- Lubricator Accessories ..... 6
- Filter / Regulator Accessories ..... 8
- 08 Series Accessories ..... 11
- 12 Series Accessories ..... 12
- 18 / 28 Series Accessories ..... 13
- 39 Series Accessories ..... 14

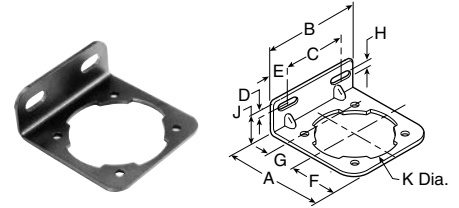
# Accessories – Filters



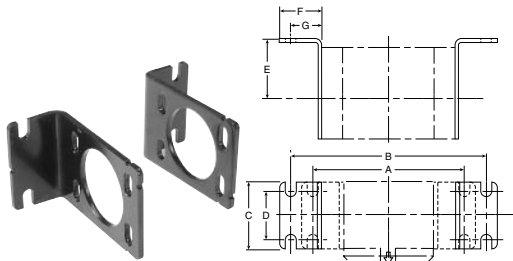
**C-Bracket  
GPA-97-010**



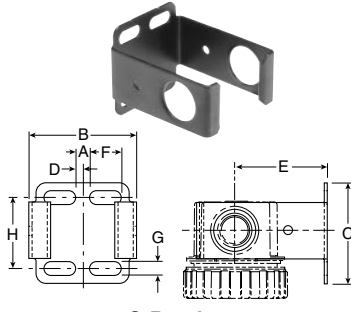
**L-Bracket  
GPA-96-604**



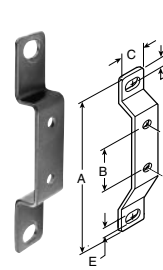
**L-Bracket  
GPA-96-605**



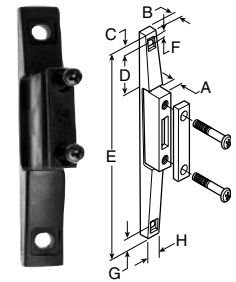
**L-Bracket  
P3NKA00MW**



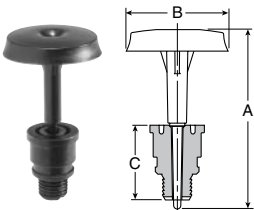
**C-Bracket  
GPA-96-300**



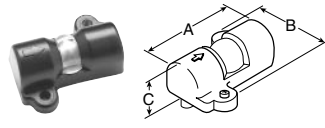
**T-Bracket  
GPA-96-602**



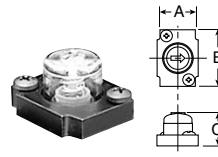
**T-Bracket  
GPA-96-737  
w/ Joiner**



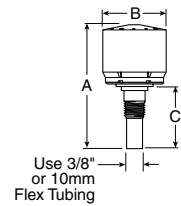
**Piston Drain  
GRP-96-716**



**Differential Pressure  
Indicator  
DP8-01-000**



**Differential Pressure  
Indicator  
FRP-96-300**



**Automatic Drain  
GRP-95-973, GRP-95-981**

**Dimensions** Inches (mm)

Accessories	Part Number	Used On	A	B	C	D	E	F	G	H	J	K	L
Piston Drain	GRP-96-716	F08, M08, B08	1.70 (43)	.94 (24)	.68 (17)	—	—	—	—	—	—	—	—
C-Bracket	GPA-97-010	F08, M08, B08	2.67 (68)	1.73 (44)	1.57 (40)	.07 (1.8)	.39 (9.9)	1.57 (40)	.78 (20)	2.32 (59)	1.37 (35)	2.41 (61)	.26 (6.6)
	GPA-96-300	F12, M12	.28 (7)	2.12 (54)	2.00 (51)	.14 (4)	1.85 (47)	.63 (16)	.28 (7)	1.41 (36)	—	—	—
L-Bracket	GPA-96-604	F18, M18, B18	2.84 (72)	2.74 (69.5)	1.66 (42)	.38 (9.6)	.54 (14)	1.26 (32)	.88 (22)	.28 (7.1)	1.10 (28)	2.25 (57)	—
	GPA-96-605	F28, M28, B28	3.44 (87)	3.00 (76)	1.88 (48)	.38 (9.6)	.56 (14)	1.49 (38)	1.10 (28)	.28 (7.1)	1.10 (28)	2.66 (67.5)	—
	P3NKA00MW	F39, B39	6.22 (158)	8.19 (208)	2.75 (70)	1.97 (50)	2.36 (60)	1.77 (45)	1.30 (33)	—	—	—	—
T-Bracket	GPA-96-602	F18, F28, M18, M28	3.75 (95)	1.25 (32)	.76 (19.3)	.25 (6.3)	.28 (7.1)	—	—	—	—	—	—
T-Bracket w/ Joiner	GPA-96-737	F08, M08	.45 (11)	.28 (7.1)	.40 (10)	.67 (17)	3.97 (100.8)	.22 (5.6)	.40 (10)	.64 (16)	—	—	—
Replacement Differential Pressure Indicator	DP8-01-000	F18, F28, M18, M28	2.12 (54)	1.85 (47)	.84 (21)	—	—	—	—	—	—	—	—
	FRP-96-300	F12, M12	1.25 (31.8)	1.50 (38.1)	.94 (23.8)	—	—	—	—	—	—	—	—
Automatic Drains, Nitrile	GRP-95-973	F18, M18, B18	2.86 (72.6)	.38 (9.6)	1.42 (36)	—	—	—	—	—	—	—	—
Automatic Drains, Fluorocarbon	GRP-95-981	F28, M28, B28	—	—	—	—	—	—	—	—	—	—	—

# Filter Replacement Repair Kits

 = "Most Popular"



Model	Plastic Bowl / Bowl Guard Manual Drain	Metal Bowl / Sight Gauge Manual Drain	Plastic Bowl / Bowl Guard Automatic Drain	Metal Bowl / Sight Gauge Automatic Drain	Plastic Bowl / Bowl Guard No Drain
<b>Particulate Filter</b>					
<b>F08</b>	GRP-96-712	GRP-96-714*	N/A	N/A	N/A
<b>F12</b>	GRP-96-347 w/ GRP-96-345	GRP-96-349	GRP-96-351** w/ GRP-96-345	GRP-96-352**	N/A
<b>F18</b>	GRP-96-634	GRP-96-636	GRP-96-635	GRP-96-637	GRP-96-638
<b>F28</b>	GRP-96-642	GRP-96-644	GRP-96-643	GRP-96-645	GRP-96-652
<b>F39</b>	N/A	P3NKA00BSM	N/A	P3NKA00BSA	N/A

\* Metal bowl does not have sight gauge.

\*\* 12 Series has Piston Style Drain.

Coalescing Filter					
<b>M08</b>	GRP-96-712	GRP-96-714*	N/A	N/A	N/A
<b>M12</b>	GRP-96-347 w/ GRP-96-345	GRP-96-349	GRP-96-351** w/ GRP-96-345	GRP-96-352**	N/A
<b>M18</b>	GRP-96-634	GRP-96-636	GRP-96-635	GRP-96-637	GRP-96-638
<b>M28</b>	GRP-96-642	GRP-96-644	GRP-96-643	GRP-96-645	GRP-96-652
<b>M39</b>	N/A	P3NKA00BSM	N/A	P3NKA00BSA	N/A

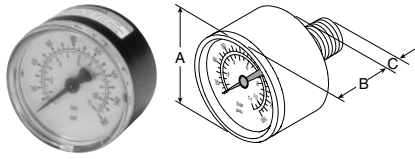
\* Metal bowl does not have sight gauge.

\*\* 12 Series has Piston Style Drain.

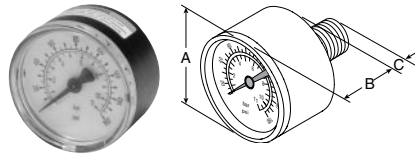
Model	Type A Filter Element 5 Micron	Bowl O-ring (Nitrile)	Bowl O-ring (Fluorocarbon)	Filter Retainer Element Baffle	Manual Drain
<b>Particulate Filter</b>					
<b>F08</b>	FRP-96-729	GRP-96-710	GRP-96-711	N/A	N/A
<b>F12</b>	GRP-96-344	N/A	N/A	N/A	GRP-96-340
<b>F18</b>	FRP-96-639	GRP-96-640	GRP-96-754	FRP-96-641	GRP-96-685
<b>F28</b>	FRP-96-653	GRP-96-654	GRP-96-755	FRP-96-283	GRP-96-685
<b>F39</b>	P3NKA00ESE	N/A	N/A	N/A	PS512
<b>Coalescing Filter</b>					
<b>M08</b>	N/A	GRP-96-710	GRP-96-711	N/A	N/A
<b>M12</b>	N/A	N/A	N/A	N/A	GRP-96-340
<b>M18</b>	N/A	GRP-96-640	GRP-96-754	N/A	GRP-96-685
<b>M28</b>	N/A	GRP-96-654	GRP-96-755	N/A	GRP-96-685
<b>M30</b>	N/A	N/A	N/A	N/A	PS-512
<b>Coalescing Filter</b>	<b>Type-B Coalescing Element 0.5 Micron</b>	<b>Type C Coalescing Element 0.01 Micron</b>		<b>Type D Adsorption Element Activated Carbon</b>	
<b>M08</b>	MSP-96-732	MTP-96-649		MXP-96-222	
<b>M12</b>	MRP-96-301	MRP-96-300		FRP-96-301*	
<b>M18</b>	MSP-96-647	MTP-96-646		MXP-96-650	
<b>M28</b>	MSP-96-649	MTP-96-648		MXP-96-651	
<b>M39</b>	P3NKA00ES9	P3NKA00ESC		N/A	

\* For F12 Series Filters.

# Accessories – Regulators



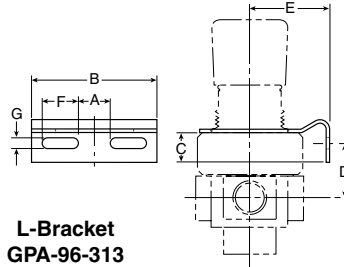
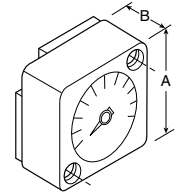
Gauge with 1/4 Port  
12 / 18 / 28 / 39 Series



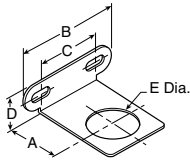
Gauge with 1/8 Port  
08 Series



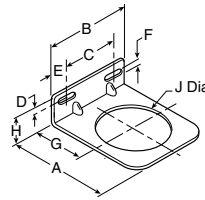
Flush Mount Gauge  
08 Series



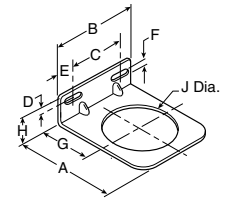
L-Bracket  
GPA-96-313



L-Bracket  
GRP-96-739



L-Bracket  
GRP-96-606



L-Bracket  
GRP-96-607

## Dimensions Inches (mm)

Accessories		Used On	A	B	C	D	E	F	G	H	J
L-Bracket	GRP-96-739	R08, R09	1.57 (40)	2.68 (68)	1.74 (44)	.97 (25)	1.19 (30)	—	—	—	—
	GPA-96-313	R12	.84 (21)	2.59 (66)	.49 (12)	1.02 (26)	1.85 (47)	.61 (15)	.28 (7)	—	—
	GPA-96-606	R18, R19	2.74 (69.5)	2.74 (69.5)	1.66 (42)	.43 (11)	.54 (14)	.28 (7.1)	1.57 (40)	1.00 (25)	2.0 (51)
	GPA-96-607	R28	3.33 (84.5)	3.00 (76)	1.88 (48)	.43 (11)	.56 (14)	2.40 (61)	1.94 (49)	1.00 (25)	2.40 (61)
<b>18 / 28 Series Gauges, 1/4 Port, CBM</b>											
K4515N14030 (0 to 30 PSIG)		R12, R18, R28									
K4515N14060 (0 to 60 PSIG)		R12, R18, R28									
K4515N14160 (0 to 160 PSIG)		R12, R18, R28									
K4515N14300 (0 to 300 PSIG)		R12, R18, R28	1.64 (41.6)	1.09 (27.6)	.80 (20)	—	—	—	—	—	—
K4515G14030 (0 to 2.0 bar)		R18, R28									
K4515G14060 (0 to 4.2 bar)		R18, R28									
K4515G14160 (0 to 11 bar)		R18, R28									
K4515G14290 (0 to 20 bar)		R18, R28									
<b>08 Series Gauges, 1/8 Port, CBM</b>											
K4515N18160 (0 to 160 PSIG (0 to 11 bar)		R08	1.64 (41.6)	1.09 (27.6)	.80 (20)	—	—	—	—	—	—
K4515N18060 (0 to 60 PSIG) (0 to 4,1 bar)		R08									
<b>Flush Mount Series Gauges</b>											
K4511SCR150 (0 to 150 PSIG)		R08	1.06 (26.9)	.63 (16)	—	—	—	—	—	—	—
K4511SCR060 (0 to 60 PSIG)		R08									
K4511SCR11B (0 to 11 bar)		R08									

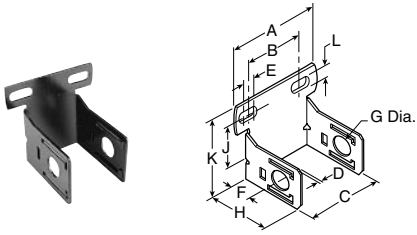
# Regulator Replacement Kits

 = "Most Popular"

Model	Self-relieving Diaphragm (Nitrile)	Non-relieving Diaphragm (Nitrile)	Valve Assembly Kit	Tamper Resistant Ring	Plastic Panel Nut	Aluminum Panel Nut
<b>R08, R09</b>	GRP-96-725	GRP-96-726	RRP-96-727	RPA-96-735	RPA-96-734	RPA-96-733
<b>R12</b>	RRP-96-306	RRP-96-307	N/A	N/A	N/A	GPA-96-314
<b>R18</b>	RRP-96-656	RRP-96-657	RRP-96-658	RRP-96-671	RRP-96-675	RRP-96-673
<b>R19</b>	RRP-96-760	RRP-96-761	RRP-96-658	RRP-96-671	RRP-96-675	RRP-96-673
<b>R28</b>	RRP-96-986	RRP-96-987	RRP-96-049	RRP-96-672	RRP-96-676	RRP-96-674
Model	Main Regulating Spring 0-30 PSIG	Main Regulating Spring 0-60 PSIG	Main Regulating Spring 0-125 PSIG	Main Regulating Spring 0-250 PSIG		
<b>R08, R09</b>	GRP-95-111	GRP-96-718	GRP-96-717	N/A		
<b>R12</b>	RRP-96-303	RRP-96-302	RRP-96-301	N/A		
<b>R18, R19</b>	RRP-96-659	RRP-96-660	RRP-96-661	RRP-96-662		
<b>R28</b>	RRP-96-163	RRP-96-164	RRP-96-165	RRP-96-166		
<b>R39</b>	N/A	C10A1304	CA101308	CA101317		

D

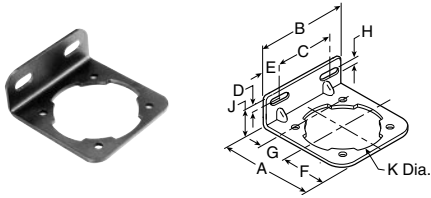
# Accessories – Lubricators



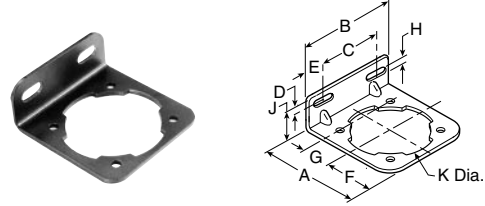
**C-Bracket  
GPA-97-010**



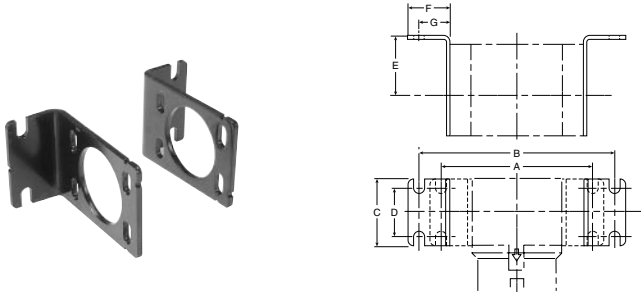
**C-Bracket  
GPA-96-300**



**L-Bracket  
GPA-96-604**



**L-Bracket  
GPA-96-605**



**L-Bracket  
P3NKA00MW**

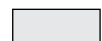


**F442 Oil**  
**F442001** - 1 Quart Bottle  
**F442002** - 1 Gallon  
**F442005** - 4 Gallon Case

## Dimensions Inches (mm)

Accessories	Part Number	Used On	A	B	C	D	E	F	G	H	J	K	L
C-Bracket	GPA-97-010	L08	2.67 (68)	1.73 (44)	1.57 (40)	.07 (1.8)	.39 (9.9)	1.57 (40)	.78 (20)	2.32 (59)	1.37 (35)	2.41 (61)	.26 (6.6)
	GPA-96-300	L12	.28 (7)	2.12 (54)	2.00 (51)	.14 (4)	1.85 (47)	.63 (16)	.28 (7)	1.41 (36)	—	—	—
L-Bracket	GPA-96-604	L18	2.84 (72)	2.74 (69.5)	1.66 (42)	.38 (9.6)	.54 (14)	1.26 (32)	.88 (22)	.28 (7.1)	1.10 (28)	2.25 (57)	—
	GPA-96-605	L28	3.44 (87)	3.00 (76)	1.88 (48)	.38 (9.6)	.56 (14)	1.49 (38)	1.10 (28)	.28 (7.1)	1.10 (28)	2.66 (67.5)	—
	P3NKA00MW	L39	6.22 (158)	8.19 (208)	2.75 (70)	1.97 (50)	2.36 (60)	1.77 (45)	1.30 (33)	—	—	—	—
Oil	F442001 – 1 Quart Bottle		—	—	—	—	—	—	—	—	—	—	—
	F442002 – 1 Gallon		—	—	—	—	—	—	—	—	—	—	—
	F442005 – 4 Gallon Case		—	—	—	—	—	—	—	—	—	—	—

# Lubricator Replacement Kits

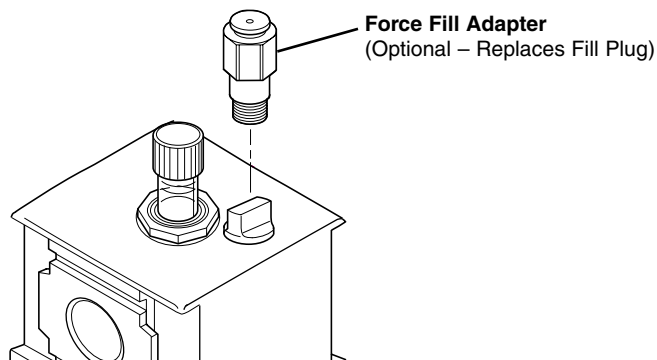
 = "Most Popular"



Model	Plastic Bowl / Bowl Guard / Manual Drain	Manual Drain	Metal Bowl / Sight Gauge / Manual Drain
L08	LRP-96-736	N/A	GRP-96-714*
L12	LRP-96-308** w/ GRP-96-345	GRP-96-340	LRP-96-306
L18	LRP-96-701	GRP-96-685	GRP-96-636
L28	LRP-96-702	GRP-96-685	GRP-96-644
L39	N/A	PS512	P3NKA00BSM

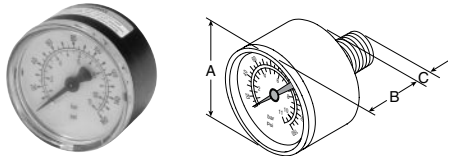
\*Metal bowl does not have sight gauge. \*\* No Drain.

Model	Siphon Tube Assembly	Bowl O-ring (Nitrile)	Bowl O-ring (Fluorocarbon)	Force Fill Adapter	Fill Plug Kit (Fill Plug & O-ring)	Sight Dome Assembly
L08	LRP-96-731	GRP-96-710	GRP-96-711	N/A	LRP-96-730	LRP-96-301
L12	N/A	N/A	N/A	LRP-96-302	N/A	N/A
L18	LRP-96-677	GRP-96-640	GRP-96-754	LRP-96-704	LRP-96-679	LRP-96-310
L28	LRP-96-781	GRP-96-654	GRP-96-755	LRP-96-704	LRP-96-679	LRP-96-310
L39	N/A	N/A	N/A	P3NKA00PK	P3NKA00PL	PS740



**D**

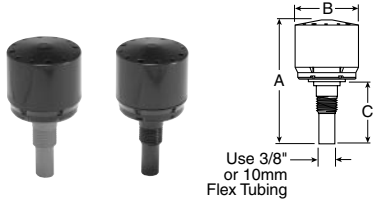
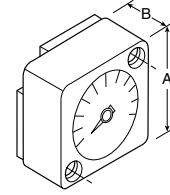
# Accessories – Filter / Regulators



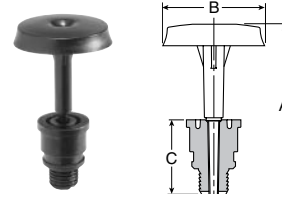
**Gauge with 1/4 Port**  
12 / 18 / 28 / 39 Series



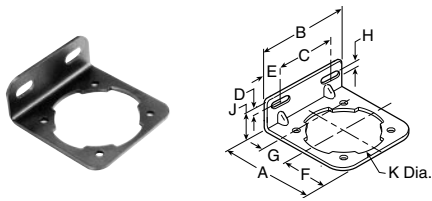
**Flush Mount Gauge**  
08 Series



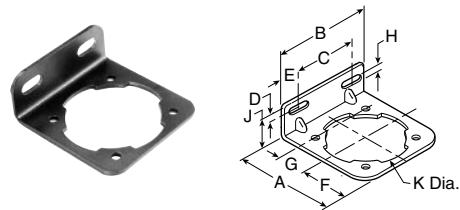
**Automatic Drain**  
GRP-95-973, GRP-95-981



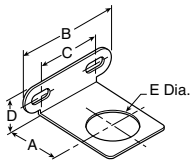
**Piston Drain**  
GRP-96-716



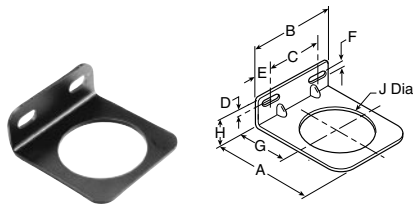
**Body L-Bracket**  
GPA-96-604



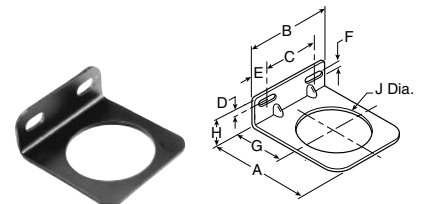
**Body L-Bracket**  
GPA-96-605



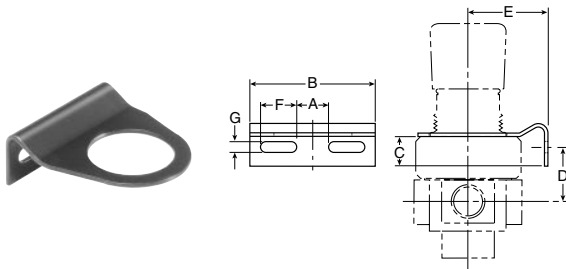
**L-Bracket**  
GRP-96-739



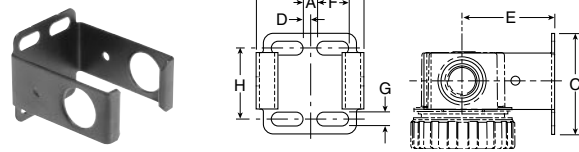
**Bonnet L-Bracket**  
GRP-96-606



**Bonnet L-Bracket**  
GRP-96-607



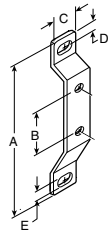
**L-Bracket**  
GPA-96-313



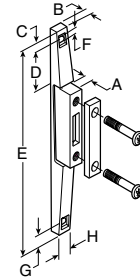
**C-Bracket**  
GPA-96-300



# Accessories – Filter / Regulators



**T-Bracket  
GPA-96-602**



**T-Bracket  
GPA-96-737  
w/ Joiner**

## Dimensions Inches (mm)

Accessories	Part Number	Used On	A	B	C	D	E	F	G	H	J	K	L
<b>L-Bracket</b>	<b>GRP-96-739</b>	B08	1.57 (40)	2.68 (68)	1.74 (44)	.97 (25)	1.19 (30)	—	—	—	—	—	—
	<b>GPA-96-313</b>	R12	.84 (21)	2.59 (66)	.49 (12)	1.02 (26)	1.85 (47)	.61 (15)	.28 (7)	—	—	—	—
	<b>GPA-96-606</b>	B18	2.74 (69.5)	2.74 (69.5)	1.66 (42)	.43 (11)	.54 (14)	.28 (7.1)	1.57 (40)	1.00 (25)	2.0 (51)	—	—
	<b>GPA-96-607</b>	B28	3.33 (84.5)	3.00 (76)	1.88 (48)	.43 (11)	.56 (14)	2.40 (61)	1.94 (49)	1.00 (25)	2.40 (61)	—	—
<b>C-Bracket</b>	<b>GPA-97-010</b>	B08	2.67 (68)	1.73 (44)	1.57 (40)	.07 (1.8)	.39 (9.9)	1.57 (40)	.78 (20)	2.32 (59)	1.37 (35)	2.41 (61)	.26 (6.6)
	<b>GPA-96-300</b>	B12	.28 (7)	2.12 (54)	2.00 (51)	.14 (4)	1.85 (47)	.63 (16)	.28 (7)	1.41 (36)	—	—	—
	<b>GPA-96-604</b>	B18	2.84 (72)	2.74 (69.5)	1.66 (42)	.38 (9.6)	.54 (14)	1.26 (32)	.88 (22)	.28 (7.1)	1.10 (28)	2.25 (57)	—
	<b>GPA-96-605</b>	B28	3.44 (87)	3.00 (76)	1.88 (48)	.38 (9.6)	.56 (14)	1.49 (38)	1.10 (28)	.28 (7.1)	1.10 (28)	2.66 (67.5)	—
<b>T-Bracket</b>	<b>GPA-96-602</b>	B18, B28	3.75 (95)	1.25 (32)	.76 (19.3)	.25 (6.3)	.28 (7.1)	—	—	—	—	—	—
<b>T-Bracket w/ Joiner</b>	<b>GPA-96-737</b>	B08	.45 (11)	.28 (7.1)	.40 (10)	.67 (17)	3.97 (100.8)	.22 (5.6)	.40 (10)	.64 (16)	—	—	—
<b>Automatic Drains, Nitrile</b>	<b>GRP-95-973</b>	B18, B28	2.93 (74.4)	1.47 (37.3)	1.17 (29.7)	—	—	—	—	—	—	—	—
<b>Automatic Drains, Fluorocarbon</b>	<b>GRP-95-981</b>	B18, B28	2.93 (74.4)	1.47 (37.3)	1.17 (29.7)	—	—	—	—	—	—	—	—
<b>Piston Drain</b>	<b>GRP-96-716</b>	B08	1.70 (43)	.94 (24)	.68 (17)	—	—	—	—	—	—	—	—
<b>Flush Mount Series Gauges</b>													
	<b>K4511SCR150</b> (0 to 150 PSIG)	B08	1.06 (26.9)	.63 (16)	—	—	—	—	—	—	—	—	—
	<b>K4511SCR060</b> (0 to 60 PSIG)	B08	1.06 (26.9)	.63 (16)	—	—	—	—	—	—	—	—	—
	<b>K4511SCR11B</b> (0 to 11 bar)	B08	1.06 (26.9)	.63 (16)	—	—	—	—	—	—	—	—	—
<b>18 / 28 Series Gauges, 1/4 Port</b>													
	<b>K4515N14060</b> (0 to 60 PSIG)	B12, B18, B28	1.64 (41.6)	1.09 (27.6)	.80 (20)	—	—	—	—	—	—	—	—
	<b>K4515N14160</b> (0 to 160 PSIG)	B12, B18, B28	1.64 (41.6)	1.09 (27.6)	.80 (20)	—	—	—	—	—	—	—	—
	<b>K4515N14300</b> (0 to 300 PSIG)	B12, B18, B28	1.64 (41.6)	1.09 (27.6)	.80 (20)	—	—	—	—	—	—	—	—
	<b>K4515G14030</b> (0 to 2,0 bar)	B12, B18, B28	1.64 (41.6)	1.09 (27.6)	.80 (20)	—	—	—	—	—	—	—	—
	<b>K4515G14160</b> (0 to 11 bar)	B18, B28	1.64 (41.6)	1.09 (27.6)	.80 (20)	—	—	—	—	—	—	—	—
	<b>K4515G14290</b> (0 to 20 bar)	B18, B28	1.64 (41.6)	1.09 (27.6)	.80 (20)	—	—	—	—	—	—	—	—

**D**

# Filter / Regulators Replacement Repair Kits

 = "Most Popular"



Model	Plastic Bowl / Bowl Guard Manual Drain	Metal Bowl / Sight Gauge Manual Drain	Plastic Bowl / Bowl Guard Automatic Drain	Metal Bowl / Sight Gauge Automatic Drain	Plastic Bowl / Bowl Guard No Drain
<b>B08</b>	GRP-96-712	GRP-96-714*	N/A	N/A	N/A
<b>B12</b>	GRP-96-347 w/ GRP-96-345	GRP-96-349	GRP-96-351** w/ GRP-96-345	GRP-96-352**	N/A
<b>B18</b>	GRP-96-634	GRP-96-636	GRP-96-635	GRP-96-637	GRP-96-638
<b>B28</b>	GRP-96-642	GRP-96-644	GRP-96-643	GRP-96-645	GRP-96-652
<b>B39</b>	N/A	P3NKA00BSM	N/A	P3NKA00BSA	N/A

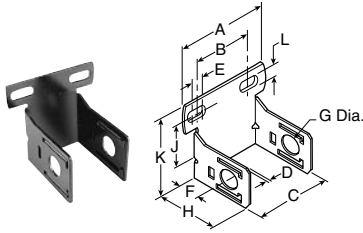
\* Metal bowl does not have sight gauge.

\*\* 12 Series has Piston Style Drain.

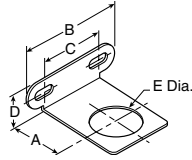
Model	Filter Element 5 Micron	Bowl O-ring (Nitrile)	Bowl O-ring (Fluorocarbon)	Filter Retainer Element Baffle	Manual Drain
<b>B08</b>	FRP-96-729	GRP-96-710	GRP-96-711	N/A	N/A
<b>B12</b>	GRP-96-344	N/A	N/A	N/A	GRP-96-340
<b>B18</b>	FRP-96-639	GRP-96-640	GRP-96-754	FRP-96-641	GRP-96-685
<b>B28</b>	FRP-96-653	GRP-96-654	GRP-96-755	FRP-96-283	GRP-96-685
<b>B39</b>	P3NKA00ESE	N/A	N/A	N/A	PS512
Model	Self-relieving Diaphragm (Nitrile)	Non-relieving Diaphragm (Nitrile)	Valve Assembly Kit	Valve Spring	Service Kit (Relieving)
<b>B08</b>	GRP-96-725	GRP-96-726	RRP-96-727	RRP-96-728	N/A
<b>B12</b>	RRP-96-306	RRP-96-307	N/A	N/A	RRP-96-306
<b>B18</b>	RRP-96-656	RRP-96-657	RRP-96-658	N/A	N/A
<b>B28</b>	RRP-96-986	RRP-96-987	RRP-96-049	N/A	N/A
Model	Main Regulating Spring 0-30 PSIG	Main Regulating Spring 0-60 PSIG	Main Regulating Spring 0-125 PSIG	Main Regulating Spring 0-250 PSIG	
<b>B08</b>	GRP-95-111	GRP-96-718	GRP-96-717	N/A	
<b>B12</b>	RRP-96-303	RRR-96-302	RRP-96-301	RRP-96-304 (200 PSIG)	
<b>B18</b>	RRP-96-659	RRP-96-660	RRP-96-661	RRP-96-662	
<b>B28</b>	RRP-96-163	RRP-96-164	RRP-96-165	RRP-96-166	
<b>B39</b>	N/A	C10A1304	CA101308	CA101317	
Tamper Resistant Model	Aluminum Resistant Ring	Plastic Panel Nut	Manual Panel Nut		
<b>B08</b>	RPA-95-735	RPA-96-733	RPA-96-734		
<b>B12</b>	N/A	N/A	GPA-96-314		
<b>B18</b>	RRP-96-671	RRP-96-673	RRP-96-675		
<b>B28</b>	RRP-96-672	RRP-96-674	RRP-96-676		

# Accessories – “08” Series

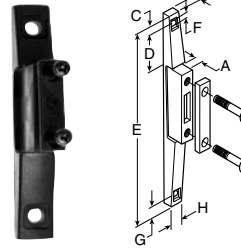
 = “Most Popular”



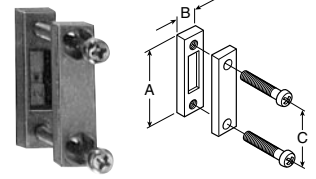
**C-Bracket**  
GPA-97-010



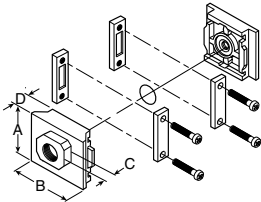
**L-Bracket**  
GRP-96-739



**T-Bracket**  
GPA-96-737  
w/ Joiner



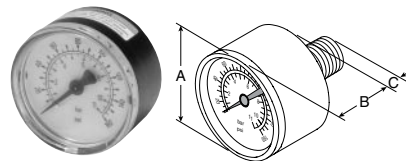
**Joiner Set**  
GPA-96-738  
(O-ring not shown)



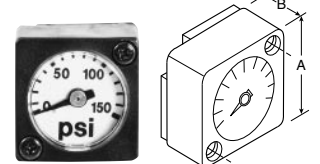
**End Block Set**



**End Block Set**  
w/ T-Bracket



**Gauge with 1/8 Port**  
08 Series



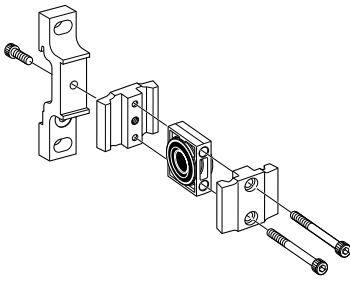
**Flush Mount Gauge**  
08 Series

## Dimensions Inches (mm)

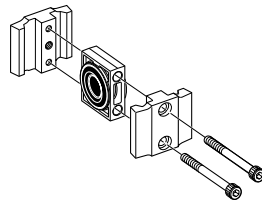
Accessories	Part Number	Pipe Size	A	B	C	D	E	F	G	H	J	K
<b>C-Bracket</b>	<b>GPA-97-010</b>	—	2.67 (68)	1.73 (44)	1.57 (40)	.07 (1.8)	.39 (9.9)	1.57 (40)	.78 (20)	2.32 (59)	1.37 (35)	2.41 (61)
<b>L-Bracket</b>	<b>GRP-96-739</b>	—	1.57 (40)	2.68 (68)	1.74 (44)	.97 (25)	1.19 (30)	—	—	—	—	—
<b>T-Bracket</b>	<b>GPA-96-737</b>	—	.45 (11)	.28 (7.1)	.40 (10)	.67 (17)	3.97 (100.8)	.22 (5.6)	.40 (10)	.64 (16)	—	—
<b>Joiner Set</b>	<b>GPA-96-738</b>	—	1.42 (36)	.39 (9.9)	.98 (26)	—	—	—	—	—	—	—
<b>End Block Set</b>	<b>GPA-97-018</b>	1/8 NPT	1.42 (36)	1.57 (40)	.53 (13.5)	.31 (8)	—	—	—	—	—	—
	<b>GPA-97-019</b>	1/4 NPT										
	<b>GPA-97-020</b>	3/8 NPT										
	<b>GPA-97-066</b>	G 1/8										
	<b>GPA-97-067</b>	G 1/4										
	<b>GPA-97-065</b>	G 3/8										
<b>GPA-97-025</b>	1/8 NPT											
<b>End Block Set</b> <b>With T-Brackets</b>	<b>GPA-97-026</b>	1/4 NPT	1.42 (36)	1.57 (40)	.53 (13.5)	.31 (8)	—	—	—	—	—	—
	<b>GPA-97-027</b>	3/8 NPT										
	<b>GPA-97-068</b>	G 1/8										
	<b>GPA-97-069</b>	G 1/4										
	<b>GPA-97-070</b>	G 3/8										
<b>Flush Mount Series Gauges</b>			1.06 (26.9)	.63 (16)	—	—	—	—	—	—	—	—
<b>K4511SCR150</b> (0 to 150 PSIG)												
<b>K4511SCR060</b> (0 to 60 PSIG)												
<b>K4511SCR11B</b> (0 to 11 bar)			—	—	—	—	—	—	—	—	—	—
<b>08 Series Gauges</b>			1.64 (41.6)	1.09 (27.6)	.80 (20)	—	—	—	—	—	—	—
<b>K4515N18160</b> (0 to 160 PSIG, 0 to 11 bar)												
<b>K4515N18060</b> (0 to 60 PSIG, 0 to 4.1 bar)			1/8 CBM	—	—	—	—	—	—	—	—	—



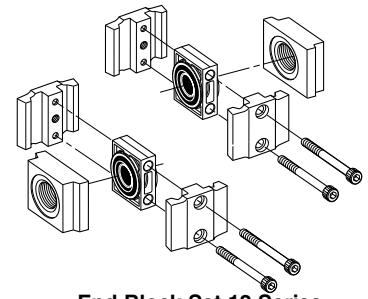
# Accessories – “12” Series



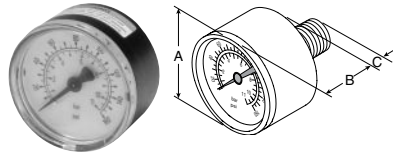
**T-Bracket with Joiner Set**  
GPA-96-312



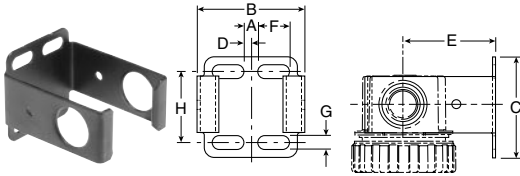
**Joiner Set**  
GPA-96-310



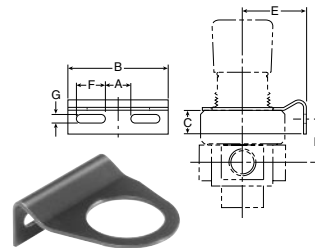
**End Block Set 12 Series**



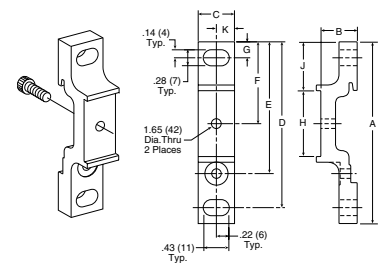
**Gauge with 1/4 Inch Port**  
12 Series



**C-Bracket**  
GPA-96-300



**L-Bracket**  
GPA-96-313



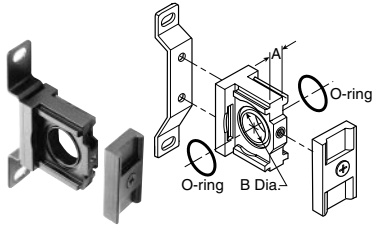
**T-Bracket**  
GPA-96-311

## Dimensions Inches (mm)

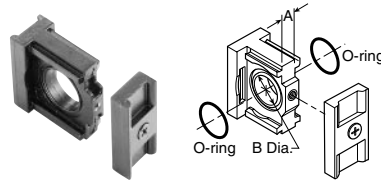
Accessories	Part Number	Pipe Size	A	B	C	D	E	F	G	H	J	K
T-Bracket	GPA-96-311	—	3.15 (80)	0.63 (16)	0.63 (16)	2.87 (73)	2.28 (56)	1.41 (36)	0.28 (7)	1.14 (29)	0.85 (22)	0.31 (8)
T-Bracket w/ Joiner Set	GPA-96-312	—	—	—	—	—	—	—	—	—	—	—
C-Bracket F12, M12, L12	GPA-96-300	—	.28 (7)	2.12 (54)	2.00 (51)	.14 (4)	1.85 (47)	.63 (16)	.28 (7)	1.41 (36)	—	—
L-Bracket R12, B12	GPA-96-313	—	.84 (21)	2.59 (66)	.49 (12)	1.02 (26)	1.85 (47)	.61 (15)	.28 (7)	—	—	—
Joiner Set	GPA-96-310	—	—	—	—	—	—	—	—	—	—	—
End Block Set (Contains 2 End Blocks)	GPA-96-301	1/8 NPT	—	—	—	—	—	—	—	—	—	—
	GPA-96-302	1/4 NPT	—	—	—	—	—	—	—	—	—	—
	GPA-96-303	3/8 NPT	—	—	—	—	—	—	—	—	—	—
	GPA-96-304	G1/8	—	—	—	—	—	—	—	—	—	—
	GPA-96-305	G 1/4	—	—	—	—	—	—	—	—	—	—
	GPA-96-306	G 3/8	—	—	—	—	—	—	—	—	—	—
	GPA-96-307	Rc 1/8	—	—	—	—	—	—	—	—	—	—
	GPA-96-308	Rc 1/4	—	—	—	—	—	—	—	—	—	—
GRP-96-309	Rc 3/8	—	—	—	—	—	—	—	—	—	—	
<b>12 Series Gauges</b>												
K4515N14030 (0 to 30 PSIG)	1/4 Port, CBM	1.64 (41.6)	1.09 (27.6)	.80 (20)	—	—	—	—	—	—	—	—
K4515N14060 (0 to 60 PSIG)	1/4 Port, CBM	—	—	—	—	—	—	—	—	—	—	—
K4515N14160 (0 to 160 PSIG)	1/4 Port, CBM	—	—	—	—	—	—	—	—	—	—	—

# Accessories – “18 / 28” Series

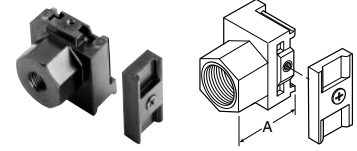
 = “Most Popular”



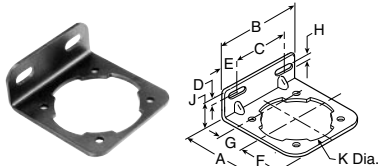
T-Bracket w/ Joiner Set GPA-96-603



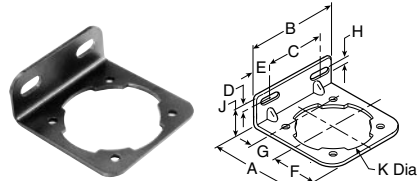
Joiner Set GPA-96-601



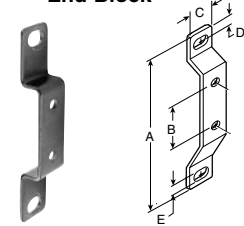
End Block



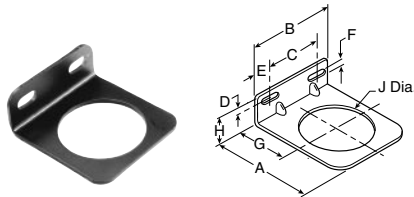
Body L-Bracket GPA-96-604



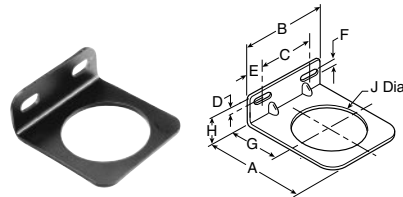
Body L-Bracket GPA-96-605



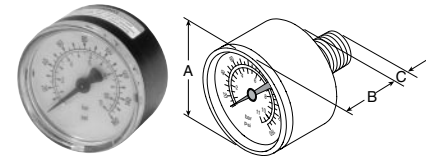
T-Bracket GPA-96-602



Bonnet L-Bracket GRP-96-606



Bonnet L-Bracket GRP-96-607



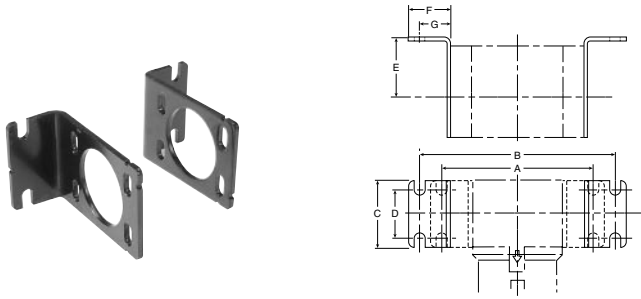
Gauge 18 / 28 Series

## Dimensions Inches (mm)

Accessories	Part Number	Pipe Size	A	B	C	D	E	F	G	H	J	K
T-Bracket	GPA-96-602	—	3.75 (95)	1.25 (32)	.76 (19.3)	.25 (6.3)	.28 (7.1)	—	—	—	—	—
T-Bracket w/ Joiner Set	GPA-96-603	—	.35 (8.9)	.87 (22.1)	—	—	—	—	—	—	—	—
L-Bracket, 18 Series	GPA-96-604	—	2.84 (72)	2.74 (69.5)	1.66 (42)	.38 (9.6)	.54 (14)	1.26 (32)	.88 (22)	.28 (7.1)	1.10 (28)	2.25 (57)
L-Bracket, 28 Series	GPA-96-605	—	3.44 (87)	3.00 (76)	1.88 (48)	.38 (9.6)	.56 (14)	1.49 (38)	1.10 (28)	.28 (7.1)	1.10 (28)	2.66 (67.5)
L-Bracket, 18 Series	GPA-96-606	—	2.74 (69.5)	2.74 (69.5)	1.66 (42)	.43 (11)	.54 (14)	.28 (7.1)	1.57 (40)	1.00 (25)	2.0 (51)	—
L-Bracket, 28 Series	GPA-96-607	—	3.33 (84.5)	3.00 (76)	1.88 (48)	.43 (11)	.56 (14)	2.40 (61)	1.94 (49)	1.00 (25)	2.40 (61)	—
Joiner Set	GPA-96-601	—	.35 (8.9)	.87 (22.1)	—	—	—	—	—	—	—	—
End Block	GPA-96-610	1/4 NPT	1.59 (40)	—	—	—	—	—	—	—	—	—
	GPA-96-611	3/8 NPT										
	GPA-96-612	1/2 NPT										
	GPA-96-613	3/4 NPT										
	GPA-96-620	G 1/4										
	GPA-96-621	G 3/8										
	GPA-96-622	G 1/2										
GPA-96-623	G 3/4											
18 / 28 Series Gauges			1.64 (41.6)	1.09 (27.6)	.80 (20)	—	—	—	—	—	—	—
K4515N14030 (0 to 30 PSIG)		1/4 Port, CBM										
K4515N14060 (0 to 60 PSIG)		1/4 Port, CBM										
K4515N14160 (0 to 160 PSIG)		1/4 Port, CBM										
K4515N14300 (0 to 300 PSIG)		1/4 Port, CBM										
K4515G14030 (0 to 2.0 bar)		1/4 Port, CBM										
K4515G14060 (0 to 4.2 bar)		1/4 Port, CBM										
K4515G14160 (0 to 11 bar)		1/4 Port, CBM										
K4515G14290 (0 to 20 bar)		1/4 Port, CBM										

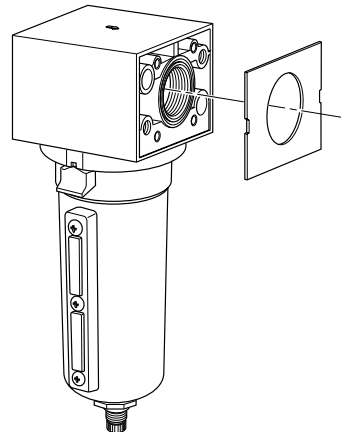
**D**

# Accessories – “39” Series

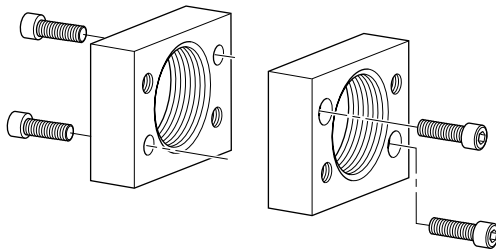


**L-Bracket  
P3NKA00MW**

For 1-1/2” BSPP Port Block with E02 fitting application, use **Mounting Bracket Kit P3NKA00BMW**



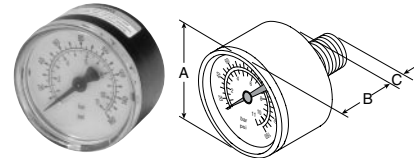
**Replacement Body Covers C-Bracket  
P3NKA00PM**



**Port Block Kits  
39 Series**

Port Block Kits allow units to be installed or removed as modular components.

Each Kit includes all the necessary pieces to make two port connections.



**Gauge with 1/4 Port  
39 Series**

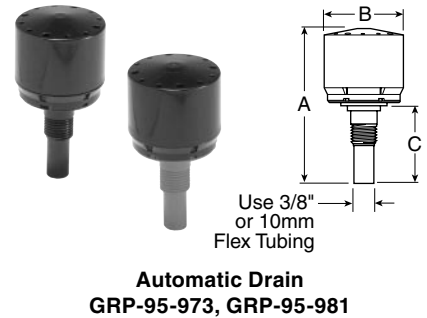
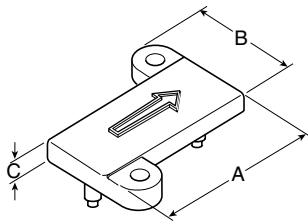
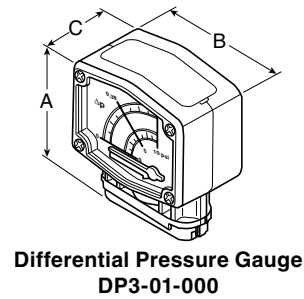
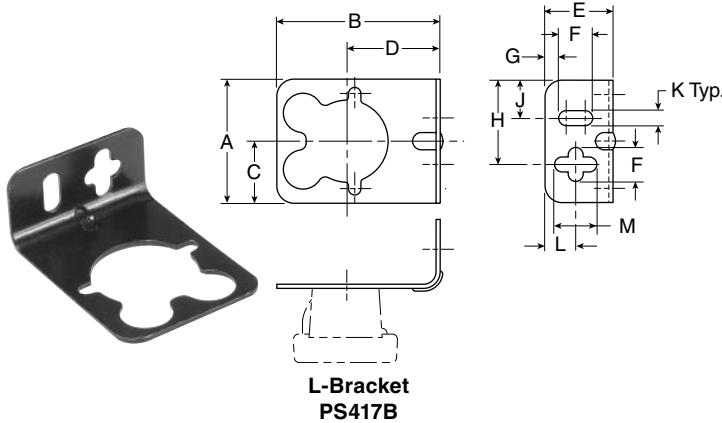
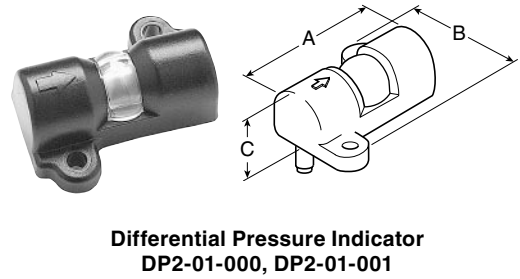
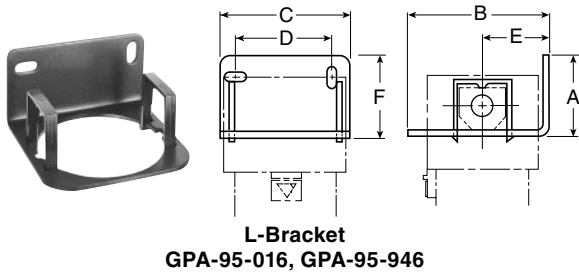
## Dimensions Inches (mm)

Accessories	Part Number	Pipe Size	A	B	C	D	E	F	G
L-Bracket	P3NKA00MW	—	6.22 (158)	8.19 (208)	2.75 (70)	1.97 (50)	2.36 (60)	1.77 (45)	1.30 (33)
Replacement Body Covers	P3NKA00PM	—	Each Kit contains two covers. All units are shipped with body covers.						
Port Block Kits	P3NKB96CP	3/4 Inch NPT	Individual Filters, Individual Regulators and 2-Piece Filter and Regulator Assemblies						
	P3NKB98CP	1 Inch NPT							
	P3NKB16CP	3/4 Inch BSPP							
	P3NKB18CP	1 Inch BSPP							
	P3NKB96CL	3/4 Inch NPT	2 and 3 Piece Combinations including a Lubricator (FR/L & FRL), Individual Lubricators, Individual Coalescing Filters and 2-Piece Filter and Coalescer Assemblies						
	P3NKB98CL	1 Inch NPT							
	P3NKB16CL	3/4 Inch BSPP							
	P3NKB18CL	1 Inch BSPP							
<b>39 Series Gauges</b>									
K4520N14030 (0 to 30 PSIG)		1/4 Port, CBM	1.96 (49.8)	1.08 (27.4)	.91 (23)	—	—	—	—
K4520N14060 (0 to 60 PSIG)		1/4 Port, CBM							
K4520N14160 (0 to 160 PSIG)		1/4 Port, CBM							



**Filter Accessories ..... 2**  
**Regulator Accessories ..... 5**  
**Lubricator Accessories ..... 7**  
**Filter / Regulator Accessories ..... 9**  
**Modular 16 / 26 Series Accessories .... 10**

# Accessories – Filters



## Dimensions Inches (mm)

Accessories	Part Number	Used On	A	B	C	D	E	F	G	H	J	K	L	M
L-Bracket	PS417B	F03, M03	2.12 (53)	3.62 (91)	3.40 (83)	2.53 (64)	1.88 (47)	0.50 (13)	0.20 (5)	1.24 (31)	0.56 (14)	0.22 (6)	0.45 (11)	0.62 (16)
	GPA-95-016	F16, M16	1.80 (46)	2.37 (60)	0.90 (23)	1.35 (34)	1.00 (25)	—	—	—	—	—	—	—
	GPA-95-946	F26, M26	—	—	—	—	—	—	—	—	—	—	—	—
Differential Pressure Indicator	DP2-01-000	M16, M21, M26, M30, M31, M32	2.12 (54)	1.85 (47)	0.84 (21)	—	—	—	—	—	—	—	—	—
	DP2-01-001	F35, F36, F37, F43, M35, M36, M37, M43, M45	—	—	—	—	—	—	—	—	—	—	—	—
Cap, Differential Pressure Indicator (Pressures over 150 PSIG, 10.3 bar)	GRP-95-020	M16, M21, M26, M30, M31, M32	2.12 (54)	1.85 (47)	0.25 (6.3)	—	—	—	—	—	—	—	—	—
	GRP-95-022	F35, F36, F37, F43, M35, M36, M37, M43, M45	—	—	—	—	—	—	—	—	—	—	—	—
Differential Pressure Gauge	DP3-01-000	M32, M42	3.0 (75.9)	2.55 (65)	1.54 (39)	—	—	—	—	—	—	—	—	—
Automatic Drains, Nitrile	GRP-95-973	F16, F26, F30, F35, F36, F43	2.93 (74.4)	1.47 (37.3)	1.17 (29.7)	—	—	—	—	—	—	—	—	—
Automatic Drains, Fluorocarbon	GRP-95-981	F16, F26, F30, F35, F36, F43	—	—	—	—	—	—	—	—	—	—	—	—



# Filter Replacement Bowl Kits


= "Most Popular"



Model	Plastic Bowl / Manual Drain	Plastic Bowl / Bowl Guard Manual Drain	Metal Bowl / Manual Drain	Metal Bowl / Sight Gauge Manual Drain	Plastic Bowl / Bowl Guard Automatic Drain	Metal Bowl / Automatic Drain
<b>Particulate Filters</b>						
F03	PS404	—	PS447B	—	—	—
F16	FRP-95-017	FRP-95-014	FRP-95-178	GRP-95-133	FRP-95-015	FRP-95-950
F26	GRP-95-929	GRP-95-935	GRP-95-930	GRP-95-931	GRP-95-948	GRP-95-960
F30	FRP-96-315	FRP-95-832	FRP-95-593	GRP-95-676	FRP-95-775	GRP-95-970
F34	N/A	GRP-95-902	N/A	N/A	N/A	N/A
<b>Coalescing Filters</b>						
M03	PS404	—	PS447B	—	—	—
M16	FRP-95-017	FRP-95-014	FRP-95-178	GRP-95-133	FRP-95-015	FRP-95-950
M21	MRP-96-415	FRP-95-722	N/A	N/A	N/A	N/A
M26	GRP-95-929	GRP-95-935	GRP-95-930	GRP-95-931	GRP-95-948	GRP-95-960
M30	FRP-96-315	FRP-95-832	FRP-95-593	GRP-95-676	FRP-95-775	GRP-95-970
M31	MRP-95-940	MRP-95-938	MRP-95-939	N/A	MRP-95-941	N/A

**F**

# Filter Replacement Element Kits

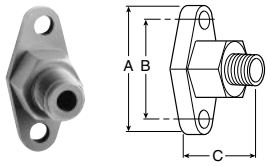
 = "Most Popular"



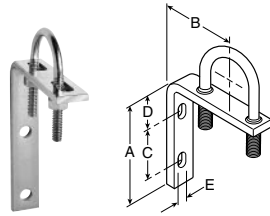
Model	Type A 5 Micron	Type B1 1 Micron	Type B 0.5 Micron	Type C 0.01 Micron	Type D Oil Vapor Removing
<b>Particulate Filters</b>					
F01	FRP-95-199	—	—	—	—
F03	PS403	—	—	—	—
F16	FRP-95-160	—	—	—	—
F26	FRP-95-115	—	—	—	—
F30	FRP-95-209	—	—	—	—
F34	FRP-95-209	—	—	—	—
F35	FRP-95-505	—	—	—	—
F36	FRP-95-506	—	—	—	—
F37	FRP-95-507	—	—	—	—
F43	FRP-95-508	—	—	—	—
F50	FRP-95-212	—	—	—	—
F51	FRP-95-213	—	—	—	—
F52	FRP-95-212 (3 kits)	—	—	—	—
F53	FRP-95-213 (3 kits)	—	—	—	—
<b>Coalescing Filters</b>					
M03	—	PS456	—	PS446	PS452
M16	—	—	MSP-95-988	MTP-95-548	MXP-95-987
M21	—	—	MSP-95-990	MTP-95-550	MXP-95-537
M26	—	—	MSP-95-989	MTP-95-549	MXP-95-540
M30	—	—	MSP-95-992	MTP-95-551	MXP-95-532
M31	—	—	MSP-95-993	MTP-95-521	MXP-95-522
M32	—	MSP-95-873	—	MTP-95-559	MXP-95-558
M35	—	MSP-95-502	—	MTP-95-502	MXP-95-502
M36	—	MSP-95-503	—	MTP-95-503	MXP-95-503
M37	—	MSP-95-504	—	MTP-95-504	MXP-95-504
M43	—	MSP-95-876	—	MTP-95-562	MXP-95-565
M45	—	MSP-95-500	—	MTP-95-500	MXP-95-500

# Accessories – Regulators

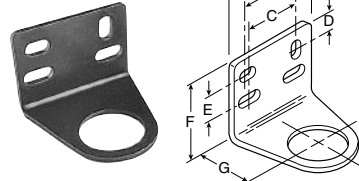
 = "Most Popular"



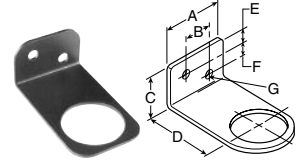
**Wall Mounting Bracket – Gauge Port Adapter**  
RRP-95-590, RRP-95-591



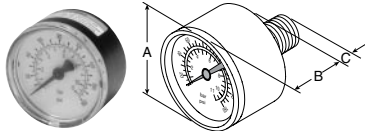
**Wall Mounting Bracket U-Bolt Pipe Clamp**  
GRP-95-734



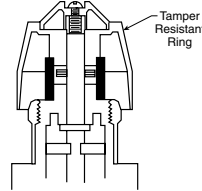
**L-Bracket**  
GPA-95-011, GPA-95-012



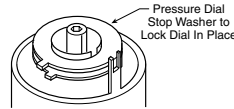
**L-Bracket**  
GRP-95-147



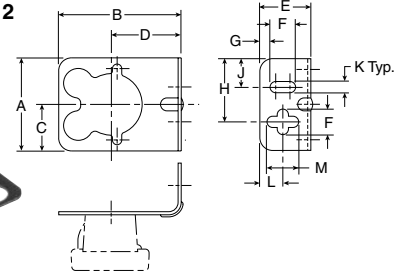
**Pressure Gauge**  
1/8 Port, CBM  
1/4 Port, CBM



**RPA-95-006**



**RRP-95-585**



**L-Bracket PS417B**  
(Includes Panel Mount Nut)

## Dimensions Inches (mm)

Accessories		Used On	A	B	C	D	E	F	G	H	J	K	L	M		
<b>Wall Mtg. Bracket U-Bolt Pipe Clamp</b>	GRP-95-734	For All Non-Modular Units Up to 1" NPT	3.34 (85)	2.76 (70)	1.62 (41)	1.10 (28)	0.30 (7.6)	—	—	—	—	—	—	—		
<b>L-Bracket with Plastic Panel Nut</b>	GPA-95-011	R16, P15, P16	2.50 (63.5)	1.60 (41)	1.50 (38)	0.46 (12)	0.62 (16)	1.88 (48)	1.62 (41)	—	—	—	—	—		
	GPA-95-747	RB3, RA3	1.50 (38)	0.68 (17)	1.00 (25)	1.75 (44)	0.34 (8.6)	0.31 (7.9)	0.22 (5.6)	—	—	—	—	—		
<b>L-Bracket</b>	PS417B	R03	2.12 (53)	3.62 (91)	3.40 (83)	2.53 (64)	1.88 (47)	0.50 (13)	0.20 (5)	1.24 (31)	0.56 (14)	0.22 (6)	0.45 (11)	0.62 (16)		
	GPA-95-012	R16, P15, P16	2.50 (63.5)	1.60 (41)	1.50 (38)	0.46 (12)	0.62 (16)	1.88 (48)	1.62 (41)	—	—	—	—	—		
	GRP-95-147	RB3, RA3	1.50 (38)	0.68 (17)	1.00 (25)	1.75 (44)	0.34 (8.6)	0.31 (7.9)	0.22 (5.6)	—	—	—	—	—		
	GPA-95-956	R26	3.00 (76.2)	2.06 (50.8)	—	0.55 (14.0)	3.50 (88.9)	4.05 (102.9)	1.88 (47.8)	—	—	—	—	—		
<b>Wall Mtg. Bracket Gauge Port Adapter</b>	RRP-95-590	P15, P16, R16, R21, R26, R30, R31, R40, R41	1.87 (47.5)	1.36 (34.5)	1.06 (27)	—	—	—	—	—	—	—	—	—		
<b>Gauges, 1/8 Port, CBM</b>																
K4515N18030 (0 to 30 PSIG)		R03	1.64 (41.6)	1.09 (27.6)	.80 (20)	—	—	—	—	—	—	—	—	—		
K4515N18060 (0 to 60 PSIG)		R03, RB3				—	—	—	—	—	—	—	—	—	—	—
K4515N18160 (0 to 160 PSIG)		R03, RB3				—	—	—	—	—	—	—	—	—	—	—
<b>Gauges, 1/4 Port, CBM</b>																
K4520N18030 (0 to 30 PSIG)		P15, P16	1.96 (49.8)	108 (27)	.91 (23)	—	—	—	—	—	—	—	—	—		
K4520N14060 (0 to 60 PSIG)		R16, R26, R31, R41, P15, P16				—	—	—	—	—	—	—	—	—	—	—
K4520N14160 (0 to 160 PSIG)		R16, R26, R30, R31, R40, R41, P15, P16				—	—	—	—	—	—	—	—	—	—	—
K4520N14300 (0 to 300 PSIG)		R16, R26, R30, R40				—	—	—	—	—	—	—	—	—	—	—
<b>Tamper Resistant Kit</b>	RPA-95-006	R16, R26, P15, P16	—	—	—	—	—	—	—	—	—	—	—	—		
	RRP-95-585	R11, R21, R31, R41	—	—	—	—	—	—	—	—	—	—	—	—		

**F**

# Regulator Replacement Kits

 = "Most Popular"

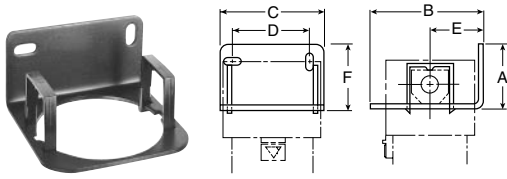
Model Regulator	Self-relieving Piston	Non-relieving Piston	Self-relieving Diaphragm	Non-relieving Diaphragm	Repair Kit Self-relieving	Repair Kit Non-relieving	Valve Assembly Kit
R03	—	—	—	—	PS423	PS422	PS424B
R16	—	—	RRP-96-213	RRP-96-216	RRP-95-130	RRP-95-129	RRP-96-215
R21	—	—	—	—	RRP-95-151	—	—
R26	—	—	RRP-96-238	RRP-96-332	RRP-95-951	RRP-95-950	RRP-96-294
R30	—	RRP-95-451	—	—	—	—	RRP-95-159
R31	RRP-95-192	—	—	—	RRP-95-152	—	RRP-96-935
R40	—	RRP-95-451	—	—	RRP-95-161	RRP-95-162	—
R41	RRP-95-192	—	—	—	—	—	RRP-96-935

Model	Self-relieving Diaphragm	Non-relieving Diaphragm	Repair Kit Self-relieving	Repair Kit Non-relieving	Valve Assembly Kit	Fluorocarbon Diaphragm Self-relieving	Fluorocarbon Valve Assembly
Precision Regulator P15 / P16	PRP-95-960	—	PRP-95-004	PRP-95-053	PRP-95-959	PRP-95-073	PPA-95-067

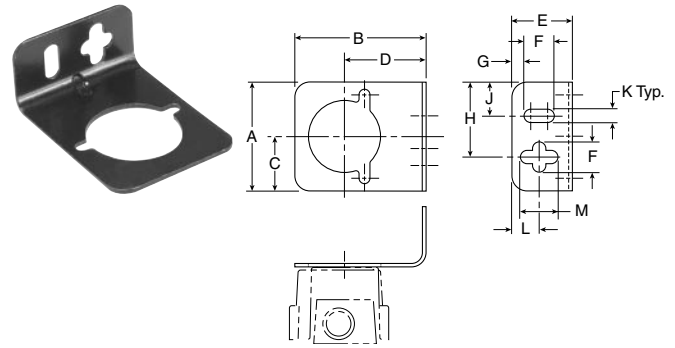
Model	Pressure Spring 0-10 PSIG	Pressure Spring 0-15 PSIG	Pressure Spring 0-30 PSIG	Pressure Spring 0-40 PSIG	Pressure Spring 0-50 PSIG	Pressure Spring 0-60 PSIG	Pressure Spring 0-125 PSIG	Pressure Spring 0-150 PSIG	Pressure Spring 0-160 PSIG	Pressure Spring 0-180 PSIG	Pressure Spring 0-250 PSIG
R16	—	—	—	—	RRP-95-222	—	RRP-95-224	—	—	—	RRP-95-218
R21	—	—	—	RRP-95-906	—	—	—	—	RRP-95-905	—	—
R26	—	—	—	—	—	RRP-95-962	GRP-95-225	—	—	—	RRP-95-219
R30	—	—	—	—	—	—	RRP-95-226	—	—	RRP-95-220	—
R31	—	—	—	RRP-95-906	—	—	—	—	RRP-95-905	—	—
R40	—	—	—	—	—	—	RRP-95-226	—	—	RRP-95-220	—
R41	—	—	—	RRP-95-906	—	—	—	—	RRP-95-905	—	—
P15 / P16	—	RRP-95-233	RRP-95-916	—	RRP-95-222	—	RRP-95-224	—	—	—	—

# Accessories – Lubricators

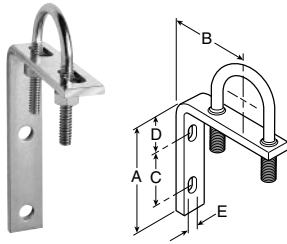
= "Most Popular"



**L-Bracket**  
GPA-95-016, GPA-95-946



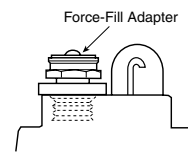
**L-Bracket**  
PS419



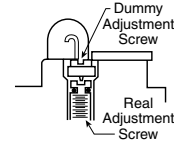
**Wall Mounting Bracket**  
U-Bolt Pipe Clamp  
GRP-95-734



**F442 Oil**  
F442001 - 1 Quart Bottle  
F442002 - 1 Gallon  
F442005 - 4 Gallon Case



**Force Fill Adapter**  
GRP-96-394



**Tamper Resistant Kit**  
LRP-95-587

## Dimensions

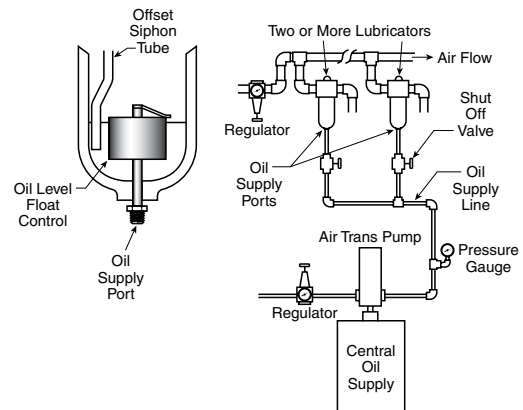
Inches  
(mm)

Accessories	Part Number	Used On	A	B	C	D	E	F	G	H	J	K	L	M
<b>Wall Mounting Bracket</b>	<b>GRP-95-734</b>	For All Non-Modular Units Up To 1" NPT	1.16 (29.5)	0.96 (24)	0.25 (6.3)	—	—	—	—	—	—	—	—	—
<b>L-Bracket</b>	<b>PS419</b>	L03	2.12 (53)	3.62 (91)	3.40 (83)	2.53 (64)	1.88 (47)	0.50 (13)	0.20 (5)	1.24 (31)	0.56 (14)	0.22 (6)	0.45 (11)	0.62 (16)
	<b>GPA-95-016</b>	L16 / L17	2.12 (53)	3.62 (91)	3.40 (83)	2.53 (64)	1.88 (47)	1.60 (41)	—	—	—	—	—	—
	<b>GPA-95-946</b>	L26 / L27	2.12 (53)	3.62 (91)	3.80 (96)	2.93 (74)	1.88 (47)	1.60 (41)	—	—	—	—	—	—
<b>Force-Fill Adapter</b>	<b>GRP-96-394</b>	L16 / L17, L26 / L27, L30, L31, L32, L34, L50	—	—	—	—	—	—	—	—	—	—	—	—
<b>Tamper Resistant Kit</b>	<b>LRP-95-587</b>	L16 / L17, L26 / L27, L30, L31, L32, L34, L40, L41, L42, L50	—	—	—	—	—	—	—	—	—	—	—	—
<b>Oil</b>	<b>F442001</b> – 1 Quart Bottle		—	—	—	—	—	—	—	—	—	—	—	—
	<b>F442002</b> – 1 Gallon		—	—	—	—	—	—	—	—	—	—	—	—
	<b>F442005</b> – 4 Gallon Case		—	—	—	—	—	—	—	—	—	—	—	—

## Auto-Fill™ Adapter Kits

These adapters provide automatic oil replenishing to several lubricators from a central oil supply. See schematic for installation. Pump, regulators, shut-off valves not included. Oil supply pressure must be a least 5 PSIG (0.3 bar) above compressed air pressure at lubricators, but no higher than 50 PSIG (3.4 bar) above. Oil pressure must be turned off when air pressure is turned off.

Order Part No. LRP-95-965 to adapt L26, L27, and No. LRP-95-698 for L30 and L34 series.



**F**

# Lubricator Replacement Bowl Kits

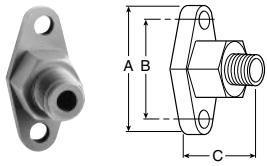
 = "Most Popular"



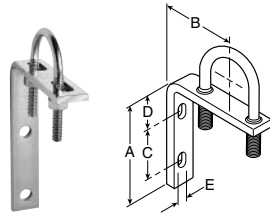
Model Lubricator	Plastic Bowl No Drain Port	Plastic Bowl / Bowl Guard Manual Drain	Plastic Bowl Petcock Drain	Metal Bowl / Sight Gauge Manual Drain
L03	PS421	—	—	—
L16	LRP-96-937	—	LRP-96-543	GRP-95-133
L17	LRP-96-937	—	LRP-96-543	GRP-95-13
L26	LRP-95-938	LRP-95-967	LRP-95-958	GRP-95-931
L27	LRP-95-938	LRP-95-967	LRP-95-958	GRP-95-931
L30	LRP-96-940	LRP-95-830	LRP-96-160	GRP-95-676
L34	LRP-96-940	LRP-95-830	LRP-96-160	GRP-95-676
L40	LRP-96-940	LRP-95-830	LRP-96-160	GRP-95-676
L50	LRP-96-940	LRP-95-830	LRP-96-160	GRP-95-676

# Accessories Filter / Regulators

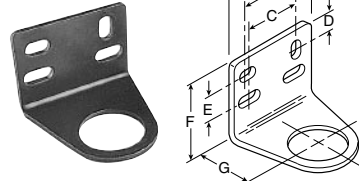
 = "Most Popular"



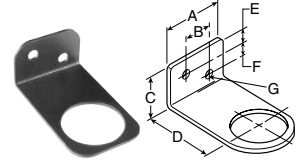
**Wall Mounting Bracket – Gauge Port Adapter**  
RRP-95-590, RRP-95-591



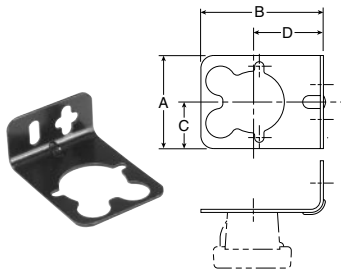
**Wall Mounting Bracket U-Bolt Pipe Clamp**  
GRP-95-734



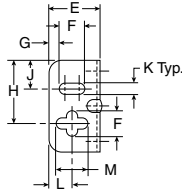
**L-Bracket**  
GPA-95-011, GPA-95-012



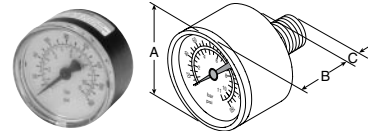
**L-Bracket**  
GRP-95-147



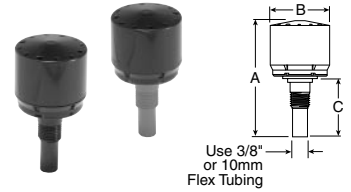
**L-Bracket PS417B**  
(Includes Panel Mount Nut)



**Tamper Resistant Kit**  
RPA-95-006



**Pressure Gauge**  
1/8 Port, CBM  
1/4 Port, CBM



**Automatic Drain**  
GRP-95-973, GRP-95-981

## Dimensions

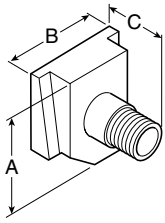
Inches  
(mm)

Accessories		Used On	A	B	C	D	E	F	G	H	J	K	L	M
<b>Wall Mtg. Bracket U-Bolt Pipe Clamp</b>	<b>GRP-95-734</b>	For All Non-Modular Units Up to 1" NPT	3.34 (85)	2.76 (70)	1.62 (41)	1.10 (28)	0.30 (7.6)	—	—	—	—	—	—	—
<b>L-Bracket with Plastic Panel Nut</b>	<b>GPA-95-011</b>	CB6, PC5, PC6	2.50 (63.5)	1.60 (41)	1.50 (38)	0.46 (12)	0.62 (16)	1.88 (48)	1.62 (41)	—	—	—	—	—
	<b>GRP-95-747</b>	BB3, BA3	1.50 (38)	0.68 (17)	1.00 (25)	1.75 (44)	0.34 (8.6)	0.31 (7.9)	0.22 (5.6)	—	—	—	—	—
<b>L-Bracket</b>	<b>PS417B</b>	B03	2.12 (53)	3.62 (91)	3.40 (83)	2.53 (64)	1.88 (47)	0.50 (13)	0.20 (5)	1.24 (31)	0.56 (14)	0.22 (6)	0.45 (11)	0.62 (16)
	<b>GPA-95-012</b>	CB6, PC5, PC6	2.50 (63.5)	1.60 (41)	1.50 (38)	0.46 (12)	0.62 (16)	1.88 (48)	1.62 (41)	—	—	—	—	—
	<b>GRP-95-147</b>	BB3, BA3	1.50 (38)	0.68 (17)	1.00 (25)	1.75 (44)	0.34 (8.6)	0.31 (7.9)	0.22 (5.6)	—	—	—	—	—
<b>Automatic Drains, Nitrile</b>	<b>GRP-95-973</b>	CB6	2.93 (74.4)	1.47 (37.3)	1.17 (29.7)	—	—	—	—	—	—	—	—	—
<b>Automatic Drains, Fluorocarbon</b>	<b>GRP-95-981</b>		—	—	—	—	—	—	—	—	—	—	—	—
<b>Gauges, 1/8 Port, CBM</b>		B03	1.64 (41.6)	1.09 (27.6)	.80 (20)	—	—	—	—	—	—	—	—	—
<b>K4515N18030 (0 to 30 PSIG)</b>														
<b>K4515N18060 (0 to 60 PSIG)</b>														
<b>K4515N18160 (0 to 160 PSIG)</b>		B03, BB3, BA3	—	—	—	—	—	—	—	—	—	—	—	—
<b>Gauges, 1/4 Port, CBM</b>		PC5, PC6	1.96 (49.8)	1.08 (27)	.91 (23)	—	—	—	—	—	—	—	—	—
<b>K4520N18030 (0 to 30 PSIG)</b>														
<b>K4520N14060 (0 to 60 PSIG)</b>														
<b>K4520N14160 (0 to 160 PSIG)</b>														
<b>K4520N14300 (0 to 300 PSIG)</b>		CB6	—	—	—	—	—	—	—	—	—	—	—	—
<b>Tamper Resistant Kit</b>	<b>RPA-95-006</b>	CB6, PC5, PC6	—	—	—	—	—	—	—	—	—	—	—	—

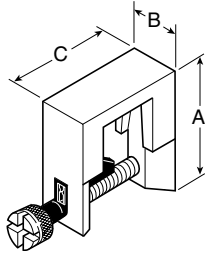
F

# Modular 16 / 26 Accessories

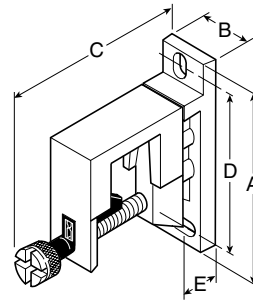
 = "Most Popular"



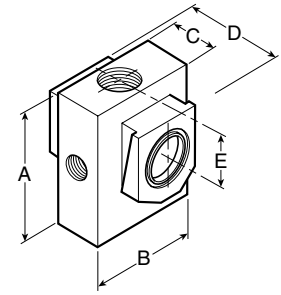
**Modular Pipe Adapter**  
GPA-95-035,  
GPA-95-036,  
GPA-95-037



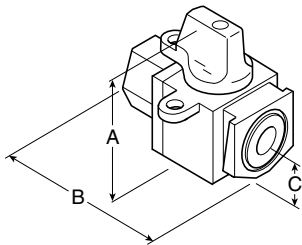
**Modular Sleeve**  
GPA-95-292



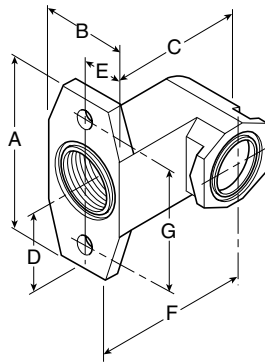
**Modular Sleeve with T-Bracket**  
GPA-95-969



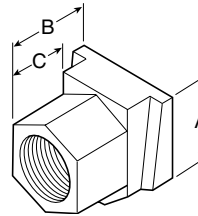
**Modular Manifold Block  
(3 Auxiliary Ports)**  
GPA-95-919



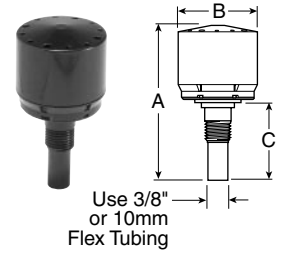
**Modular 3-Way Shut-off Valve**  
GPA-95-096,  
GPA-95-097,  
GPA-95-098



**Right-Angle Bracket**  
GPA-95-042



**Modular Connecting  
End Block Set**  
GPA-95-223, -224,  
-225, -320, -321



**Automatic Drain**  
GRP-95-973

## Dimensions Inches (mm)

Accessories	Part Number	Pipe Size NPT	A	B	C	D	E	F	G
Modular Pipe Adapter	GPA-95-035	1/4	1.25	1.25	1.14	—	—	—	—
	GPA-95-036	3/8	(31.7)	(31.7)	(28.9)	—	—	—	—
	GPA-95-037	1/2							
Modular Sleeve	GPA-95-292	—	2.55 (64.8)	0.82 (20.8)	1.92 (48.8)	—	—	—	—
Modular Sleeve With T-Bracket	GPA-95-969	—	3.60 (91.4)	.82 (20.8)	3.43 (87.1)	2.98 (75.7)	0.78 (19.8)	—	—
Modular Manifold Block (3 Auxiliary Ports)	GPA-95-919	1/4	2.30 (58.4)	2.00 (50.8)	0.72 (18.3)	1.57 (39.9)	0.98 (24.9)	—	—
Modular 3-Way Shut-off Valve	GPA-95-096	1/4	2.38	2.51	0.69	—	—	—	—
	GPA-95-097	3/8	(60.4)	(63.7)	(17.5)	—	—	—	—
	GPA-95-098	1/2							
Modular Right Angle Bracket	GPA-95-042	—	2.75 (69.8)	1.25 (31.7)	2.38 (60.4)	1.00 (25.4)	0.63 (16.0)	1.75 (44.5)	2.00 (50.8)
Modular Connecting End Block Set	GPA-95-223	1/4	1.25	1.19	0.75	—	—	—	—
	GPA-95-224	3/8	(31.7)	(30.2)	(19.0)	—	—	—	—
	GPA-95-225	1/2							
	GPA-95-320	3/4							
	GPA-95-321	1							
Automatic Drain	GRP-95-973	1/8	2.93 (74.4)	1.47 (37.3)	1.17 (29.7)	—	—	—	—