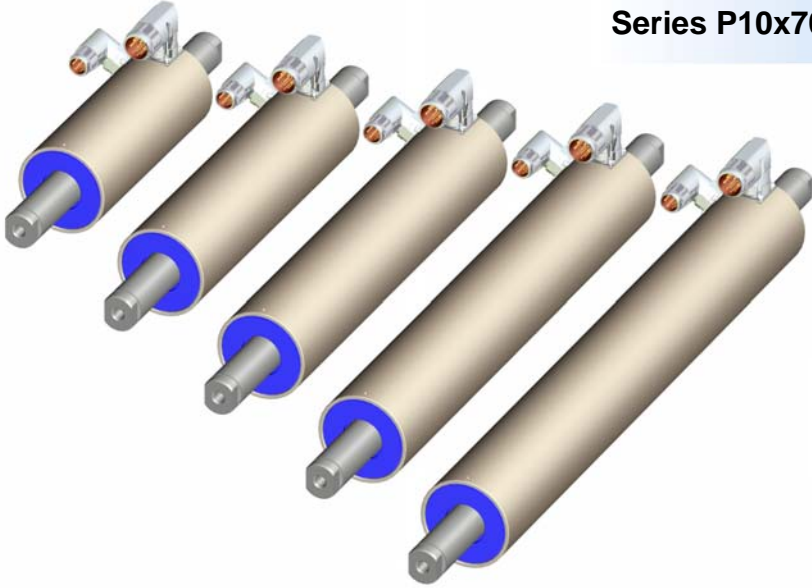


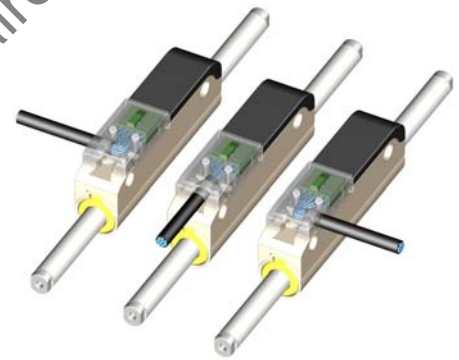
Linear Motor  
Series P10x70

**NEW**



Linear Motor Series  
P01-23Sx80-HP

**NEW**



Servo Controller  
Series E1400

**NEW**

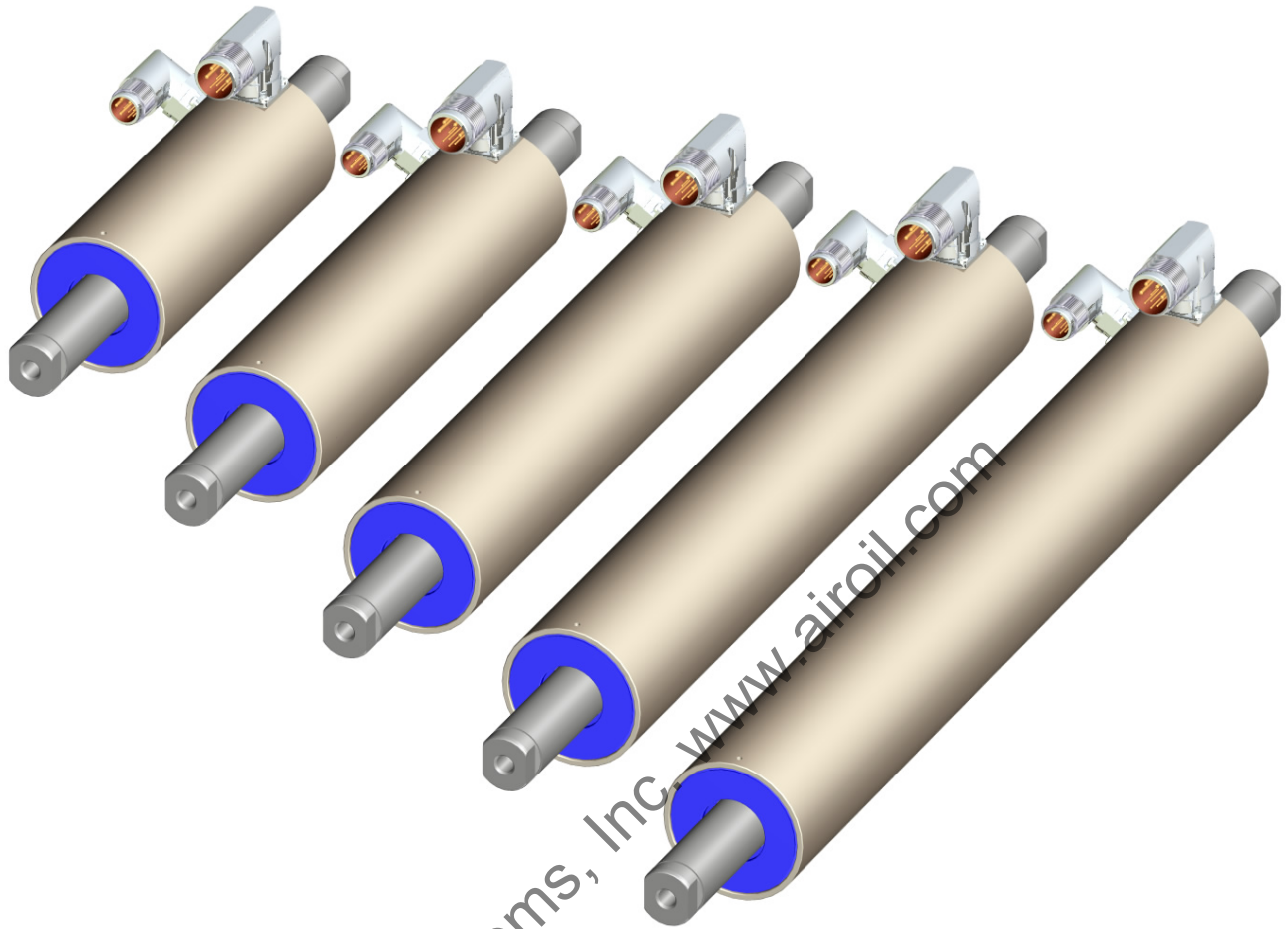


Servo Controller  
Series B1150

**NEW**



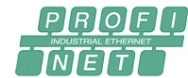
## New Linear Motor Series P10-70



The new Linear Motors series P10-70 extends LinMot's product range of industrial Linear Motors in the upper force range. The complete new designed three phase motors with their very compact dimensions may produce forces up to 2'500N. Like the smaller LinMot motors the new P10-70 series motors come with an electronic nameplate, an improved internal position measuring sensor and absolute temperature sensors. The new motor series with only 70mm stator diameter is available in five different lengths for forces from 500N up to 2'500N.

Technical Data	P10-70x80	P10-70x160	P10-70x240	P10-70x320	P10-70x400
Supply Voltage	3x340...480 VAC				
Continuous Phase Current	0.7/1.2 A	1.4/2.4 A	2.1/3.6 A	2.8/4.8 A	3.5/6.0 A
Peak Phase Current	5.0 A	10.0 A	15.0 A	20.0 A	25.0 A
Peak Force	500 N	1'000 N	1'500 N	2'000 N	2'500 N
Continuous Force	70/120 N	140/240 N	210/360 N	280/480 N	350/600 N
Stroke max.	1'320 mm	1'240 mm	1'160 mm	1'080 mm	1'000 mm
Stator Diameter	70 mm				
Slider Diameter	28 mm				
Stator Length	180 mm	260 mm	340 mm	420 mm	500 mm
Slider Length max.	1'600 mm				
Stator Weight	2.4 kg	3.9 kg	5.4 kg	6.8 kg	8.2 kg
Slider Weight	4.5 kg/m				
Certifications	CE / UL pending				

## New Servo Controller Series E1400



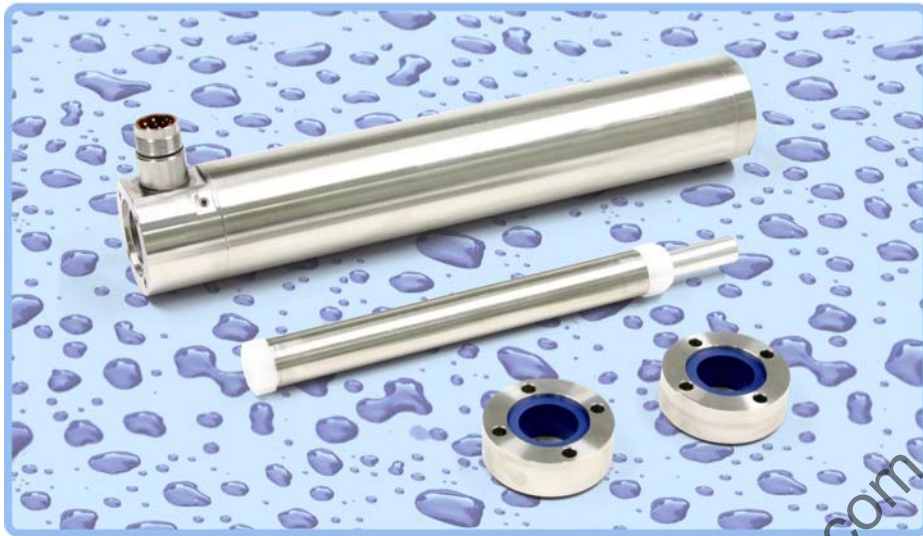
The Servo Controller series E1400 designed to control the new powerful three phase Linear Motors P10-70 with a wide range of field buses like CANopen, DeviceNet, Profibus or the Industrial Ethernet Interfaces Powerlink, EtherCAT, Ethernet IP, Sercos III and Profinet will be launched in the second half of 2011. The Controller series E1400 with the three-phase power stage supplied directly from the AC-mains 3 x 340...480 VAC comes in three different power classes for 3A, 6A or 9A phase current. The very compact design with a width of only 50mm makes it also interesting for single or multi axes applications with rotary motors.

Technical Data	E1400-xx-SN	E1400-xx-RN	E1400-xx-QN
Supply Voltage	3x340...480 VAC		
Continuous Phase Current	3.0 Arms	6.0 Arms	9.0 Arms
Peak Phase Current	9.0 Arms	18.0 Arms	27.0 Arms
Height	300 mm (345 mm)		
Width	50 mm		
Depth	240 mm		
PWM / Current Controller	8 / 16 kHz		
Position Controller / IO-Update	125 usec		
Field buses	CANopen, DeviceNet, Profibus DP		
Industrial Ethernet	EtherCAT, Powerlink, Ethernet IP, Sercos III, Profinet		
Configuration Interface	2nd Ethernet-Interface for configuration and remote maintenance		
Certifications	CE / UL pending		

Product announcement

Preliminary technical data, product available in the 3<sup>rd</sup> / 4<sup>th</sup> quarter 2011

## **Stainless Steel Linear Motors P01-37x120-HP-SSC**

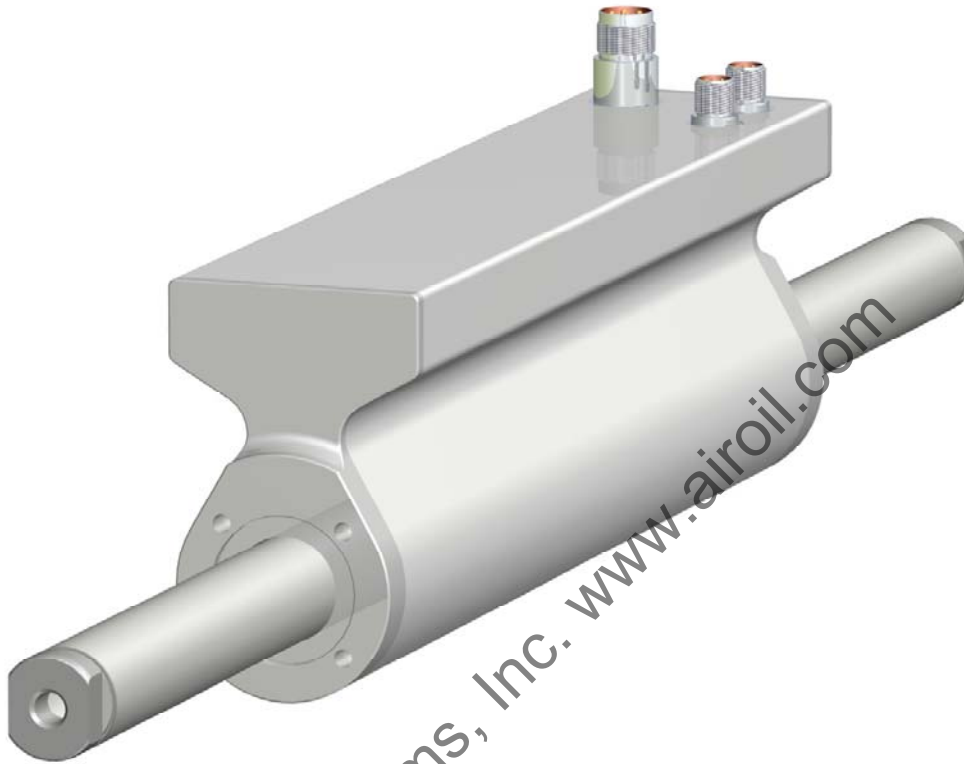


LinMot completes the stainless steel series of industrial Linear Motors with the smaller size P01-37x120F-HP-SSC with the outstanding protection rating IP69K. The technology of linear direct drives together with the smooth and hygienic design fits for applications in food, pharmaceutical, packaging machines and many other industrial applications in very harsh environments. Where existing solutions with pneumatic cylinders require higher dynamics, more precision or multiple positions, a stainless steel motor from LinMot is the solution.

Technical Data	P01-48x360F-SSC	P01-48x240F-SSC	NEW: P01-37x120F-HP-SSC
Peak Force	890 N	490 N	210 N
Continuous Force	129 / 360 N	86 / 240 N	24 / 65 N
Stroke max.	880 mm	1'000 mm	700 mm
Stator Diameter	60 mm	60 mm	48 mm
Slider Diameter	27 mm	27 mm	19 mm
Stator Length	465 mm	345 mm	245 mm
Slider Length max.	1'400 mm	1'400 mm	1'000 mm
Ordering Information			
PS01-37x120F-HP-SSC-R	Stator Stainless Steel IP69K		0150-1282
PS01-37x120F-HP-SSC-R-FC	Stator Stainless Steel IP69K, Fluid Cooling		0150-1283
PB01-37x24-P-SS	Bearing for PS01-37x...-SSC (Stainless Steel)		0150-3290
PB01-37x24-P-WD	Bearing for PS01-37x120-SSC (Wash Down)		0150-3299

**New Product** These products are already available

## **Stainless Steel Linear Motor with internal Servo Controller**



For applications in the pharma- and food industries, LinMot developed a new stainless steel motor with an integrated Servo Controller. The stainless steel motor casing is completely sealed and all connections are laser welded. This construction together with the specially developed motor connector guarantees the outstanding protection rating IP69K for this new design element. The motor casing is internally completely filled to prevent condensation water inside the motor due to temperature changes. Communication to the overlaid machine controller can be done over field buses or industrial ETHERNET.

Technical Data	PSC01-48x240-SSC
Supply Voltage	72 VDC
Continuous Current	2.5/7.1 A
Peak Current	15.0 A
Peak Force	470 N
Continuous Force	86 / 240 N
Stroke max.	1'000 mm
Stator Diameter	60 mm (70x110)
Slider Diameter	27 mm
Stator Length	345 mm
Slider Length max.	1'400 mm
Stator Weight	5.20 kg
Slider Weight	4.25 kg/m

## Linear Motors for Hazardous Environments (ATEX)



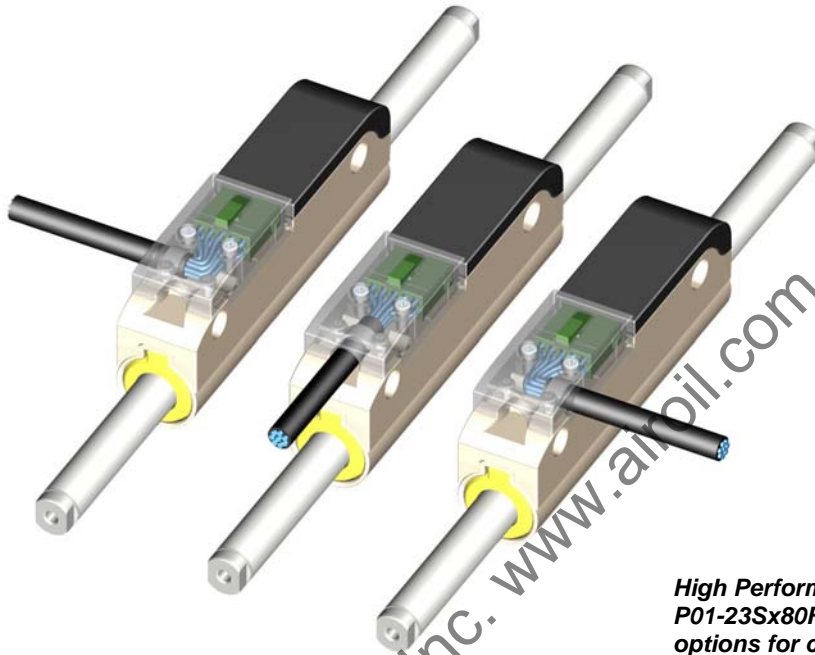
In many industrial sectors as well as in domestic life, explosion protection or explosion hazards are ever-present, e.g. in the chemicals industry, in refineries, on drilling platforms, at petrol stations, in feed manufacturing and in sewage treatment plants. LinMot's explosion-proof motors are ideal for a wide variety of applications where hazardous fumes, gases or dust may be present. The motors are available in three different sizes with forces from 210N up to 890N and may be used in zones 1 and 2 with hazardous gas and in zones 21 and 20 with hazardous dusts.

Technical Data	P01-48x360F-ATEX	P01-48x240F-ATEX	P01-37x120F-HP-ATEX
Supply Voltage	72 VDC		
Continuous Current	4.7/13.0 A	4.5/12.6 A	1.7/4.6 A
Peak Current	32.0 A	26.0 A	15.0 A
Peak Force	890 N	490 N	210 N
Continuous Force	129 / 360 N	86 / 240 N	24 / 65 N
Stroke max.	880 mm	1'000 mm	700 mm
Stator Diameter	60 mm	60 mm	48 mm
Slider Diameter	27 mm	27 mm	19 mm
Stator Length	465 mm	345 mm	245 mm
Slider Length max.	1'400 mm	1'400 mm	1'000 mm
Stator Weight	5.00 kg	3.70 kg	1.68 kg
Slider Weight	4.25 kg/m	4.25 kg/m	2.00 kg/m

Product announcement

Preliminary technical data, product available in the 4<sup>th</sup> quarter 2011

## Small Size High Performance Linear Motors



**High Performance Linear Motor  
P01-23Sx80F-HP with three  
options for cable connection**

The new linear motor P01-23Sx80F-HP completes LinMot's product range as the smallest member of the high performance series. The new motor with a connector for round cable has the same dimension as the standard version with the flat motor cable, but has nearly twice the nominal power. The higher performance with the same form factor allows increasing the performance for existing machines and systems. Additionally, with the new linear motors, new highly dynamic applications can be realized in a small space, which was previously not possible.

Technical Data	P01-23Sx80F-HP-K
Supply Voltage	24...72 VDC
Continuous Current	1.7/2.8 N
Peak Current	7.5 A
Peak Force	67 N
Continuous Force	15/25 N
Stroke max.	770 mm
Stator Diameter	23 mm
Slider Diameter	12 mm
Stator Length	105 mm
Slider Length max.	850 mm
Stator Weight	250 g
Slider Weight	825 g/m
<b>New Product</b>	These products are already available

## Multi Axes Servo System B1150



EtherCAT®

ETHERNET  
POWERLINK  
STANDARDIZATION GROUP

EtherNet/IP®

SERCOS  
interface

PROFINET  
INDUSTRIAL ETHERNET

The new servo controllers series B1150 are designed for dynamic control of LinMot linear motors and brushless rotary motors in multi axes systems. The compact design saves space in the control cabinet and reduces the required space in multi axes applications to a minimum. Together with the bus modules B8050, up to eight series B1150 Controllers may be controlled over the Industrial Ethernet interfaces EtherCAT, Powerlink, Ethernet IP, Sercos III or Profinet. The interfacing to the overlaid control machine controller is identical to the functionality, commands and parameter access of the well-known series B1100-GP controllers.

Technical Data	B1150-ML	B1150-ML-HC	B1150-ML-XC
Supply Voltage		30...72 VDC	
Peak Current	8.0 A	15.0 A	25.0 A
Height		166 mm (206 mm)	
Width		31 mm	
Depth		106 mm	
Bus Cycle Time		2 msec	
Position Controller / IO-Update		200 / 200 usec	
PWM / Current Controller		20kHz / 100 usec	
Industrial Ethernet	EtherCAT, Powerlink, Ethernet IP, Sercos III, Profinet		

Ordering Information			
B1150-ML	MC-Link Controller	(72V/8A)	0150-1796
B1150-ML-HC	MC-Link Controller	(72V/15A)	0150-1797
B1150-ML-XC	MC-Link Controller	(72V/25A)	0150-1798
B8050-ML-EC	8-Axes Bus Module EtherCAT		0150-1878
B8050-ML-PL	8-Axes Bus Module Powerlink		0150-1877
B8050-ML-IP	8-Axes Bus Module Ethernet IP		0150-1879
B8050-ML-SC	8-Axes Bus Module Sercos III	from 2.Q 2011	0150-1881
B8050-ML-PN	8-Axes Bus Module Profinet	from 3.Q 2011	0150-1880

New Product	These products are already available
-------------	--------------------------------------

## Servo Controller Series E1200



EtherCAT®

ETHERNET  
POWERLINK  
STANDARDIZATION GROUP

EtherNet/IP™

SERCOS  
interface

PROFI  
NET

The E1200 series controllers will be available in an low current version\* dedicated to control the smaller LinMot motors. The existing E1200 series in the UC-version with 32A phase current will be extended by its smaller version with 8A phase current. Besides this new product, the entire E1200 series controllers offer new features like jerk free motions with modified sinus profiles, SSI-interface and connectivity to low priced transsonar sensors for cost efficient absolute position feedback. These features and most Ethernet interfaces are available. Sercos III (2. Q 2011) and Profinet (4. Q. 2011) will follow in 2011.

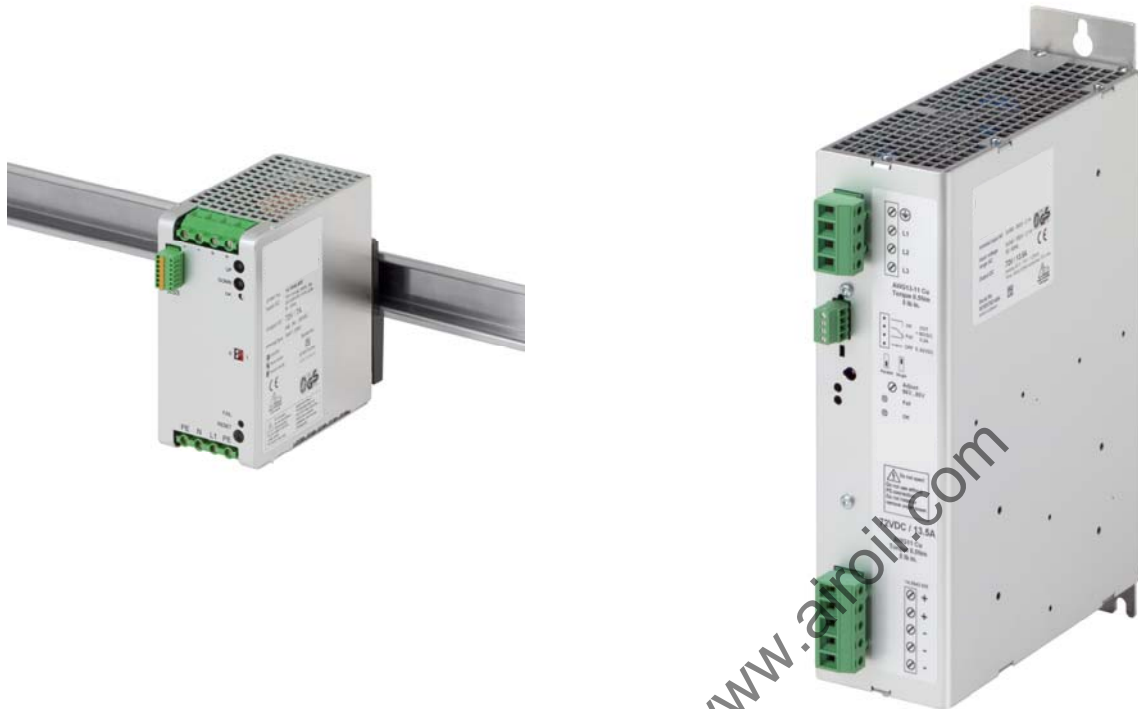
Technical Data	E1250-xx	E1250-xx-UC
Supply Voltage	30...72 VDC	
Continuous Phase Current	6.0 A	12.0 A
Peak Phase Current	8.0 A	32.0 A
Height	233 mm (270 mm)	
Width	40 mm	
Depth	180 mm	
PWM / Current Controller	20 / 10 kHz	
Position Controller / IO-Update	100 usec	
Field buses / Industrial Ethernet	CANopen, Profibus DP, EtherCAT, Powerlink, Ethernet IP, Sercos III, Profinet	
Configuration Interface	2nd Ethernet-Interface for configuration and remote maintenance	
Certifications	CE / UL pending	

Ordering Information			
E1200-DP	General Purpose Controller	(72V/8A)	0150-1882
E1230-DP	Profibus DP Controller	(72V/8A)	0150-1883
E1250-EC	EtherCAT Controller	(72V/8A)	0150-1884
E1250-PL	Powerlink Controller	(72V/8A)	0150-1885
E1250-IP	Ethernet IP Controller	(72V/8A)	0150-1886
E1250-SC	Sercos III Controller	(72V/8A)	0150-1887
E1250-PN	Profinet Controller	(72V/8A)	0150-1888

New Product

These products are available from 2<sup>nd</sup> quarter 2011

## Switched Mode Power Supplies 500W/1'000W



As an alternative to the transformer supplies T01, LinMot offers two new switched mode power supplies S01 with 480W and 1'000W nominal power. The new S01-72/500 and S01-72/1000 supplies have an advanced power boost mode that offers 150% or 200% output power for a short period of time. This important feature permits the motor to get more power during acceleration and to size the power supply for peak current consumption instead of nominal current. Compared to the transformer supplies, the new switched mode supplies are much lighter and more compact.

Technical Data	S01-72/500	S01-72/1000
Supply Voltage	1 x 120/230 VAC	3 x 340...550 VAC
Output Voltage	72 VDC (configurable 54...80 VDC)	72 VDC (configurable 56...80 VDC)
Output Power RMS/Boost	480W (720W for 0.5 seconds)	1'000 W (2'000W for 2.0 seconds)
Output Current RMS/Boost		
Height	125 mm	230 mm
Width	62 mm	66 mm
Depth	121 mm	183 mm
Weight	1.0 kg	2.0 kg
Certifications	CE / UL	CE / CSA

Ordering Information			
S01-72/500	Power Supplies 72V/500W	1 x 120/230VAC	0150-1874
S01-72/1000	Power Supplies 72V/1000W	3 x 340...550VAC	0150-1872

**New Product** These products are already available

**LinMot offers a wide range of accessories**



**Up-to-date information about new products: [www.LinMot.com](http://www.LinMot.com)**

**LinMot®**
Home | Produkte | Download | Anwendungen | News & Events | Kontakt | Sitemap | Login
EN DE FR IT

- Home
- Firma
- Jobs
- Produkte
- Download
- Anwendungen
- News & Events
- Kontakt
- Sitemap
- Login

### Linearmotor Systeme

LinMot Linearmotoren und Servocontroller sind für den Einsatz in rauher und anspruchsvoller Industrieumgebung aufgebaut. Sie zeichnen sich durch herausragende technische Eigenschaften, wartungsarmen Betrieb und extreme Langlebigkeit aus. Dies macht sie zu den idealen Lösungen für lineare Bewegungen in Verpackungsmaschinen, Handliniengeräten, Textilmaschinen, Sondermaschinen u.s.w. .

Die hohe Integrationsdichte (Lagerung und Positionssensorik im Motor integriert) sowie die vielfältigen Möglichkeiten, die Systeme in alle gängigen Steuerungssysteme einzubinden, verkürzen die Design-In Zeit. Zudem steht mit dem eigenständigen MPC (Multi Positioning Cylinder)-System eine Produktreihe zur Verfügung, welche speziell den Bedürfnissen einfacher Positionieraufgaben gerecht wird (Ersatz von pneumatischen Zylindern).

suchen

**Aktuell**

**LinMot-Talk 4**

New LinMot-Talk 4 Build 20100707

Kat: Software

**Stainless Steel Motor IP69K**

Linear Motor Series P01-48/240F-SSC and P01-37x120F-HP-SSC.

Kat: Motoren

**Servo Controller Serie E1200**

Servo Controller Serie E1200

Kat: Servo Controller

**Aktuell**

**SPS IPC DRIVES 2010**

23rd - 25th Nov 2010 - Nuremberg, Germany

Kat: Messen

© 2000-2010 NTI AG | Haerdstrasse 15, CH-8957 Spreitenbach | +41-(0)56-419 91 91 | office@linmot.com

# LinMot®

**Everything for linear motion from a single source**

## NTI AG

Haerdlistrasse 15  
CH - 8957 Spreitenbach  
Schweiz

Tel.: +41-(0)56-419 91 91  
Fax: +41-(0)56-419 91 92  
E-Mail: office@linmot.com  
Web: www.linmot.com

## LinMot, Inc.

5750 Townline Road  
Elkhorn, WI 53121  
USA

Tel.: 877-546-3270  
Fax: 800-463-8708  
E-Mail: sales@linmot-usa.com  
Web: www.linmot-usa.com



Controller



Motor Cables



Linear Motors



Linear Modules



Flanges