

HANNA
cylinders

Series T750 Pneumatic and Hydraulic Cylinders

**For Heavy-Duty Pneumatic or
Medium-Duty Hydraulic Service**



Advantages

- 1.50" through 4.00" Bores
- 250 p.s.i. Pneumatic Service
- 1000 p.s.i. Hydraulic Service
- Extra-long Rod and Piston Bearings
- Rugged Construction for Extended Life
- Unique, Positive Cushioning Design
- Conform to J.I.C. Standards

HANNA cylinders

Series T750

Heavy-Duty Pneumatic- Medium-Duty Hydraulic Cylinders

Hanna's Series T750 cylinders are designed for heavy-duty pneumatic service up to 250 p.s.i., or medium-duty hydraulic service to 1000 p.s.i. Offered in 1.50" through 4.00" bore sizes, they are available in six mounting styles. The units conform to J.I.C. standards.

Featuring rugged construction and extra-long rod and piston bearings, Series T750 cylinders are engineered to provide extended life. Unique cushion design assures positive cushioning over the entire cushion stroke, with immediate full speed on return stroke.

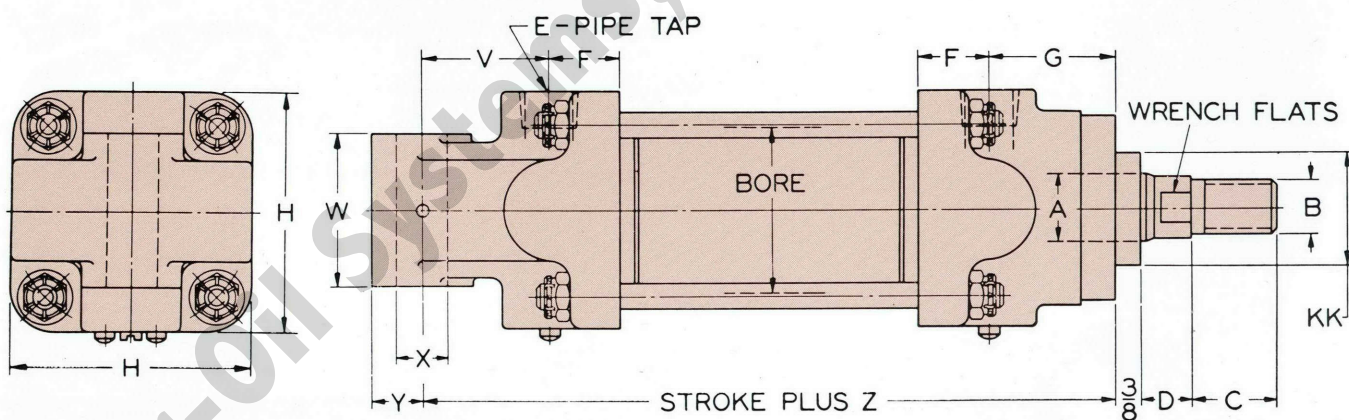
Ideal for a wide range of applications, Series T750 cylinders have been used extensively in packaging machinery and conveying equipment.

Dimensions

All dimensions shown on Pages 2 thru 4 are of cushioned and non-cushioned cylinders in inches. Dimensions are for

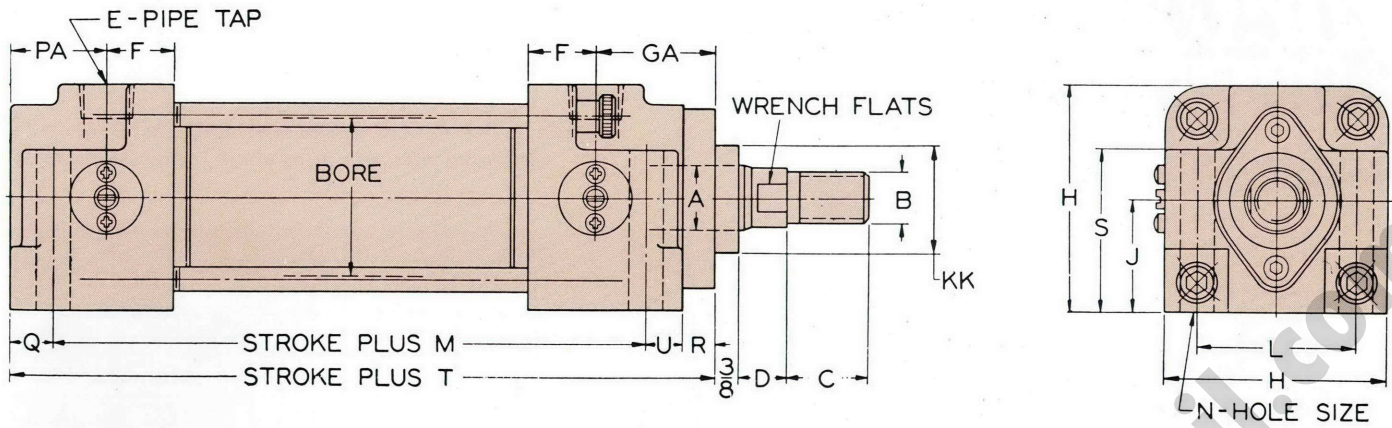
zero stroke. Rod ends shown will be furnished unless otherwise specified. Alternate rod ends are available.

Model T751 - Hinge Mount

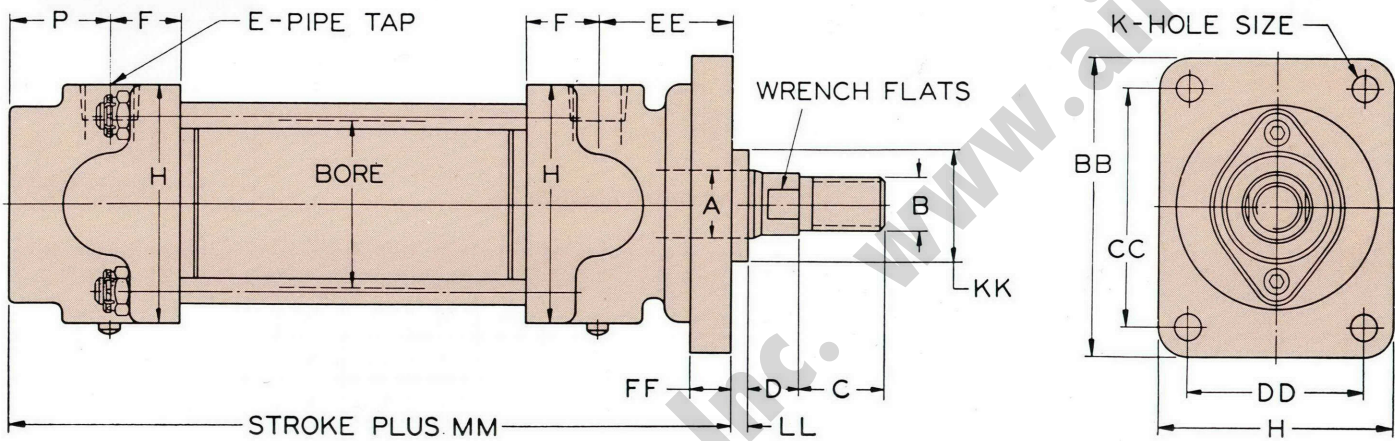


BORE	A	B	C	D	E	F	G	H	J	K	L	M	N	P	Q	R	S	T
1½	¾	⅞-20	⅝	⅝	¾	1⅜	1⅜	2½	1¼	1⅜	1¼	4¾	1⅜	1¼	⅝	⅞	1¾	5⅜
2	¾	½-20	⅞	¾	⅝	1	1⅜	3	1½	1⅜	2	4¾	1⅜	1⅜	⅝	½	2⅜	6¾
2½	1	¾-16	1¼	¾	¾	1⅜	1⅜	3½	1¾	1⅜	2½	4¾	1⅜	1½	1⅜	½	2½	6¾
3	1	¾-16	1¼	¾	¾	1⅜	1⅜	4¼	2⅜	1⅜	3	5⅜	1⅜	1½	1⅜	½	2⅜	6¾
4	1½	1-14	1¼	⅞	¾	1¼	2⅜	5¼	2⅜	2⅜	3¾	7¼	2⅜	2⅜	⅞	⅝	3⅜	9½

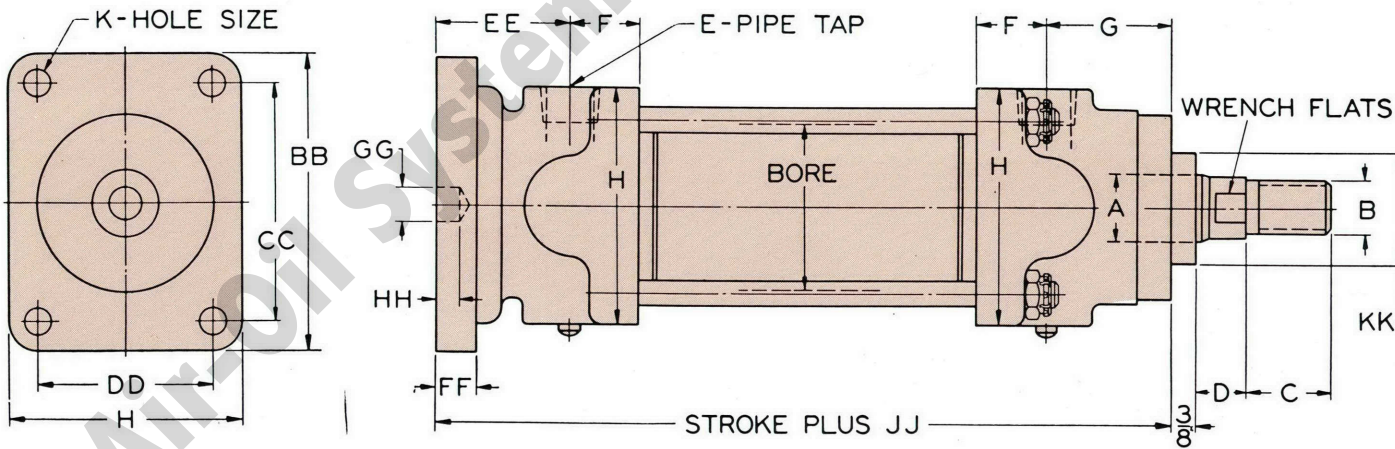
Model T752 - Foot Mount



Model T753 - Rod Flange Mount



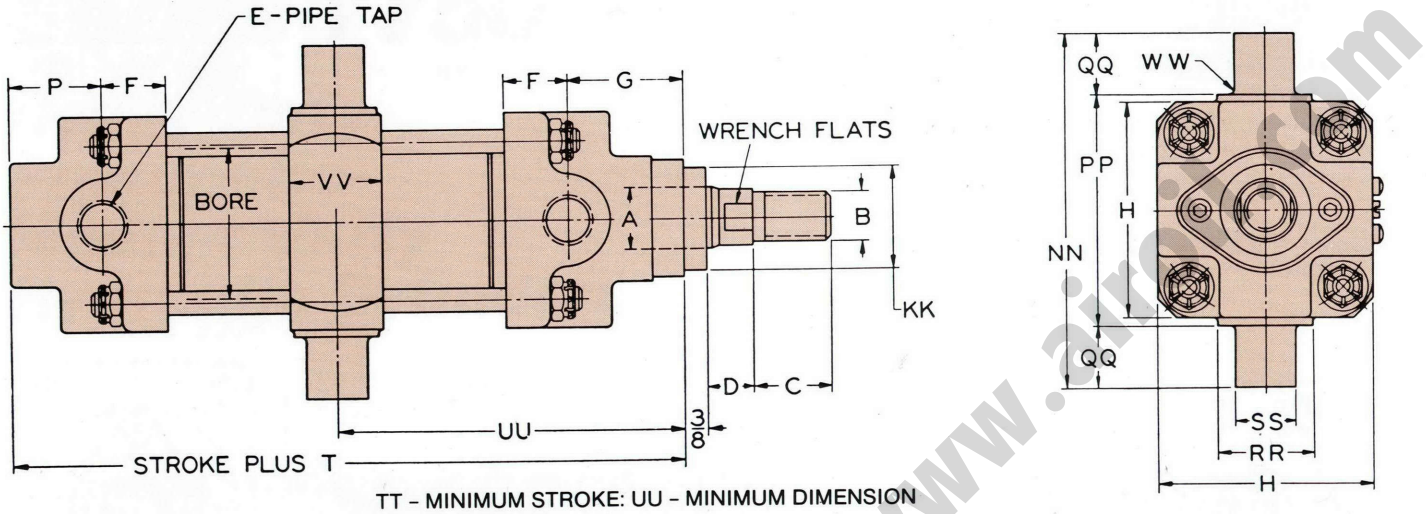
Model T754 - Blind Flange Mount



U	V	W	X	Y	Z	BB	CC	DD	EE	FF	GG	HH	JJ	KK	LL	MM	PA	GA
1/2	1 1/8	1 1/2	1/2	1/2	6 1/16	3 1/2	2 3/4	1 3/4	1 1 1/16	7/16	5/16	3/8	6 3/8	1 1/4	1/4	6 1/16	1 1/4	1 9/16
1/2	1 1/8	1 3/4	5/8	5/8	6 9/16	4	3 1/8	2 1/8	1 1 1/16	1/2	3/8	3/8	6 7/8	1 1/8	1/4	6 1/2	1 7/16	1 13/16
9/16	1 7/8	2 1/4	3/4	3/4	7	4 3/8	3 1/2	2 5/8	2	5/8	1/2	3/8	7 1/8	1 1/8	1/4	6 3/4	1 1/2	1 7/8
9/16	1 7/8	2 1/2	7/8	7/8	7 1/4	5	4	3 1/4	2	5/8	1/2	3/8	7 3/8	1 5/8	1/4	7	1 1/2	1 7/8
3/4	2 1/8	3	1	1	9	8	6 1/2	3 3/4	2 3/4	1	1/2	1/2	9 1/8	2 1/2	1/4	8 5/8	2 5/8	3 1/8

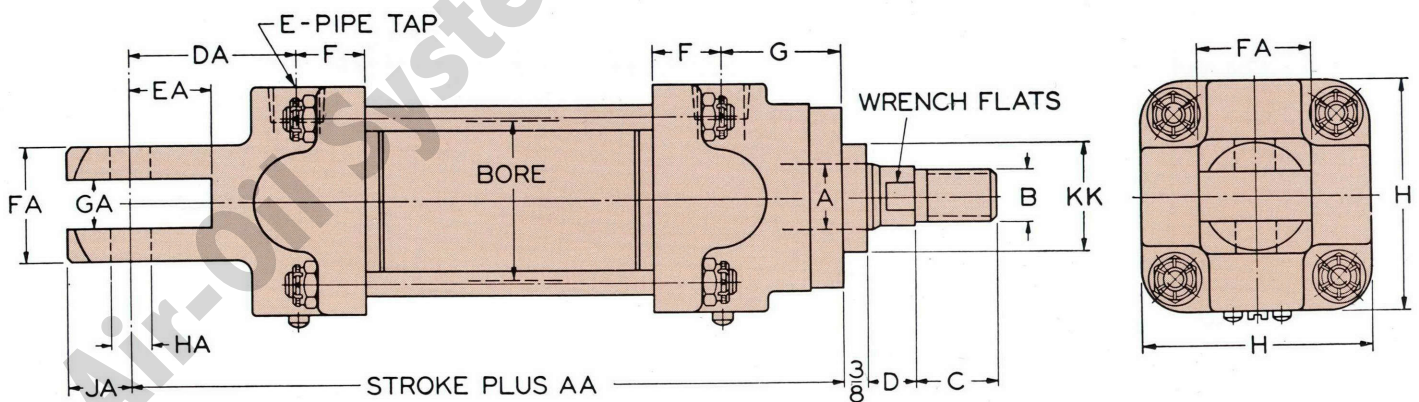
HANNA cylinders

Model T755 — Trunion Mount



BORE	A	B	C	D	E	F	G	H	P	T	KK	NN	PP	QQ	RR	SS	TT	UU	VV	WW
1½	5/8	7/16-20	5/8	5/8	3/8	15/16	1 1/16	2½	1¼	5 15/16	1¼	4	2¾	5/8	7/8	5/8	0	3	1	1/16
2	¾	½-20	7/8	¾	3/8	1	1 13/16	3	1 1/16	6 3/8	1 3/8	5	3¼	7/8	1 1/8	7/8	1/8	3 7/16	1¼	1/16
2½	1	¾-16	1¼	¾	3/8	1 1/16	1 7/8	3½	1½	6 5/8	1 5/8	5¾	3¾	1	1 3/8	1	3/8	3 11/16	1½	1/16
3	1	¾-16	1¼	¾	3/8	1 3/16	1 7/8	4¼	1½	6 7/8	1 5/8	7	4½	1¼	1 5/8	1¼	5/8	3 15/16	1¼	1/16
4	1½	1-14	1¾	7/8	3/8	1¼	2 5/8	5¼	2 1/2	8½	2 1/2	8¾	5¾	1½	2	1½	1	5	2¼	1/8

Model T761 — Clevis Mount



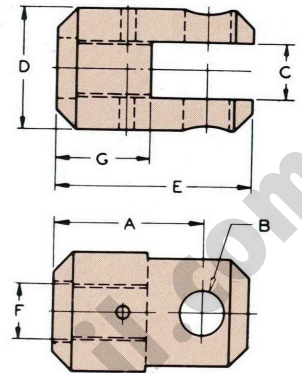
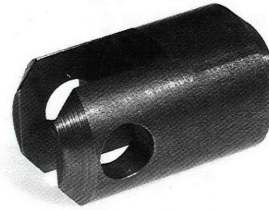
BORE	A	B	C	D	E	F	G	H	AA	KK	DA	EA	FA	GA	HA	JA
1½	5/8	7/16-20	5/8	5/8	3/8	15/16	1 1/16	2½	6 3/4	1¼	2 1/16	1 5/16	1¼	7/16	3/8	5/8
2	¾	½-20	7/8	¾	3/8	1	1 13/16	3	7 7/16	1 3/8	2 1/2	1 1/8	1½	1/2	1/2	¾
2½	1	¾-16	1¼	¾	3/8	1 1/16	1 7/8	3½	7 11/16	1 5/8	2 5/16	1¼	1¾	¾	5/8	1
3	1	¾-16	1¼	¾	3/8	1 3/16	1 7/8	4¼	7 13/16	1 5/8	2 7/16	1¼	1¾	¾	5/8	1
4	1½	1-14	1¾	7/8	3/8	1¼	2 5/8	5¼	10 5/8	2 1/2	3¾	1 5/8	2¾	1	7/8	1 5/8

Options

Rod Clevis

The rod clevis attaches to the piston rod of Series T750 cylinders. Clevis pins are also available.

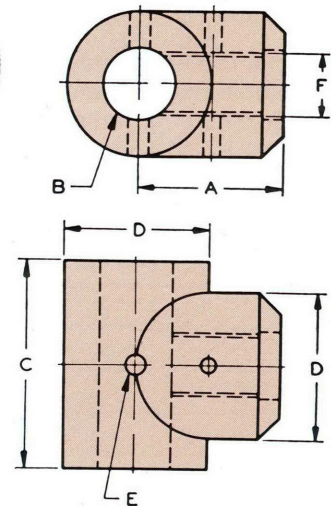
BORE	ITEM NO.	A	B	C	D	E	F	G
1½	V15	1½	¾	⅞	1	1½	⅞-20	¾
2	V20	1½	½	½	1¼	2	½-20	⅞
2½	V25	2	⅝	¾	1⅞	2⅝	¾-16	1¼
3	V30	2	⅝	¾	1⅞	2⅝	¾-16	1¼
4	V40	3	⅞	1	2½	4	1-14	1¼



Rod Eye

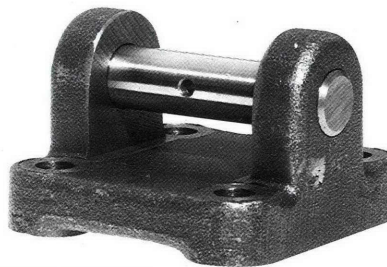
The rod eye attaches to the piston rod of Series T750 cylinders. May be used with or without mounting bracket.

BORE	ITEM NO.	A	B	C	D	E	F
1½	Y15	1	½	1½	1	⅞	⅞-20
2	Y20	1¼	⅝	1¾	1¼	⅞	½-20
2½	Y25	1¾	¾	2¼	1½	¾	¾-16
3	Y30	1¾	⅞	2½	1¾	¾	¾-16
4	Y40	2⅝	1	3	2	⅞	1-14

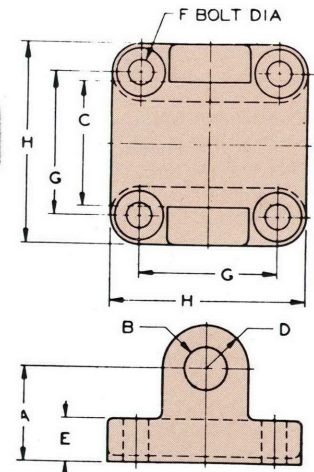


Mounting Bracket

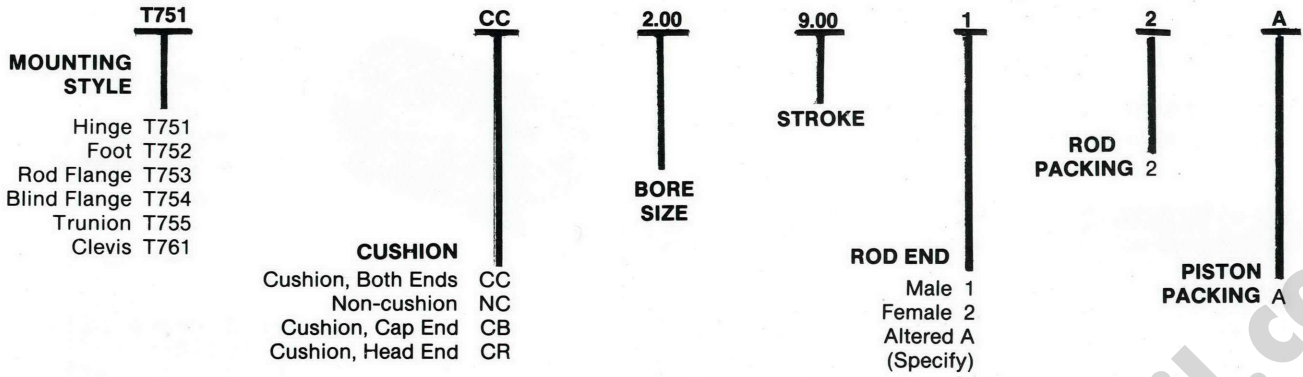
The mounting bracket fits the back head of the hinge mount cylinder. It may also be used on the rod end of any cylinder equipped with a rod eye. Comes complete with pin.



BORE	ITEM NO.	A	B	C	D	E	F	G	H
1½	B15	1½	½	1½	½	½	15/16	1¼	2½
2	B20	1⅞	⅝	1¾	⅝	⅝	¾	2⅞	3
2½	B25	1⅞	¾	2¼	¾	¾	7/16	2½	3½
3	B30	1⅞	⅞	2½	⅞	⅞	½	2⅞	4
4	B40	2¼	1	3	1	1	⅝	3½	5



How to Order

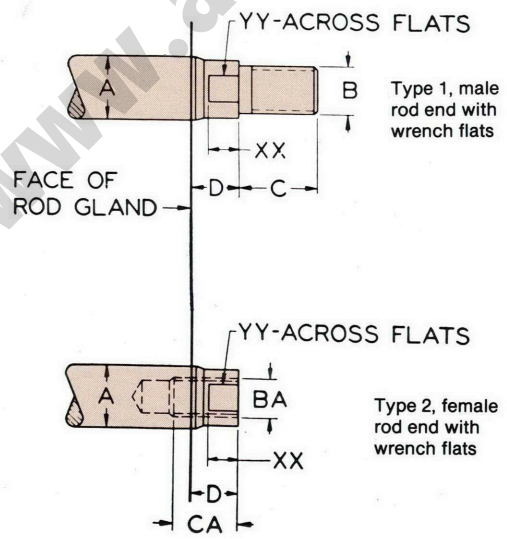


Rod End Dimensions

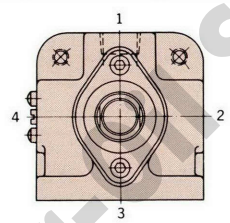
The two piston rod ends illustrated and dimensioned are standard. Rod End type 1 will be furnished on all cylinders unless otherwise specified. Type 2 is optional at no extra charge.

Special rod ends and rod extensions can be made to suit your individual requirements. Wrench flats as illustrated are standard, and facilitate mounting of the cylinder.

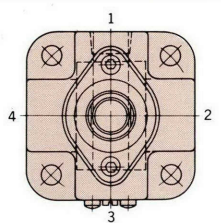
BORE	A	B	C	D	BA	CA	XX	YY
1½	5/8	7/16-20	5/8	5/8	3/8-24	1/2	3/8	1/2
2	3/4	1/2-20	7/8	3/4	7/16-20	3/4	1/2	9/16
2½	1	3/4-16	1¼	3/4	5/8-18	1	1/2	19/16
3	1	3/4-16	1¼	3/4	5/8-18	1	1/2	19/16
4	1½	1-14	1¾	7/8	1-14	1½	5/8	1¼



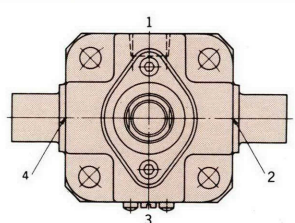
Pipe Port and Cushion Needle Adjustment Locations



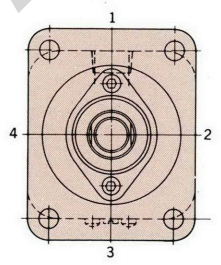
STANDARD LOCATION
 PIPE PORT AT 1
 CUSHION NEEDLE AT 4
MODEL 752 & 752CC



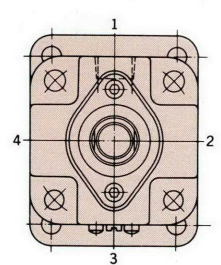
STANDARD LOCATION
 PIPE PORT AT 1
 CUSHION NEEDLE AT 3
MODEL 751 & 751CC



STANDARD LOCATION
 PIPE PORT AT 1
 CUSHION NEEDLE AT 3
MODEL 755 & 755CC



STANDARD LOCATION
 PIPE PORT AT 1
 CUSHION NEEDLE AT 3
MODEL 753 & 753CC

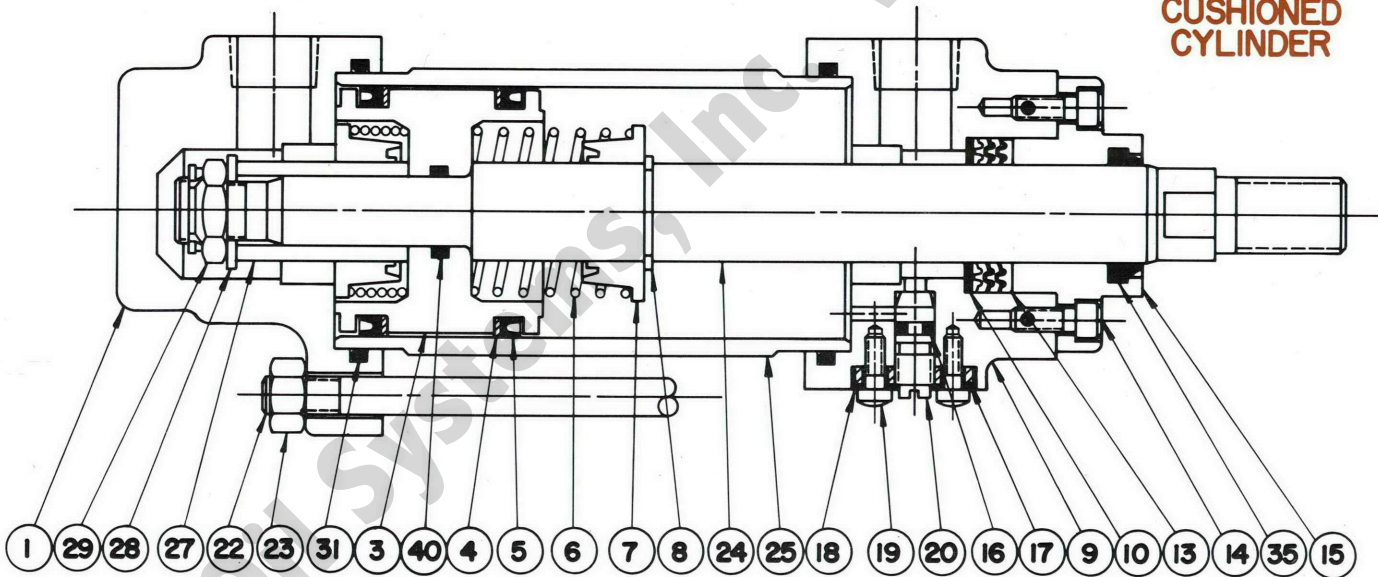
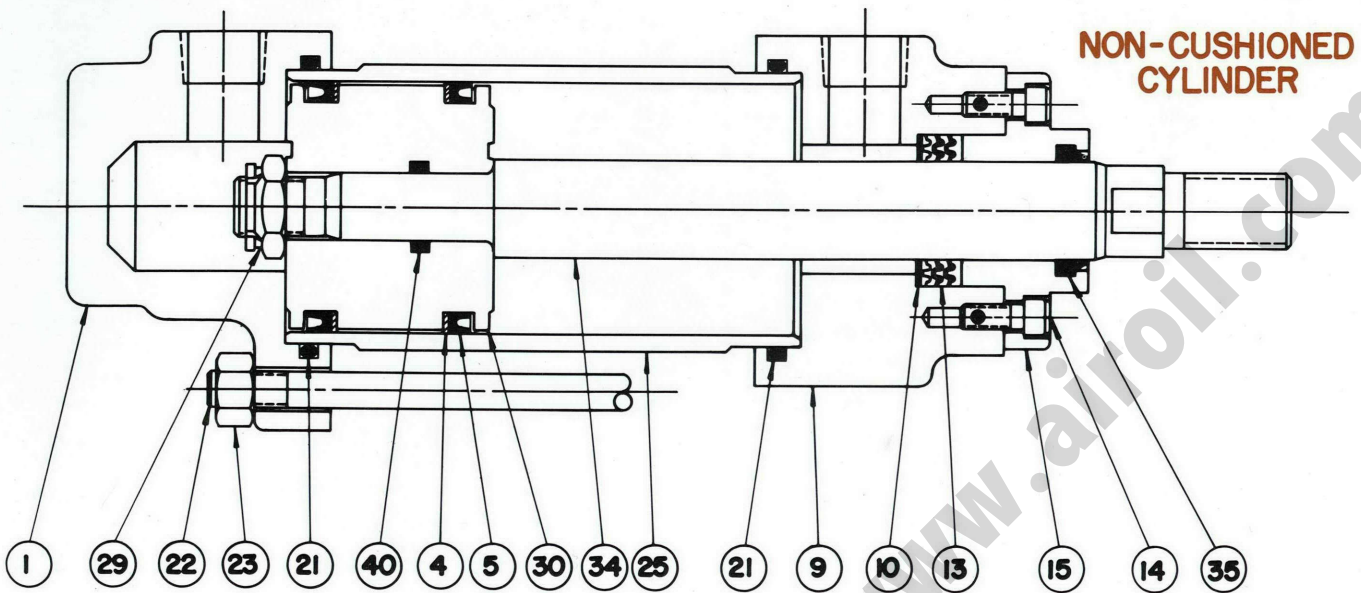


STANDARD LOCATION
 PIPE PORT AT 1
 CUSHION NEEDLE AT 3
MODEL 754 & 754CC

Series T750 Cylinders Parts List

When ordering, please give Cylinder Serial Number, Parts List Page Number and Date, and Part Number. If Serial

Number is not available, please indicate Model Number, Bore, Stroke and Rod Diameter.

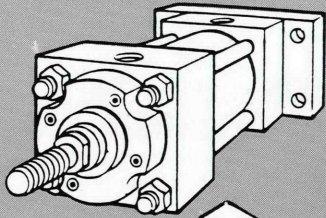


Item No.	Description
1	Back Head
3	Piston (Cushioned)
4	Back-up Washer
5	Piston Packing
6	Cushion Spring
7	Cushion Valve
8	Cushion Retaining Ring
9	Front Head
10	Packing Washer
13	Rod Packing Set
14	Screw
15	Gland
16	Cushion Needle O-Ring
17	Cushion Needle Retainer
18	Cushion Plate
19	Retaining Screw

Item No.	Description
20	Cushion Needle
21	Head O-Ring
22	Tie Rod
23	Tie Rod Nut
24	Piston Rod (Cushioned)
25	Tube
27	Cushion Valve Sleeve
28	Cushion Retainer Washer
29	Piston Rod Nut
30	Piston (Non-Cushioned)
34	Piston Rod (Non-Cushioned)
35	Rod Wiper
40	Piston O-Ring
45	Piston Kit C (Not Shown)
46	Gland Kit (Not Shown)

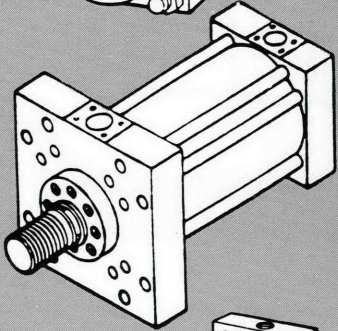
HANNA FLUID POWER PRODUCTS

Hydraulic Cylinders



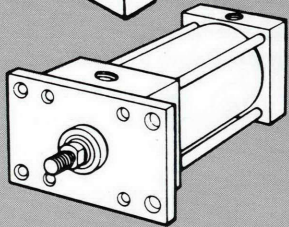
Series 2H

Heavy-duty (3000 p.s.i.) hydraulic cylinders. 22 NFPA mounting styles. 1.50" through 14.00" bores.



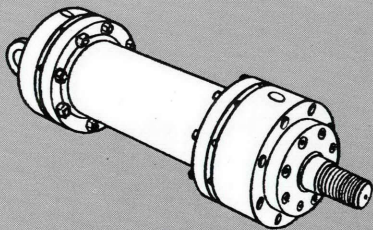
Series 3H

Heavy-duty (3000 p.s.i.) large bore cylinders (10.00" through 24.00"). 7 mounting styles.



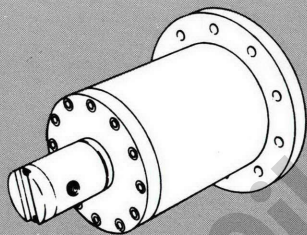
Series 3L

Medium-duty (1800 p.s.i.) hydraulic cylinders. 24 NFPA mounting styles. 1.50" through 6.00" bores.



Mill Cylinders

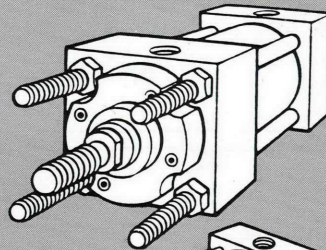
Extra-rugged, heavy-duty (2000 p.s.i.). 7 mounting styles, 2.00" through 16.00" bores.



Rotating Cylinders

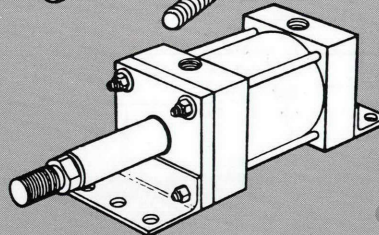
Hydraulic service to 1500 p.s.i., 500 RPM. Flush or flange mounts. Bore sizes from 4.50" through 16.00".

Pneumatic Cylinders



Series 3A and 3AN

For air service to 250 p.s.i., 20 NFPA mounting styles. 1.50" through 14.00" bores. Specify 3AN for non-lube service.



Series CA

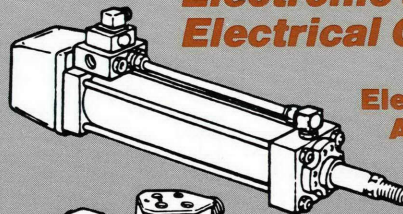
Composite air cylinders for corrosive environment service to 150 p.s.i. 11 NFPA mounting styles, 1.50" thru 6.00" bores. Available to meet AWWA specifications.

Custom-Welded Cylinders

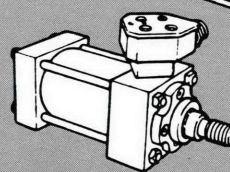
For a wide range of mobile, marine and industrial applications. Standard bore sizes through 12.00"; specials through 30.00" bores—strokes to 25' and beyond.



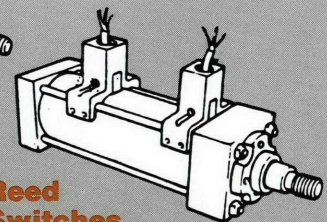
Electronic and Electrical Controls



Electronic Feedback Actuator System



Proximity Switches



Reed Switches

Professional Application Assistance—Local Service

Hanna brand hydraulic and pneumatic cylinders are applied, sold and serviced only by highly qualified, factory-trained fluid power sales engineers. There are

over 40 Hanna distributors in North America, with more than 70 stocking locations to respond quickly to your local sales and service needs.

HANNA
cylinders

1765 North Elston Avenue
Chicago, Illinois 60622
Phone: 773-384-7000
Fax: 773-384-5224
E-mail: Hanna215@msn.com
Website: www.hannacylinders.com



National
FLUID POWER
Association

MEMBER

Printed in U.S.A.
1M 3/00