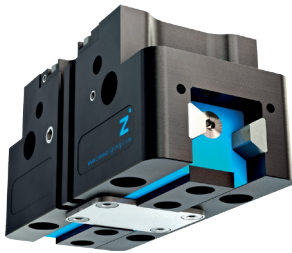


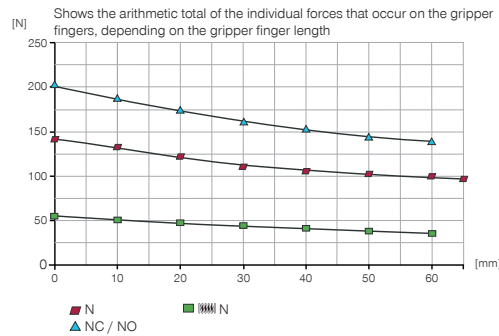
2-JAW PARALLEL GRIPPERS

INSTALLATION SIZE GPP5003

▶ PRODUCT SPECIFICATIONS

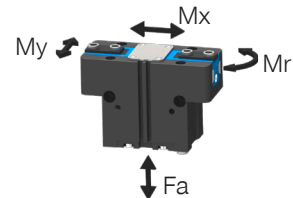


▶ Gripping force diagram



▶ Forces and moments

Displays static forces and moments that can also have an effect, besides the gripping force.



Mr [Nm]	7
Mx [Nm]	14
My [Nm]	13
Fa [N]	550

▶ TECHNICAL DATA

▶ Technical Data*

Order no.	GPP5003N-00-A	GPP5003NC-00-A	GPP5003NO-00-A
Stroke per jaw [mm]	2.5	2.5	2.5
Gripping force in closing [N]	140	195	
Gripping force in opening [N]	150	150	205
Gripping force secured by spring min. [N]		55	55
Closing time [s]	0.01	0.01	0.025
Opening time [s]	0.01	0.025	0.01
Permissible weight per jaw max [kg]	0.12	0.12	0.12
Length of the gripper fingers max. [mm]	65	60	60
Repetition accuracy +/- [mm]	0.01	0.01	0.01
Operating pressure min. [bar]	3	4	4
Operating pressure max. [bar]	8	7	7
Operating temperature [°C]	-10 ... +90	-10 ... +90	-10 ... +90
Air volume per cycle [cm³]	2.1	4.8	4.8
Protection to IEC 60529	IP64	IP64	IP64
Weight [kg]	0.08	0.1	0.1

▶ Technical Data - Protector Version

Order no.	GPP5003N-21-A	GPP5003NC-21-A	GPP5003NO-21-A
Protection to IEC 60529	IP67**	IP67**	IP67**
Weight [kg]	0.1	0.12	0.12

▶ Technical Data - High Temperature Version

Order no.	GPP5003N-20-A	GPP5003NC-20-A	GPP5003NO-20-A
Operating temperature [°C]	-10 ... +130	-10 ... +130	-10 ... +130

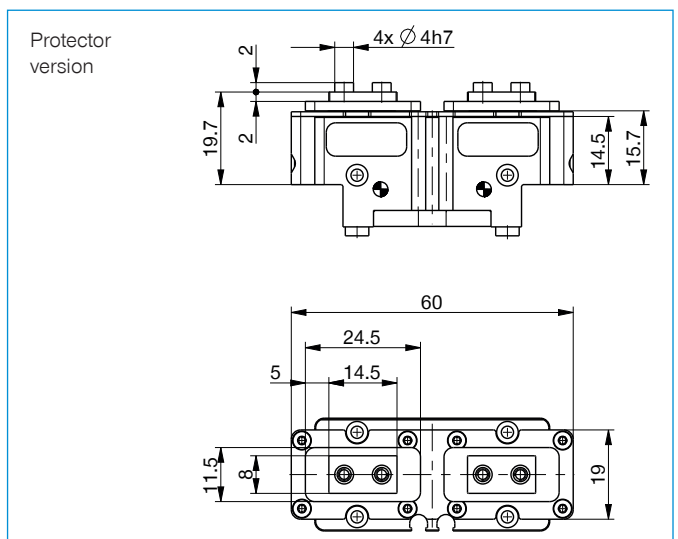
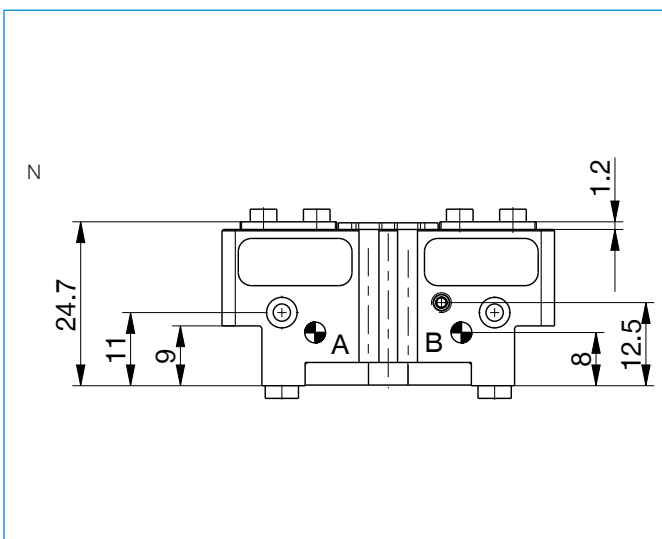
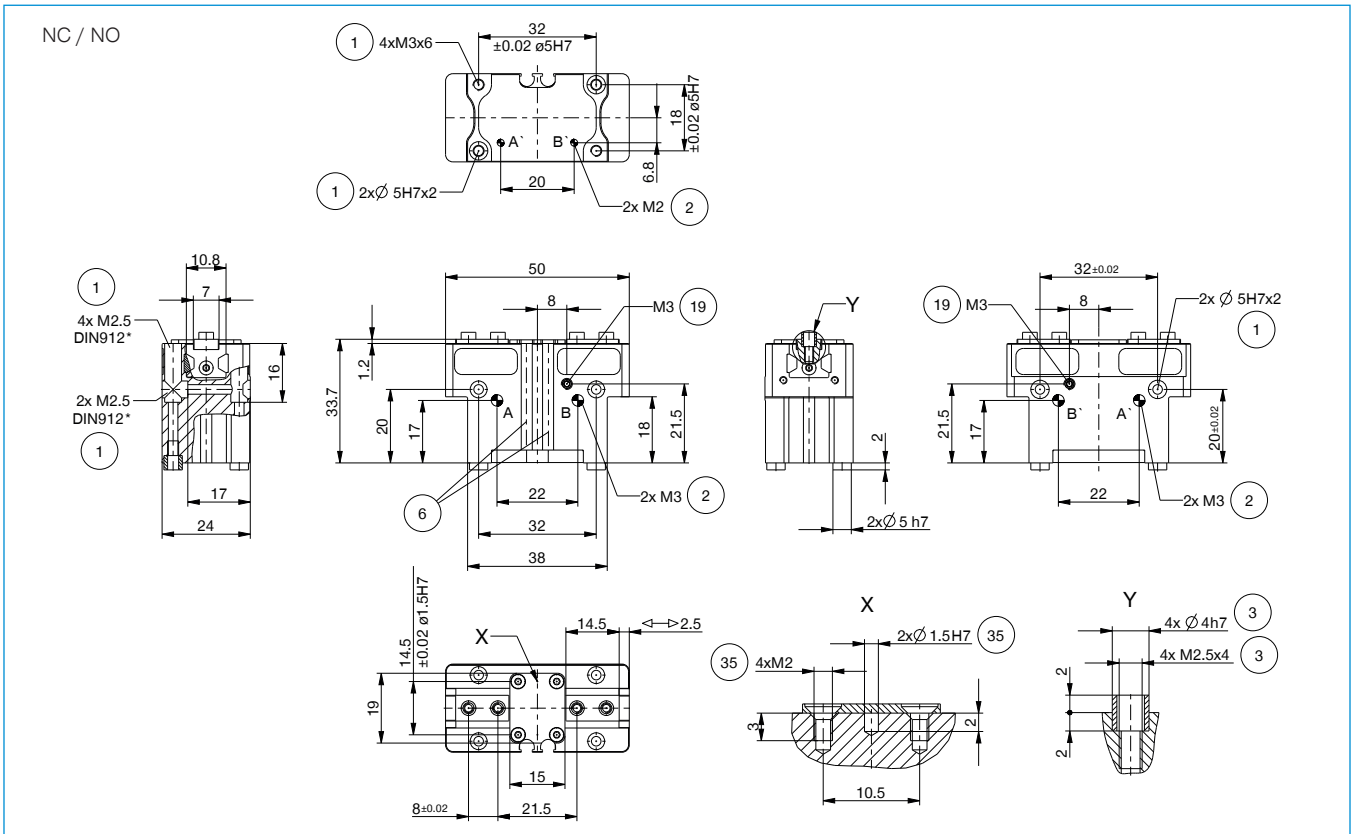
▶ Technical Data - High Temperature Protector Version

Order no.	GPP5003N-24-A	GPP5003NC-24-A	GPP5003NO-24-A
Operating temperature [°C]	-10 ... +130	-10 ... +130	-10 ... +130
Protection to IEC 60529	IP67**	IP67**	IP67**
Weight [kg]	0.1	0.12	0.12

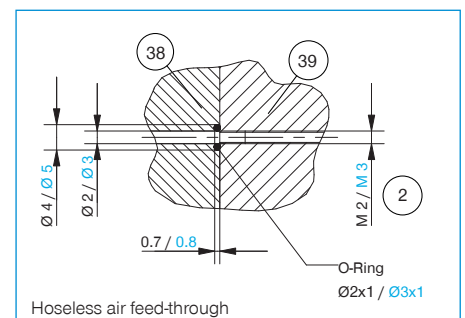
*All data measured at 6 bar

** with purged air (max. 0,5 bar)

TECHNICAL DRAWINGS

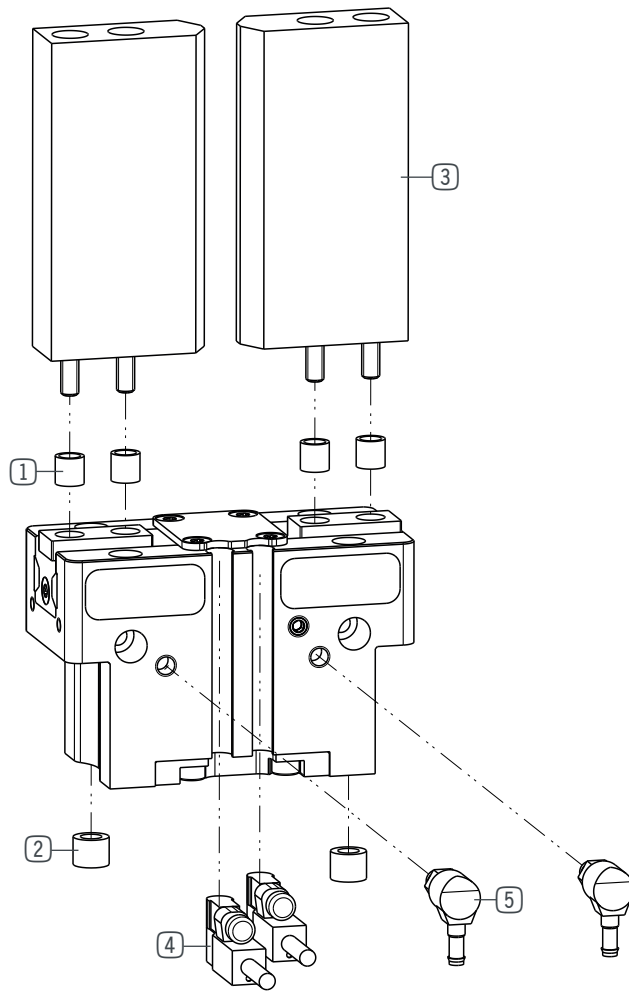


- | | |
|-----------------------------------------------------|---------------------------------------|
| ① Gripper attachment | ③⑧ Adapter |
| ② Energy supply | ③⑨ Gripper |
| ③ Fixing for gripper finger | Ⓐ Air connection (close) |
| ⑥ Integrated slot for magnetic field sensor | Ⓑ Air connection (open) |
| ⑱ Air purge connection option | Ⓐ Air connection, alternative (close) |
| ③⑤ Attachment option for customer-specific fittings | Ⓑ Air connection, alternative (open) |



2-JAW PARALLEL GRIPPERS

INSTALLATION SIZE GPP5003



▶ INCLUDED IN DELIVERY



Centering Disc

DST06510



Centering Disc

015761

▶ RECOMMENDED ACCESSORIES



Universal jaw aluminium

UB5003AL



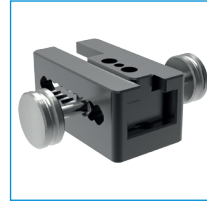
Universal jaw steel

UB5003ST



Rubber Coated Tape
Knobbed

KF50N



Aluminum adjustment jaw

EB5003AL



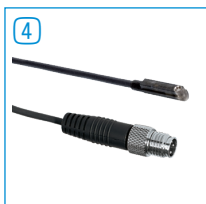
Steel adjustment jaw

EB5003ST



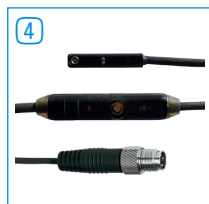
Magnetic field sensor Angled
Cable 0,3 m - Connector M8

MFS103SKHC



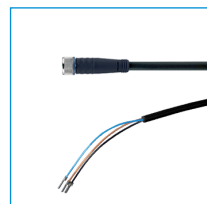
Magnetic field sensor Straight
Cable 0,3 m - Connector M8

MFS204SKHC



2-Position-Sensor Cable
0,3 m - Connector M8

MFSP2SKHC-02



Plug-in connector Straight Ca-
ble 5m - Socket M8 (female)

KAG500



Plug-in connector customiz-
able Straight - Connector M8

S8-G-3



Plug-in connector customiz-
able Straight - Connector M12

S12-G-3



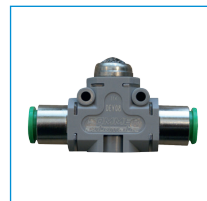
Straight Fittings - Barb
Style Connection

GVM3



Angled Fittings - Barb
Style Connection

WVM3



Quick Exhaust Valve

DEV04



Pressure Safety Valve

DSV1-8

▶ TECHNICAL DRAWINGS ACCESSORIES

One universal jaw is required for each gripper jaw ³

