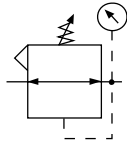
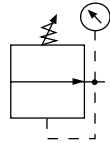


# Regulator R12

= "Most Popular"



Relieving



Non-Relieving



**R12-02-F000**

## Features

- Secondary Aspiration Plus Balanced Valve Provides Quick Response and Accurate Pressure Regulation
- Rolling Diaphragm for Extended Life
- Removable Non-rising Knob for Panel Mounting and Tamper Resistance
- Easily Serviced
- Reverse Flow

## Specifications

Flow Capacity*	1/4	30 SCFM (14.2 dm <sup>3</sup> /s)
	3/8	40 SCFM (18.9 dm <sup>3</sup> /s)
Adjusting Range Pressure	1 to 30 PSIG (0.06 to 2.1 bar)	
	1 to 60 PSIG (0.06 to 4.1 bar)	
	2 to 125 PSIG (0.13 to 8.6 bar)	
	2 to 200 PSIG (0.13 to 13.7 bar)	
Gauge Ports (2x)	NPT / BSPP-G	1/4
Maximum Supply Pressure	250 PSIG (17.2 bar)	
Operating Temperature	32° to 175°F (0° to 80°C)	
Port Size	NPT / BSPP-G	1/4, 3/8
Weight	lb. (kg)	1.1 (0.49)

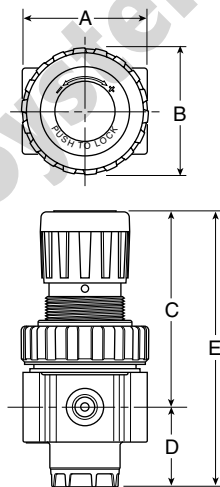
\* Inlet pressure 100 PSIG (6.9 bar), no flow secondary pressure set 90 PSIG (6.2 bar), 10 PSIG pressure drop at rated flow.

## Materials of Construction

Adjustment Stem	Brass
Body	Zinc
Bonnet	Plastic
Collar & Knob	Plastic
Diaphragm Assembly	Nitrile
Seals	Nitrile
Springs	Valve & Control Steel
Valve & Cap	Plastic

### WARNING

**Product rupture can cause serious injury.  
Do not connect regulator to bottled gas.  
Do not exceed maximum primary pressure rating.**



- NOTE: Panel Mount Nut sold separately.**  
**NOTE: 1.53" Dia. (39 mm) hole required for panel nut mounting.**

## CAUTION:

**REGULATOR PRESSURE ADJUSTMENT** – The working range of knob adjustment is designed to permit outlet pressures within their full range. Pressure adjustment beyond this range is also possible because the knob is not a limiting device. This is a common characteristic of most industrial regulators, and limiting devices may be obtained only by special design.

For best performance, regulated pressure should always be set by increasing the pressure up to the desired setting.

## Dimensions

Model	Inches (mm)	A	B	C	D	E
Standard Unit R12-XX-F000		2.00 (51)	2.06 (52)	3.16 (80)	1.28 (32)	4.44 (113)

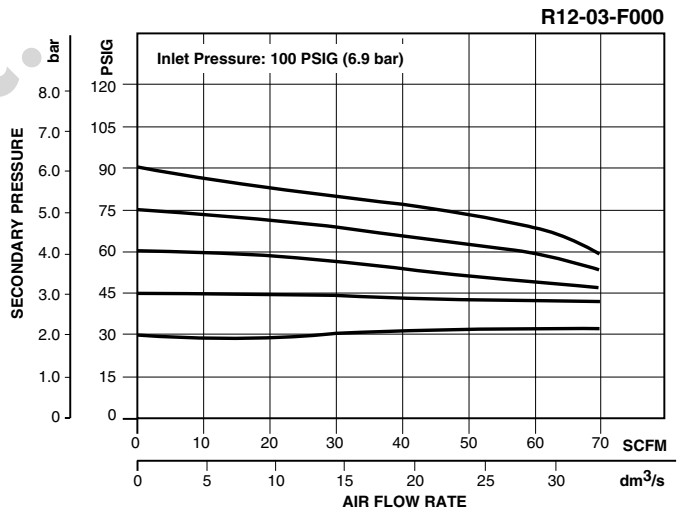
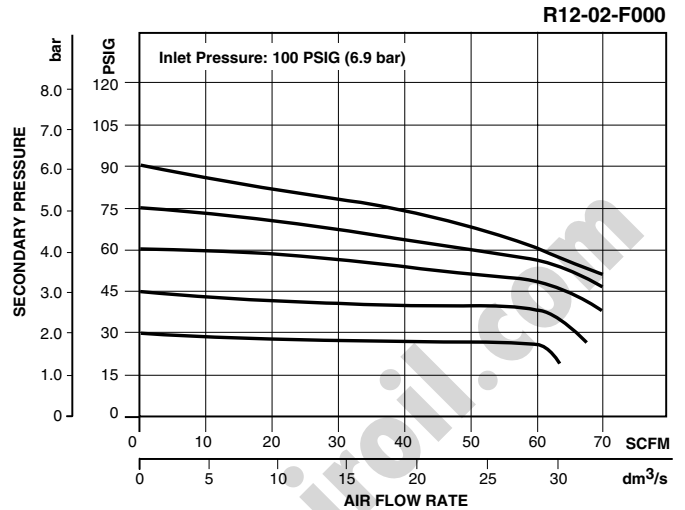
= "Most Popular"

### Replacement Kits

- Bonnet Assembly Kit ..... RRP-96-308
- Control Knob ..... RRP-96-300
- Pressure Gauge -
  - 30 PSIG ..... K4515N14030
  - 60 PSIG ..... K4515N14060
  - 160 PSIG ..... K4515N14160
  - 300 PSIG ..... K4515N14300
- Service Kit –
  - Non-relieving ..... RRP-96-307
  - Relieving ..... RRP-96-306
- Springs, Regulating –
  - 1 to 30 PSIG (0.06 to 2.1 bar) ..... RRP-96-303
  - 1 to 60 PSIG (0.06 to 4.1 bar) ..... RRP-96-302
  - 2 to 125 PSIG (0.13 to 8.6 bar) ..... RRP-96-301
  - 2 to 200 PSIG (0.13 to 17.2 bar) ..... RRP-96-304

### Accessories

- Mounting Bracket Kit (With Panel Mount Nut) ..... GPA-96-313
- Panel Mount Nut, Metal ..... GPA-96-314



### Ordering Information

Model Type	Port Size	With Gauge 2 to 125 PSIG (0.13 to 8.6 bar)	Without Gauge 2 to 125 PSIG (0.13 to 8.6 bar)
Relieving	1/4	R12-02-F0G0	R12-02-F000
	3/8	R12-03-F0G0	R12-03-F000
Non-relieving	1/4	R12-02-R0G0	R12-02-R000
	3/8	R12-03-R0G0	R12-03-R000

**Options** - To order an option supplied with the unit model, add the appropriate coded suffix letter in the designated position of the model number.

B