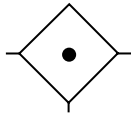
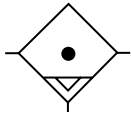


Coalescing Filter M12

= "Most Popular"



Coalescing Filter



Auto Drain



M12-02-CK00

Features

- Removes Liquid Aerosols and Sub-micron Particles
- Liquids Gravitate to the Bottom of the Element and Will Not Re-enter the Airstream
- Oil Free Air for Critical Applications, such as Air Gauging and Pneumatic Instrumentation and Controls
- Interchangeable Manual and Piston Drains
- Differential Pressure Indicator Standard

Specifications

High Flow Capacity*	Port Size	"C" Element	"B" Element
	1/4	30 SCFM	50 SCFM
	3/8	30 SCFM	65 SCFM
Maximum Supply Pressure			
Without DPI	Plastic Bowl	150 PSIG (10.3 bar)	
	Metal Bowl	250 PSIG (17.2 bar)	
With DPI		150 PSIG (10.3 bar)	
With Piston Drain		150 PSIG (10.3 bar)	
Operating Temperature			
Without DPI	Plastic Bowl	32° to 125°F (0° to 52°C)	
	Metal Bowl	32° to 175°F (0° to 80°C)	
With DPI		32° to 125°F (0° to 52°C)	
With Piston Drain		32° to 125°F (0° to 52°C)	
Port Size	NPT / BSPP-G	1/4, 3/8	
Standard Filtration	Micron	(C) 0.01 (B) 0.7	
Useful Retention **	oz. (cc)	.9 (26.6)	
Weight	lb. (kg)	1.2 (0.54)	

* Inlet pressure 90 psig (6.2 bar) and 5 psig (0.3 bar) pressure drop.

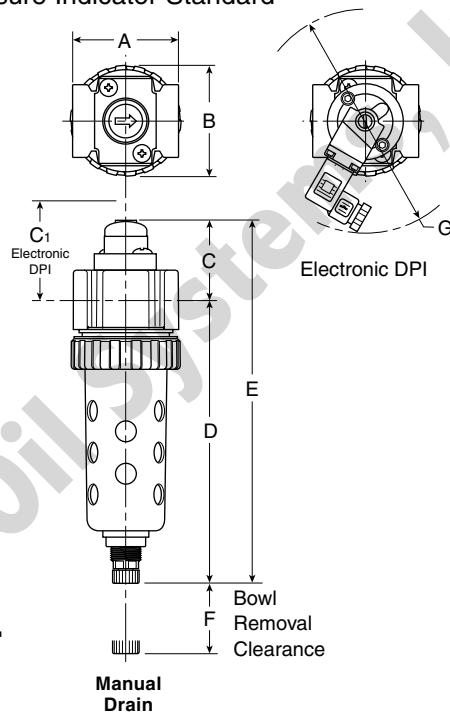
** Useful Retention refers to volume below the quiet zone baffle.

"M12" Series Coalescing Filters, with Type "B" 0.7 micron elements: Wilkerson Type "M12" Oil Removal (Coalescing) Filters with Type "B" 0.7 micron elements **exceed ISO Class 2** for maximum particle size and concentration of solid contaminants, and exceed Class 3 on maximum oil content (ppm/wt).

"M" Series Coalescing Filters, with Type "C" 0.01 micron elements: All Wilkerson Type "M" Oil Removal (Coalescing) Filters with Type "C" 0.01 micron elements **exceed ISO Class 1** for maximum particle size and concentration of solid contaminants, and exceed Class 1 on maximum oil content (ppm/wt).

Materials of Construction

Body	Zinc	
Bowls	Plastic Bowl	Polycarbonate
	Metal Bowl	Zinc
Drain	Plastic	
Element Holder	Acetal	
Filter Element	Type "B", "C"	Borosilicate & Felt Glass Fibers
Seals	Nitrile	
Sight Gauge DPI	Polyamide (Nylon)	



NOTE: Barb (Piston Drain) accepts 3/16" ID tubing.

Dimensions

Models	Inches (mm)	A	B	C	C ₁	D [†]	E [†]	F	G
Standard Unit M12-XX-CK00		2.00 (51)	2.06 (52)	1.50 (38)	1.86 (47)	5.35 (136)	6.85 (174)	1.77 (45)	4.50 (114)

[†] With Manual or Piston Drain

= "Most Popular"

Replacement Bowl Kits

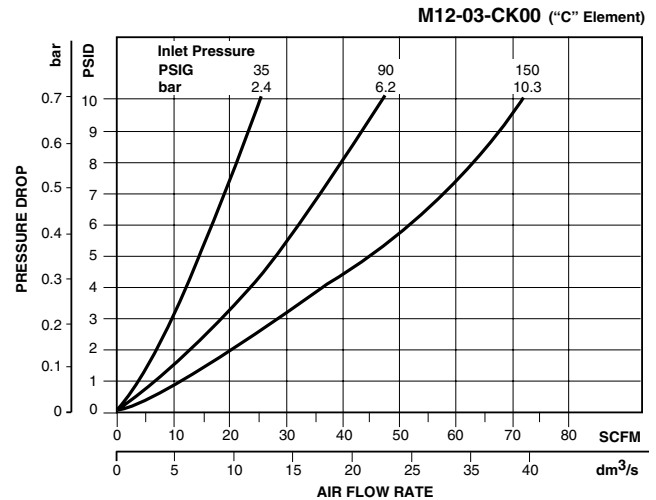
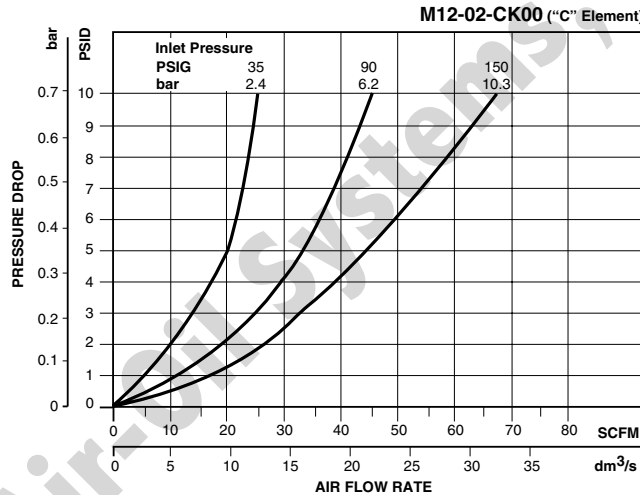
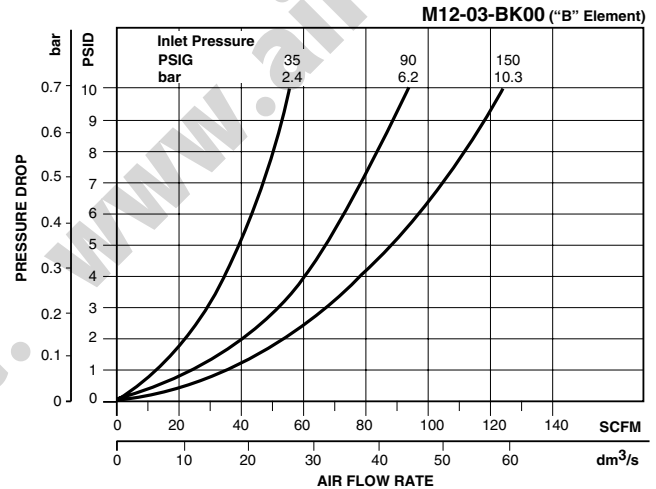
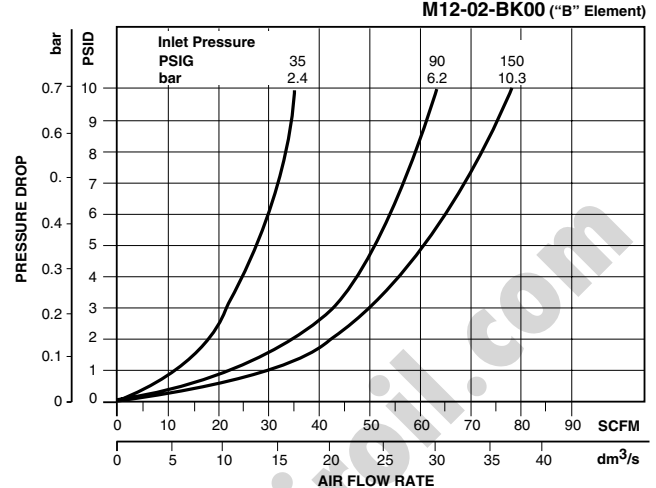
- Metal Bowl Guard GRP-96-345
- Metal Bowl –
 - Manual Drain GRP-96-348
 - Piston Drain GRP-96-353
 - Sight Gauge / Manual Drain GRP-96-349
 - Sight Gauge / Piston Drain GRP-96-352
- Plastic Bowl –
 - Manual Drain GRP-96-347
 - Piston Drain GRP-96-351

Replacement Element Kits

- Type "B", 0.7 Micron (Optional) MRP-96-301
- Type "C", 0.01 Micron (Standard) MRP-96-300

Accessories

- DPI Replacement Kit FRP-96-300
- Drain Kit –
 - Manual Drain GRP-96-340
 - Piston Drain GRP-96-354
- Electronic DPI Kit PS764
- Mounting Bracket Kit GPA-96-300
- Sight Gauge Kit GRP-96-346



Ordering Information

Model Type	Port Size	Plastic Bowl / Bowl Guard	Metal Bowl / Sight Gauge
Manual Drain	1/4	M12-02-CK00	M12-02-CL00
	3/8	M12-03-CK00	M12-03-CL00
Automatic Piston Drain	1/4	M12-02-CR00	M12-02-CS00
	3/8	M12-03-CR00	M12-03-CS00

Options - To order an option supplied with the unit model, add the appropriate coded suffix letter in the designated position of the model number.

B