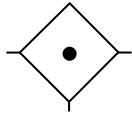


# Coalescing Filter

## M39

= "Most Popular"



Coalescing Filter



**M39-08-CL00**

### Features

- High-efficiency Removal of Water, Oil Aerosols, and Solid Particulate Contaminants Down to 0.01 ppm/wt with Minimum Pressure Drop
- Modern Design and Appearance
- Pressure Differential Indicator Standard
- 3/4" and 1" NPT Ports
- High Flow Capacity
- Quick-disconnect Bowl
- Port Blocks for BSPP Thread and 1-1/2" Port

### Specifications

Flow Capacity*	3/4	115 SCFM (54 dm <sup>3</sup> /s)
	1	120 SCFM (57 dm <sup>3</sup> /s)
Maximum Supply Pressure	Metal Bowl 250 PSIG (17 bar)	
Operating Temperature	32° to 175°F (0° to 80°C)	
Port Size	NPT	3/4, 1
Standard Filtration	Micron	(B) 0.5, (C) 0.01
Useful Retention**	oz. (cm <sup>3</sup> )	2.89 (84.9)
Weight	lb. (kg)	3.5 (1.6)

\* Inlet pressure 101.5 PSIG (7 bar). Pressure drop 3 PSID (0.2 bar).

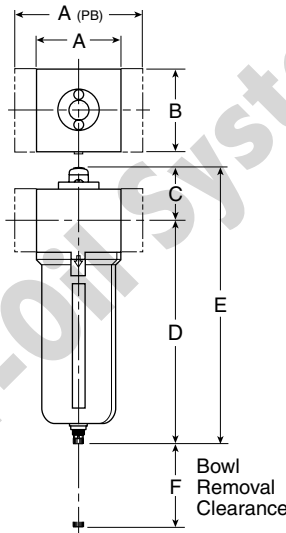
\*\* Useful retention refers to useable bowl capacity below the element.

**"M39" Series Coalescing Filters, with Type "B" 0.7 micron elements:** Wilkerson Type "M39" Oil Removal (Coalescing) Filters with Type "B" 0.7 micron elements **exceed ISO Class 2** for maximum particle size and concentration of solid contaminants, and exceed Class 3 on maximum oil content (ppm/wt).

**"M" Series Coalescing Filters, with Type "C" 0.01 micron elements:** All Wilkerson Type "M" Oil Removal (Coalescing) Filters with Type "C" 0.01 micron elements **exceed ISO Class 1** for maximum particle size and concentration of solid contaminants, and exceed Class 1 on maximum oil content (ppm/wt).

### Materials of Construction

Body	Aluminum	
Bowls	Aluminum	
Filter Element	Type "B", "C"	Borosilicate & Felt Glass Fibers
Seals	Nitrile	
Sight Gauge	Polyamide (Nylon)	



### Dimensions

Models	Inches (mm)	A	A (PB)	B	C	D†	E†	F
Standard Unit M39-XX-CL00		3.62 (92)	5.91 (150)	3.62 (92)	2.30 (58)	9.57 (243)	11.90 (302)	4.92 (125)

† With Manual Drain or Internal Auto Drain

 = "Most Popular"

### Replacement Bowl Kits

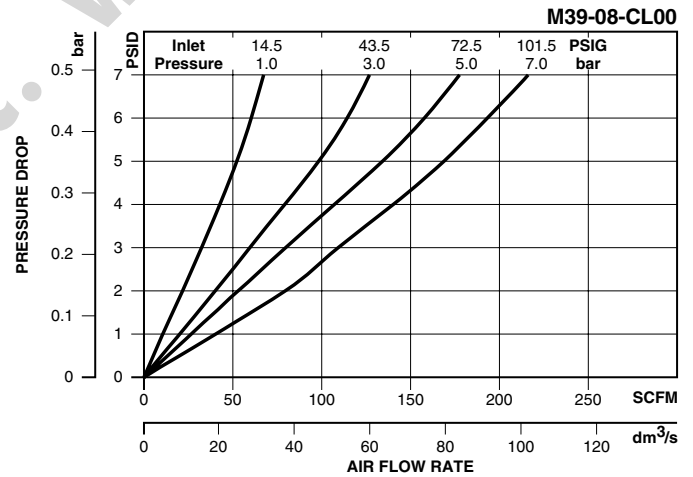
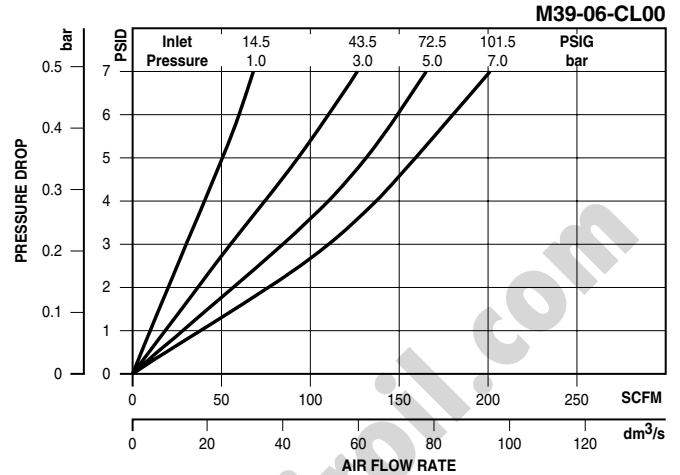
- Metal Bowl –
- Sight Gauge / Internal Auto Drain ..... P3NKA00BSA
- Sight Gauge / Manual Drain.....P3NKA00BSM

### Replacement Element Kits

- Type "B", 0.7 Micron.....P3NKA00ES9
- Type "C", 0.01 Micron..... P3NKA00ESC

### Accessories

- Bowl Latch Kit ..... C11A33
- DPI Replacement Kit ..... PS781
- Drain Kit –
- Internal Auto Drain .....PS506
- Manual Drain ..... PS512
- Mounting Bracket Kit ..... P3NKA00MW
- Sight Gauge Kit .....P3NKA00PE



### Ordering Information

Model Type	Port Size	Metal Bowl / Sight Gauge
Manual Drain	3/4	M39-06-CL00
	1	M39-08-CL00
Automatic Drain	3/4	M39-06-CH00
	1	M39-08-CH00

**Options** - To order an option supplied with the unit model, add the appropriate coded suffix letter in the designated position of the model number.

**B**