

grippers

E Series

Parallel, Angular, Radial and 3 Jaw Grippers



numatics®

Table of Contents

NUMATICS®

Euro-Series Parallel Robotic Gripper	3-13
Features and Benefits, EPG, ETG	3
Features and Benefits, ERG, EAG	4
How To Order	5
Dimensions	6-9
Technical Specifications	10-11
Switch Information	12-13

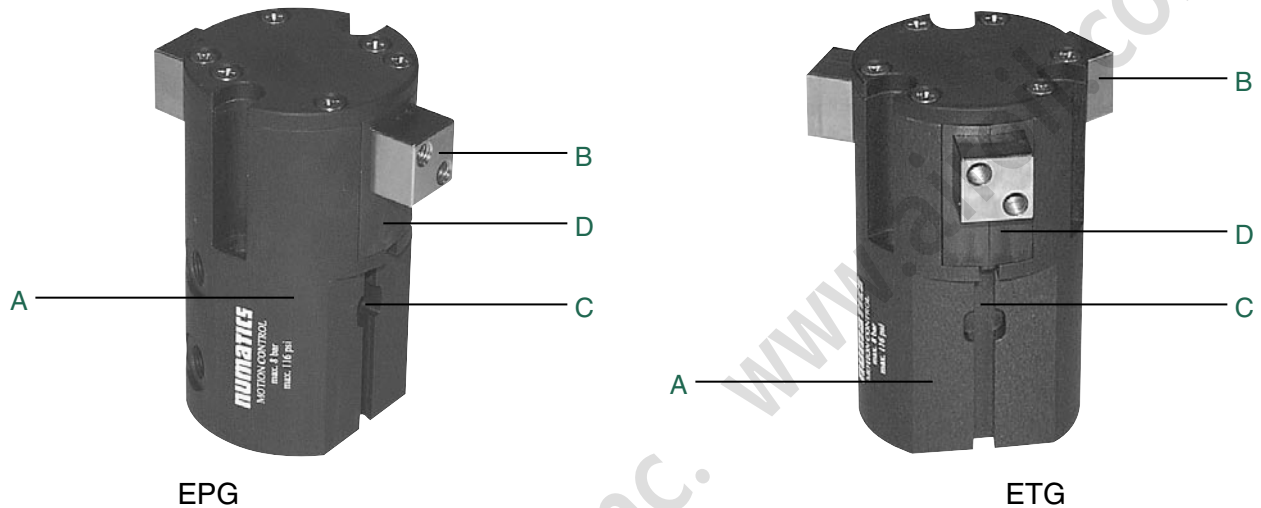
Air-Oil Systems, Inc. www.airoil.com



Euro-Series Parallel Robotic Gripper

Gripper Summary of Operation:

The “EPG” (two jaw) and “ETG” (three jaw) parallel gripper lines utilize a double acting piston and rocker arm design. The piston has a radial groove to which the rocker arm engages. As the piston moves up or down, the rocker arms pivot moving the gripper jaw open or closed. All jaw motions are synchronous.



A. Body

Hardcoat Anodized Teflon impregnated aluminum inside and out.
Round lightweight highly rigid design.
Flexible mounting options with dowel holes and locating boss standard.

B. Stainless steel alloy slides.

High resistance to corrosion.
No external arms, reduced pinch points, OSHA recognized.

C. Dual position sensor mounting tracks and magnetic piston standard on all models.

Easy access, total adjustability, factory or field installed.
Hall effect (NPN, PNP) and AC/DC reed switches.

D. A Polyoxymethylene (POM), or acetal polymer bearing surface, reinforced by MoS₂, standard on all models.

High Resistance to harsh chemicals.
Isolates internal parts from environmental contamination.
Superior Slide Support.



Euro-Series Parallel Robotic Gripper

NUMATICS®

Euro-Series Radial & Angular Robotic Gripper

Gripper Summary of Operation:

Radial “ERG”

The piston rod has multiple gear teeth machined on one end. Each jaw has a pinion gear arrangement which engages the piston rack. As the piston moves up and down, the pinion arrangement rotates the radial jaws open and closed.

Angular “EAG”

Like the parallel grippers, the double acting piston has a radial groove to which the same rocker arm engages. As the piston moves up and down, the rocker pivots moving the gripper jaws in an angular motion open and close.



ERG



EAG

A. Body

Hardcoat Anodized Teflon impregnated aluminum inside and out.
Round lightweight highly rigid design.
Flexible mounting options with dowel holes and locating boss standard.

B. Jaws

Hardcoat Anodized Teflon impregnated aluminum
Lightweight, Durable, high strength
Each jaw travels 2 degrees beyond center.

C. Dual position sensor mounting tracks and magnetic piston standard on all models.

Easy access, total adjustability, factory or field installed.
Hall effect (NPN, PNP) and AC/DC reed switches.

D. A Polyoxymethylene (POM), or acetal polymer bearing surface, reinforced by MoS₂. standard on all models.

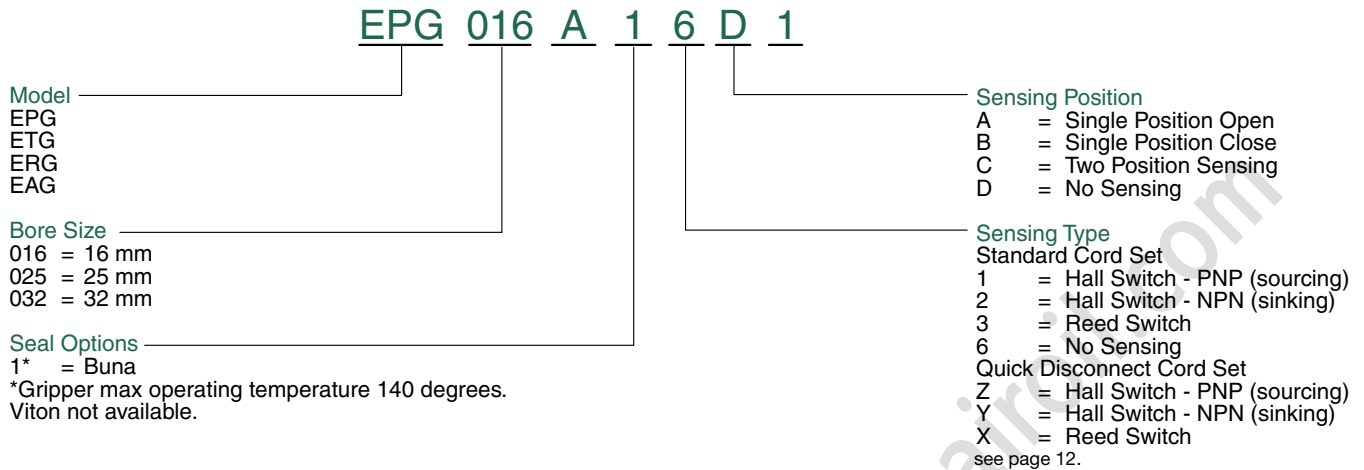
High Resistance to harsh chemicals.
Isolates internal parts from environmental contamination.
Superior jaw support.

E. Stainless steel alloy pivot pins

Reduced friction, low wear, increased service life.



How to Order



Example order:

Part Number: EPG016A16D1*
Part Description: 2 jaw parallel with 16 mm bore, standard buna seals no sensing.

*When entering an order, DO NOT use spaces or dashes. Follow example above.

When ordering additional seal kits:

SEAL KIT SERIES	BUNA SEAL KIT
All 16mm Bore Models	ESKB-016
All 25mm Bore Models	ESKB-025
All 32mm Bore Models	ESKB-032

When ordering additional switches:

Sensing Kits

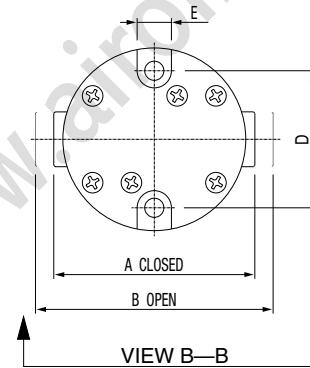
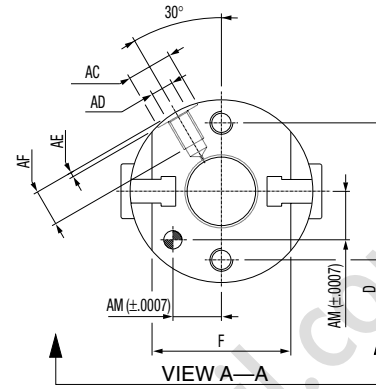
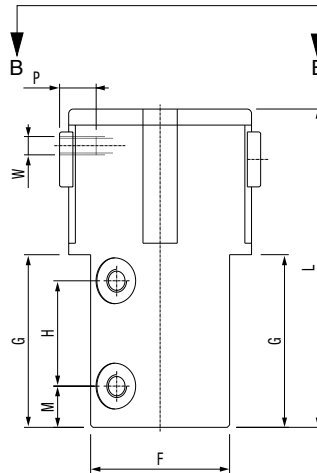
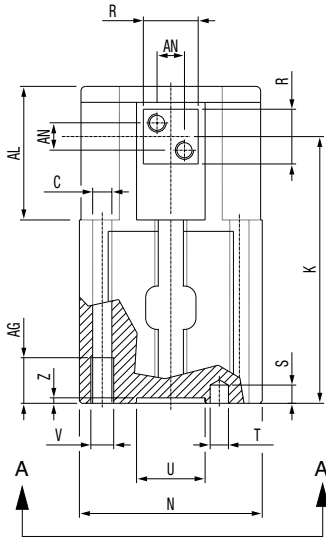
STANDARD CORD SET SWITCH		PART NO.
Hall Effect-PNP (Sourcing)		HPNPS31
Hall Effect-NPN (Sinking)		HNPNS32
Reed Switch		RSS02
QUICK DISCONNECT CORD SET		PART NO.
Hall Effect-PNP (Sourcing)		HPNPQ31
Hall Effect-NPN (Sinking)		HNPNQ32
Reed Switch		RSQ02
90° 5 meter cable		PXC90
Straight 5 meter cable		PXCST



Euro-Series Parallel Robotic Gripper

NUMATICS®

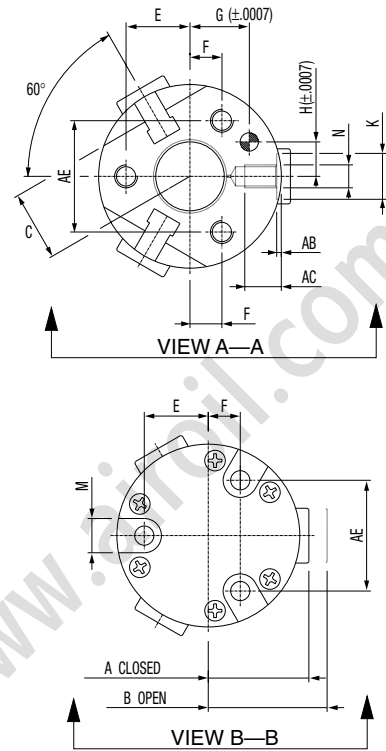
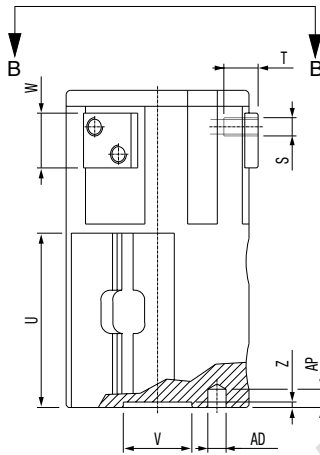
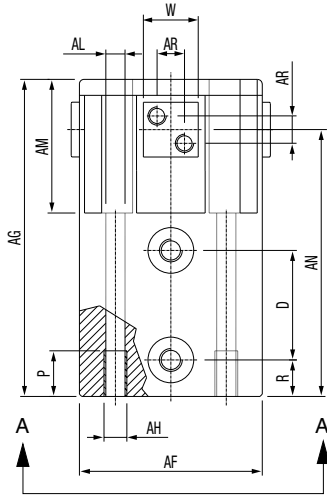
EPG Series



	EPG016		EPG025		EPG032	
	Inches	mm	Inches	mm	Inches	mm
A	1.7	44.0	2.1	55.0	2.6	66.0
B	2.0	52.0	2.6	68.0	3.3	84.0
C	0.157	4.0	0.196	5.0	0.26	6.8
D	1.18	30.0	1.59	40.5	1.88	48.0
E	0.29	7.5	0.37	9.5	0.43	11.0
F	1.19	30.4	1.67	42.6	1.85	47.0
G	1.48	37.7	1.88	48.0	2.14	54.5
H	0.90	23.0	1.18	30.0	1.14	29.0
K	2.30	58.5	2.93	74.5	3.40	86.5
L	2.73	69.5	3.46	88.0	4.05	103.0
M	0.35	9.0	0.51	13.0	0.70	18.0
N	1.57	40.0	1.96	50.0	2.36	60.0
P	0.23	6.0	0.31	8.0	0.39	10.0
R	0.47	12.0	0.59	15.0	0.70	18.0
S	0.157	4.0	0.23	6.0	0.31	8.0
T	M4	M4	M5	M5	M6	M6
U	0.59	15.0	0.78	20.0	0.09	25.0
V	10-32	M5	M6	M6	M8	M8
W	M4	M4	10-32	M5	M6	M6
Z	0.04	1.2	0.07	1.8	0.09	2.5
AC	0.39	10.0	0.39	10.0	0.62	16.0
AD	10-32	M5	10-32	M5	1/8 NPTF	1/8 NPTF
AE	0.03	1.0	0.03	1.0	0.05	1.5
AF	0.31	8.0	0.31	8.0	0.37	9.5
AG	0.39	10.0	0.47	12.0	0.59	15.0
AL	1.15	29.3	1.42	36.2	1.75	44.5
AM	0.41	10.6	0.56	14.3	0.66	17.0
AN	0.23	6.0	0.29	7.5	0.35	9.0



ETG Series



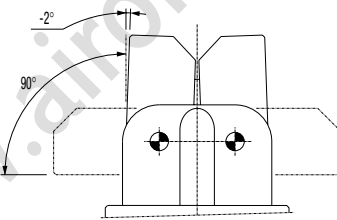
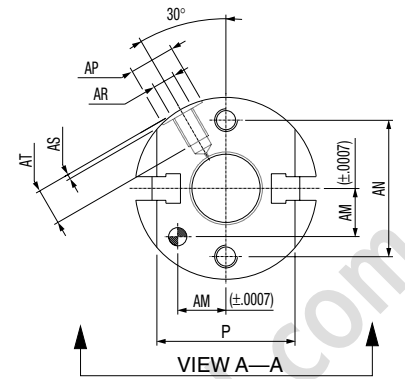
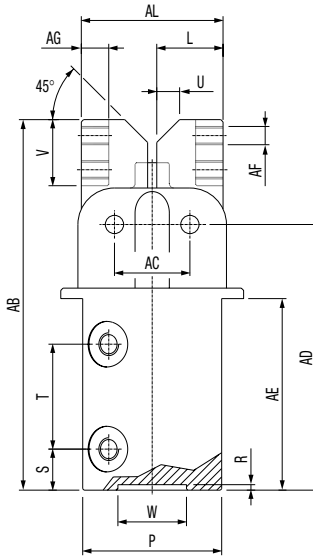
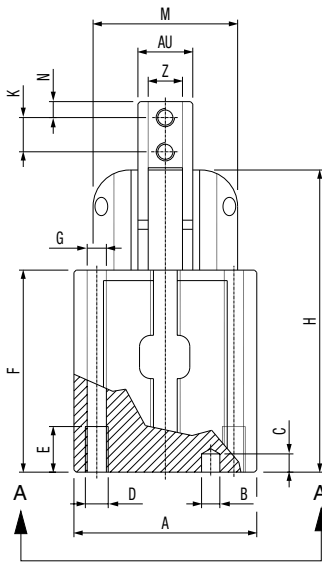
	ETG016		ETG025		ETG032	
	Inches	mm	Inches	mm	Inches	mm
A	0.86	22.0	1.08	27.5	1.29	33.0
B	1.02	26.0	1.33	34.0	1.65	42.0
C	0.59	15.2	0.83	21.3	0.92	23.5
D	0.90	23.0	1.18	30.0	1.14	29.0
E	0.55	14.0	0.79	20.2	0.94	24.0
F	0.27	7.0	0.39	10.1	0.47	12.0
G	0.51	13.0	0.66	17.0	0.80	20.5
H	0.29	7.5	0.39	10.0	0.49	12.5
K	0.39	10.0	0.39	10.0	0.62	16.0
M	0.29	7.5	0.37	9.5	0.43	11.0
N	10-32	M5	10-32	M5	1/8 NPTF	1/8 NPTF
P	0.39	10.0	0.47	12.0	0.59	15.0
R	0.35	9.0	0.51	13.0	0.70	18.0
S	M4	M4	10-32	M5	M6	M6
T	0.23	6.0	0.31	8.0	0.39	10.0
U	1.48	37.7	1.88	48.0	2.14	54.5
V	0.59	15.0	0.78	20.0	0.98	25.0
W	0.47	12.0	0.59	15.0	0.70	18.0
Z	0.04	1.2	0.07	1.8	0.09	2.5
AB	0.03	1.0	0.03	1.0	0.06	1.5
AC	0.31	8.0	0.31	8.0	0.37	9.5
AD	M4	M4	M5	M5	M6	M6
AE	0.95	24.2	1.37	35.0	1.63	41.5
AF	1.57	40.0	1.96	50.0	2.36	60.0
AG	2.73	69.5	3.46	88.0	4.05	103.0
AH	10-32	M5	M6	M6	M8	M8
AL	0.16	4.2	0.12	5.2	0.26	6.8
AM	1.15	29.3	1.42	36.2	1.75	44.5
AN	2.30	58.5	2.93	74.5	3.40	86.5
AP	0.15	4.0	0.23	6.0	0.31	8.0
AR	0.23	6.0	0.29	7.5	0.35	9.0



Euro-Series Parallel Robotic Gripper

NUMATICS®

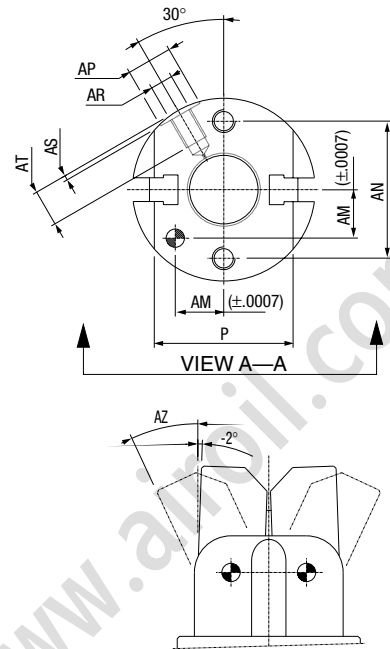
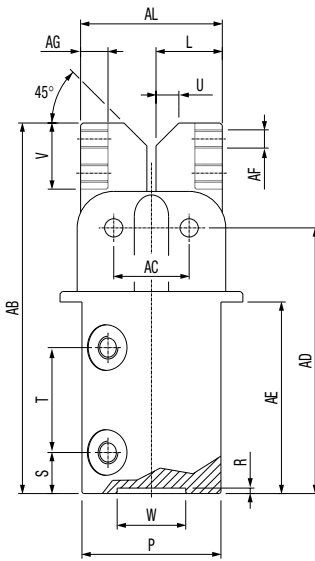
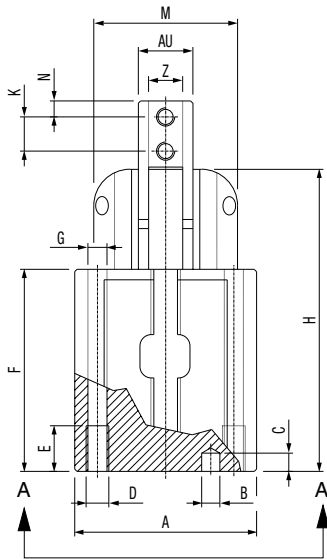
ERG Series



	ERG016		ERG025		ERG032	
	Inches	mm	Inches	mm	Inches	mm
A	1.57	40.0	1.96	50.0	2.36	60.0
B	M4	M4	M5	M5	M6	M6
C	0.15	4.0	0.23	6.0	0.31	8.0
D	M5	M5	M6	M6	M8	M8
E	0.39	10.0	0.47	12.0	0.59	15.0
F	1.74	44.3	2.34	59.5	2.65	67.4
G	0.15	4.2	0.19	5.2	0.27	6.8
H	2.60	66.25	3.66	93.0	4.24	107.9
K	0.29	7.55	0.39	10.0	0.51	13.0
L	0.57	14.5	0.82	21.0	1.06	27.0
M	1.27	32.5	1.73	44.0	2.12	54.0
N	0.13	3.5	0.19	5.0	0.23	6.0
P	1.19	30.4	1.67	42.6	1.85	47.0
R	0.04	1.2	0.07	1.8	0.09	2.5
S	0.35	9.0	0.51	13.0	0.70	18.0
T	0.90	23.0	1.18	30.0	1.14	29.0
U	0.19X45°	5X45°	0.31X45°	8X45°	0.43X45°	11X45°
V	0.57	14.5	0.78	20.0	0.98	25.0
W	0.59	15.0	0.78	20.0	0.98	25.0
Z	0.29	7.5	0.45	11.5	0.55	14.0
AB	3.19	81.25	4.48	114.0	5.29	134.4
AC	0.64	16.5	0.90	23.0	1.14	29.0
AD	2.29	58.25	3.14	81.0	3.67	93.4
AE	1.65	42.0	2.24	57.0	2.51	64.0
AF	M4	M4	10-32	M5	M6	M6
AG	0.23	6.0	0.33	8.5	0.43	11.0
AL	1.22	31.0	1.73	44.0	2.20	56.0
AM	0.41	10.6	0.56	14.3	0.66	17.0
AN	1.18	30.0	1.59	40.5	1.88	48.0
AP	0.39	10.0	0.39	10.0	0.62	16.0
AR	10-32	M5	10-32	M5	1/8 NPTF	1/8 NPTF
AS	0.03	1.0	0.03	1.0	0.05	1.5
AT	0.31	8.0	0.31	8.0	0.37	9.5
AU	0.47	12.0	0.70	18.0	0.90	23.0



EAG Series



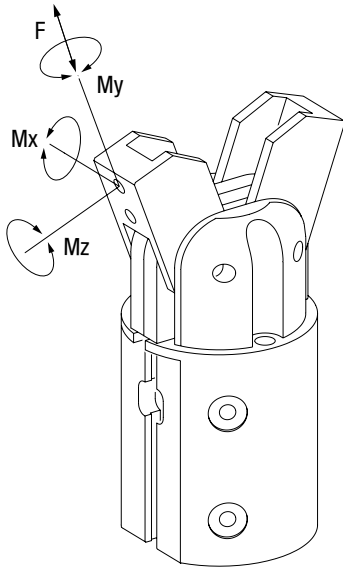
	EAG016		EAG025		EAG032	
	Inches	mm	Inches	mm	Inches	mm
A	1.57	40.0	1.96	50.0	2.36	60.0
B	0.15	4.0	0.19	5.0	0.23	6.0
C	0.15	4.0	0.23	6.0	0.31	8.0
D	M5	M5	M6	M6	M8	M8
E	0.39	10.0	0.47	12.0	0.59	15.0
F	1.74	44.3	2.34	59.5	2.65	67.4
G	0.15	4.2	0.19	5.2	0.27	6.8
H	2.60	66.25	3.66	93.0	4.24	107.9
K	0.29	7.55	0.39	10.0	0.51	13.0
L	0.57	14.5	0.82	21.0	1.06	27.0
M	1.27	32.5	1.73	44.0	2.12	54.0
N	0.13	3.5	0.19	5.0	0.23	6.0
P	1.19	30.4	1.67	42.6	1.85	47.0
R	0.04	1.2	0.07	1.8	0.09	25.0
S	0.35	9.0	0.51	13.0	0.70	18.0
T	0.90	23.0	1.18	30.0	1.14	29.0
U	0.19X45°	5X45°	0.31X45°	8X45°	0.43X45°	11X45°
V	0.57	14.5	0.78	20.0	0.98	25.0
W	0.59	15.0	0.78	20.0	0.98	25.0
Z	0.29	7.5	0.45	11.5	0.55	14.0
AB	3.19	81.25	4.48	114.0	5.29	134.4
AC	0.64	16.5	0.90	23.0	1.14	29.0
AD	2.29	58.25	3.14	81.0	3.67	93.4
AE	1.65	42.0	2.24	57.0	2.51	64.0
AF	M4	M4	10-32	M5	M6	M6
AG	0.23	6.0	0.33	8.5	0.43	11.0
AL	1.22	31.0	1.73	44.0	2.20	56.0
AM	0.41	10.6	0.56	14.3	0.66	17.0
AN	1.18	30.0	1.59	40.5	1.88	48.0
AP	0.39	10.0	0.39	10.0	0.62	16.0
AR	10-32	M5	10-32	M5	1/8 NPTF	1/8 NPTF
AS	0.03	1.0	0.03	1.0	0.05	1.5
AT	0.31	8.0	0.31	8.0	0.37	9.5
AU	0.47	12.0	0.70	18.0	0.90	23.0
AZ	19°	19°	20°	20°	21°	21°



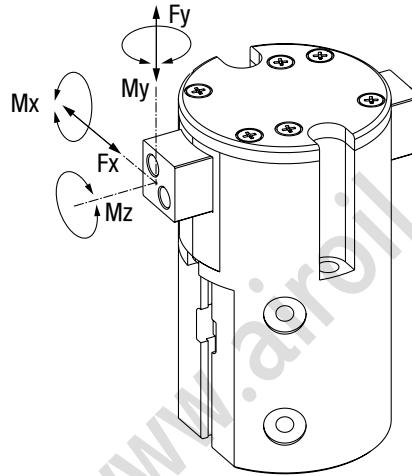
Euro-Series Parallel Robotic Gripper

numatics®

Typical For
EAG & ERG



Typical For
ETG & EPG



	EAG016 ERG016	EAG025 ERG025	EAG032 ERG032		EPG016 ETG016	EPG025 ETG025	EPG032 ETG032
F	6 lbs.	15 lbs.	29 lbs.	Fx	11 lbs.	22 lbs.	33 lbs.
Mx	10 in. lbs.	32 in. lbs.	73 in. lbs.	Fy	11 lbs.	22 lbs.	33 lbs.
My	11 in. lbs.	43 in. lbs.	97 in. lbs.	Mx	17 in. lbs.	54 in. lbs.	107 in. lbs.
Mz	10 in. lbs.	36 in. lbs.	81 in. lbs.	My	15 in. lbs.	45 in. lbs.	89 in. lbs.
				Mz	15 in. lbs.	45 in. lbs.	89 in. lbs.

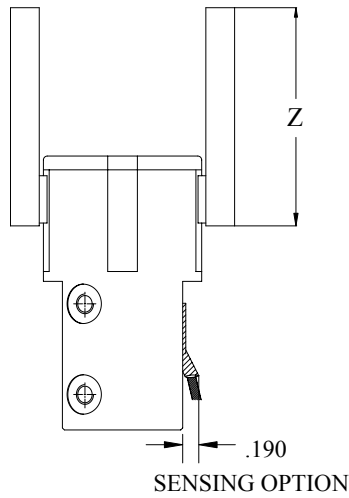
Forces @ 100 psi

	EPG016	EPG025	EPG032	ETG016	ETG025	ETG032
Force-open lbs.	31.0	57.0	93.0	31.0	57.0	93.0
Force-closed lbs.	27.0	51.0	83.0	27.0	51.0	83.0
Total Stroke in. (mm)	0.314 (8.0)	0.511 (13.0)	0.708 (18.0)	0.320 (8.0)	0.546 (14.0)	0.720 (18.2)
Weight lbs.	0.44	0.90	1.43	0.46	0.94	1.49
Displacement in3	0.183072	0.793312	1.586624	0.183072	0.793312	1.586624
Max Pressure psi	116.0	116.0	116.0	116.0	116.0	116.0

	ERG016	ERG025	ERG032	EAG016	EAG025	EAG032
Force-open lbs.	31.0	57.0	93.0	31.0	57.0	93.0
Force-closed lbs.	27.0	51.0	83.0	27.0	51.0	83.0
Total Stroke Deg.	184 deg.	184 deg.	184 deg.	42 deg.	44 deg.	46 deg.
Weight lbs.	0.35	0.81	1.3	0.33	0.79	1.2
Displacement in3	0.183072	0.793312	1.586624	0.183072	0.793312	1.586624
Max Pressure psi	116.0	116.0	116.0	116.0	116.0	116.0

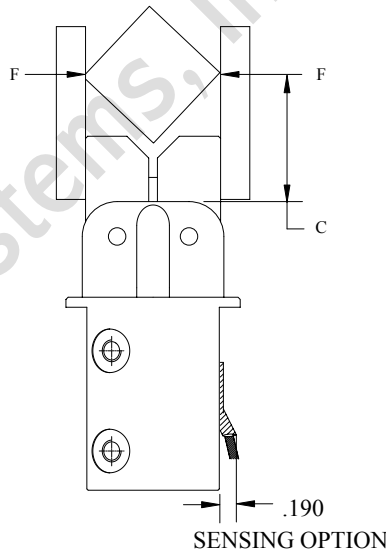


Grip Force VS. Finger Length



Grip force in pounds @ 100 psi

Z	EPG016	EPG025	EPG032	ETG016	ETG025	ETG032
1 inch	18	48	72	18	48	72
2 inches	10	40	64	10	40	64
3 inches	3	30	60	3	30	60



	Grip Force (lbs.)		Grip Force (Newtons)	
ERG016 EAG016	$F = \frac{(0.27) \times (P)}{(C+.315)}$	P=psi C=in.	$F = \frac{(442.44) \times (P)}{(C+8.001)}$	P=Bars C=mm
ERG025 EAG025	$F = \frac{(0.51) \times (P)}{(C+.472)}$	P=psi C=in.	$F = \frac{(835.73) \times (P)}{(C+11.988)}$	P=Bars C=mm
ERG032 EAG032	$F = \frac{(0.83) \times (P)}{(C+.570)}$	P=psi C=in.	$F = \frac{(1360.12) \times (P)}{(C+14.478)}$	P=Bars C=mm



Euro-Series Parallel Robotic Gripper

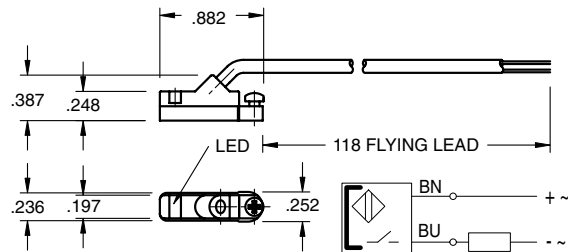
NUMATICS®

E Series Switch Information

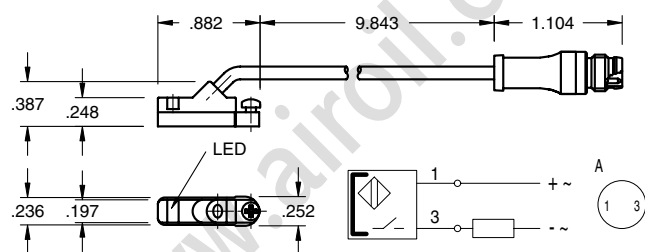
	SWITCH OR BRACKET DESCRIPTION	STANDARD PART NO.	QUICK DISCONNECT PART NO.
1	Hall Effect - PNP (Sourcing)	HPNPS31	HPNPQ31
1	Hall Effect - NPN (Sinking)	HNPNS32	HNPNQ32
1	Reed Switch	RSS02	RSQ02



RSS02 – Reed Switch (AC/DC NO), flying lead



RSQ02 – 8mm connector



Sensing Data

Ambient temperature range T_a	(°F/°C)	-4 to 176 (-20 to 80)
Frequency of operating cycles f at U_e	(kHz)	0.5
Turn on time t	(ms)	≤ 0.25
turn off time t	(ms)	0.03
LED function indication		yes

Electrical Data

Rated operational voltage U_e	(V)	3...130 AC/DC
Supply voltage U_B	(V)	3...130 AC/DC
Voltage drop U_d at I_e Stat./dyn.	(V)	3.5
Rated insulation voltage U_i	(V)	2750 DC (EN 60335-1)
Rated supply frequency	(Hz)	AC/DC
Rated operational current I_e	(mA)	50 (10W max.)
No-load supply current I_o at U_e d./und.	(mA)	0

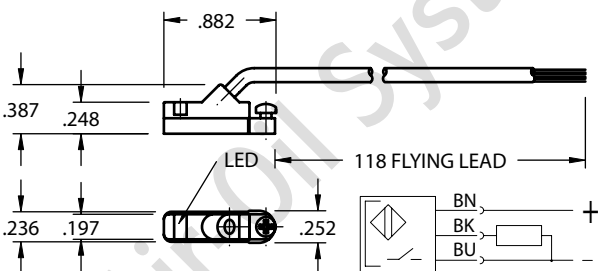
Observe polarity for correct LED function

Mechanical Data

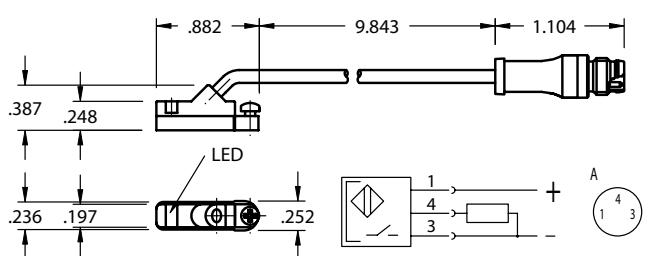
Housing material	Polyamide
Material of sensing face	Polyamide
Connection	PVC cable
Degree of Protection	IP 67
Rated shock: half-sinus, 50g, 11 ms	
Rated vibration environment: 10g, 10...2000 Hz, 90 min	



HPNPS31 – Electronic Switch (PNP NO), flying lead



HPNPQ31 – 8mm connector



Sensing Data

Ambient temperature range Δ	(°F/°C)	-13 to +158 (-25 to +70)
Temperature drift	(% of)	$\leq 0.3\%/^{\circ}\text{C}$
Frequency of operating cycles f at U_e	(kHz)	10
Turn on time t	(ms)	.05
turn off time t	(ms)	.05
Utilization categories		DC13
Function-/supply voltage indication		YES

Electrical Data

Rated operational voltage U_e	(V)	24 DC
Supply voltage U_B	(V)	10...30 DC
incl. ripple	(% of U_e)	15
Voltage drop U_d at I_e Stat./dyn.	(V)	1/-
Rated insulation voltage U_i	(V)	75 AC
Rated supply frequency	(Hz)	DC
Rated operational current I_e	(mA)	200
No-load supply current I_o at U_e d./und.	(mA)	25/13
Protected against polarity reversal		YES

Mechanical Data

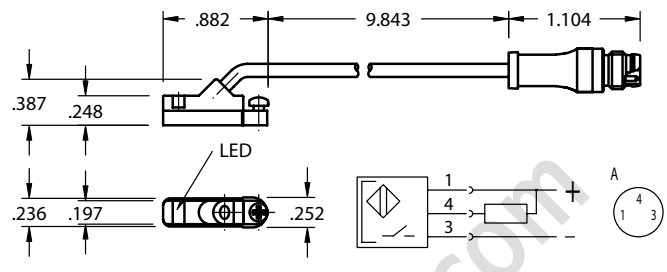
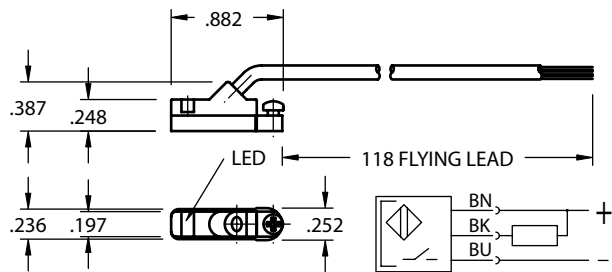
Housing material	Polyamide
Material of sensing face	Polyamide
Connection	PVC cable
Degree of Protection	IP 67
Rated shock: half-sinus, 30 g, 11 ms	
Rated vibration environment: 55 Hz, 1mm amplitude, 3 x 30	





HNPNS32 – Electronic Switch (NPN NO), flying lead

HNPNQ32 – 8mm connector



Sensing Data

Ambient temperature range t_d	(°F/°C)	-13 to +158 (-25 to +70)
Temperature drift	(% of S_r)	$\leq 0.3\%/^{\circ}\text{C}$
Frequency of operating cycles f at U_e	(kHz)	10
Turn on time t	(ms)	.05
turn off time t	(ms)	.05
Utilization categories		DC13
Function–supply voltage indication		YES

Mechanical Data

Housing material	Polyamide
Material of sensing face	Polyamide
Connection	PVC cable
Degree of Protection	IP 67
Rated shock: half-sinus, 30 g, 11 ms	
Rated vibration environment: 55 Hz, 1mm amplitude, 3 x 30	

Electrical Data

Rated operational voltage U_e	(V)	24 DC
Supply voltage U_B	(V)	10...30 DC
incl. ripple	(% of U_e)	15
Voltage drop U_d at I_e Stat./dyn.	(V)	1/-
Rated insulation volatage U_i	(V)	75 AC
Rated supply frequency	(Hz)	DC
Rated operational current I_e	(mA)	200
No-load supply current I_o at U_e d./und.	(mA)	25/13
Protected against polarity reversal		YES

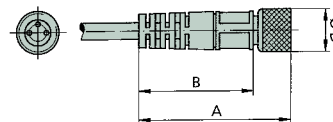


Female Connectors for Reed Switches and Hall Effect Sensors

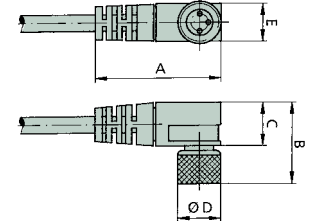
Dimensions (mm)

TYPE	ORDER CODE
Straight, 5 m Cable	PXCST
Elbow, 5 m Calbe	PXC90

Straight Type



Elbow Type



NUMATICS®

World Class Supplier
of Pneumatic Components



World Headquarters

Numatics Incorporated

Phone: 248-887-4111
Fax: 248-887-9190

UNITED STATES

Numatics – Air Preparation

Phone: 810-667-3900
Fax: 810-667-3902

Numatics – Valves

Phone: 248-887-4111
Fax: 248-887-9190

Numatics – Miniature Valves

Phone: 248-960-1400
Fax: 248-960-2160

Numatics – Cylinders

Phone: 615-771-1200
Fax: 615-771-1201

Numatics – Rodless Cylinders

Phone: 519-452-1777
Fax: 519-452-3995

Numatics – Automation

Phone: 440-934-3200
Fax: 440-934-2288

CANADA

Ontario

Numatics, Ltd.
Phone: 519-452-1777
Fax: 519-452-3995

Quebec

Numatics, Ltd.
Phone: 514-332-6444
Fax: 514-332-9273

British Columbia

Numatics, Ltd.
Phone: 604-574-0401
Fax: 604-574-3713

EUROPE

Germany – European Headquarters

Numatics GmbH
Phone: 011-49-22 41-31 60-0
Fax: 011-49-22 41-31 60 40

Hungary

Numatics Kft.
Phone: 011-36-13 82 21 35
Fax: 011-36-12 04 39 47

EUROPE

England

Numatics Limited
Phone: 011-44-1525-37 07 35
Fax: 011-44-1525-38 25 67

France

Numatics s.a.r.l.
Phone: 011-33-1 41 21 48 88
Fax: 011-33-1 41 21 48 89

Italy

Numatics srl
Phone: 011-39-030-373 19 99
Fax: 011-39-030-373 19 81

Netherlands

Numatics B.V.
Phone: 011-31-418-65 29 50
Fax: 011-31-418-65 29 43

Spain

Numatics Spain S.L.
Phone: 011-34-93-221 21 96
Fax: 011-34-93-221 35 14

AFRICA

South Africa

Numatics SA (Pty) Ltd.
Phone: 011-27-11-8 65 44 52
Fax: 011-27-11-8 65 42 90

LATIN & SOUTH AMERICA

Mexico

Numatics de Mexico S.A. de C.V.
Phone: 011-52-222-284 6176
Fax: 011-52-222-284 6179

Brazil

Valvair Comercial Ltda.
Phone: 011-55-12-351 2874
Fax: 011-55-12-351 1958

ASIA & PACIFIC

Australia

Numatics Australia Pty. Ltd.
Phone: 011-61-3-95 63 86 00
Fax: 011-61-3-95 63 85 11

Taiwan – Asian Headquarters

Numatics Co, Ltd. Asia
Phone: 011-886-2-29 15 16 05
Fax: 011-886-2-29 14 18 97

For a comprehensive listing of all Numatics production and distribution facilities worldwide, visit www.numatics.com