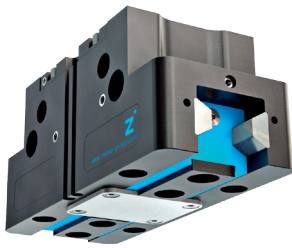


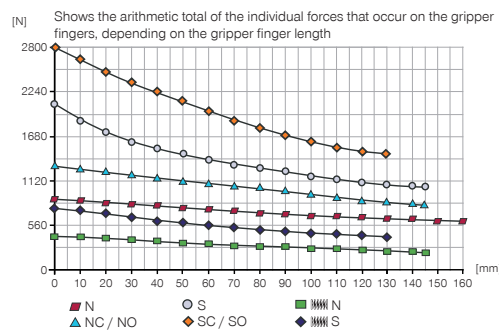
# 2-JAW PARALLEL GRIPPERS

## INSTALLATION SIZE GPP5010

### ▶ PRODUCT SPECIFICATIONS

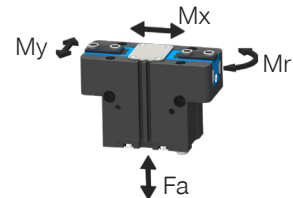


#### ▶ Gripping force diagram



#### ▶ Forces and moments

Displays static forces and moments that can also have an effect, besides the gripping force.



Mr [Nm]	75
Mx [Nm]	125
My [Nm]	95
Fa [N]	2700

### ▶ TECHNICAL DATA

#### ▶ Technical Data\*

Order no.	GPP5010N-00-A	GPP5010NC-00-A	GPP5010NO-00-A	GPP5010S-00-A	GPP5010SC-00-A	GPP5010SO-00-A
Stroke per jaw [mm]	10	10	10	5	5	5
Gripping force in closing [N]	885	1260		1940	2750	
Gripping force in opening [N]	945		1320	2080		2890
Gripping force secured by spring min. [N]		375	375		810	810
Closing time [s]	0.06	0.05	0.08	0.06	0.05	0.08
Opening time [s]	0.06	0.08	0.05	0.06	0.08	0.05
Permissible weight per jaw max [kg]	1.3	1.3	1.3	1.3	1.3	1.3
Length of the gripper fingers max. [mm]	160	145	145	145	130	130
Repetition accuracy +/- [mm]	0.01	0.01	0.01	0.01	0.01	0.01
Operating pressure min. [bar]	3	4	4	3	4	4
Operating pressure max. [bar]	8	7	7	8	7	7
Operating temperature [°C]	-10 ... +90	-10 ... +90	-10 ... +90	-10 ... +90	-10 ... +90	-10 ... +90
Air volume per cycle [cm³]	44	92	92	44	92	92
Protection to IEC 60529	IP64	IP64	IP64	IP64	IP64	IP64
Weight [kg]	0.87	1.09	1.09	0.87	1.09	1.09

#### ▶ Technical Data - Protector Version

Order no.	GPP5010N-21-A	GPP5010NC-21-A	GPP5010NO-21-A	GPP5010S-21-A	GPP5010SC-21-A	GPP5010SO-21-A
Protection to IEC 60529	IP67**	IP67**	IP67**	IP67**	IP67**	IP67**
Weight [kg]	1.09	1.31	1.31	1.09	1.31	1.31

#### ▶ Technical Data - High Temperature Version

Order no.	GPP5010N-20-A	GPP5010NC-20-A	GPP5010NO-20-A	GPP5010S-20-A	GPP5010SC-20-A	GPP5010SO-20-A
Operating temperature [°C]	-10 ... +130	-10 ... +130	-10 ... +130	-10 ... +130	-10 ... +130	-10 ... +130

#### ▶ Technical Data - High Temperature Protector Version

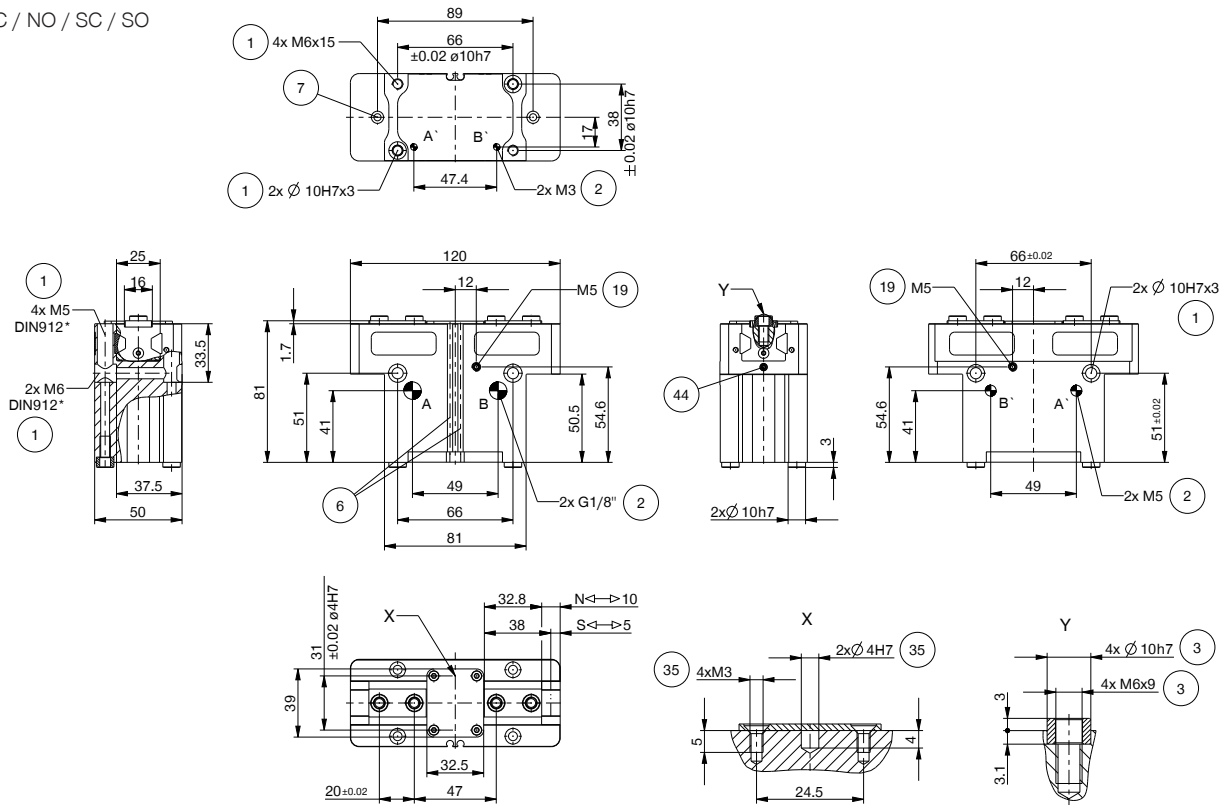
Order no.	GPP5010N-24-A	GPP5010NC-24-A	GPP5010NO-24-A	GPP5010S-24-A	GPP5010SC-24-A	GPP5010SO-24-A
Operating temperature [°C]	-10 ... +130	-10 ... +130	-10 ... +130	-10 ... +130	-10 ... +130	-10 ... +130
Protection to IEC 60529	IP67**	IP67**	IP67**	IP67**	IP67**	IP67**
Weight [kg]	1.09	1.31	1.31	1.09	1.31	1.31

\*All data measured at 6 bar

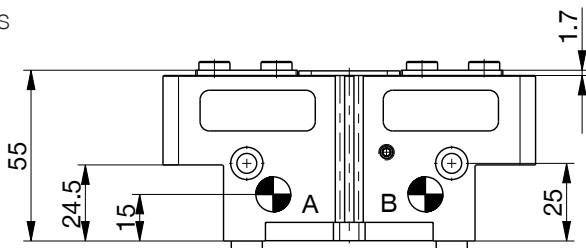
\*\* with purged air (max. 0,5 bar)

## TECHNICAL DRAWINGS

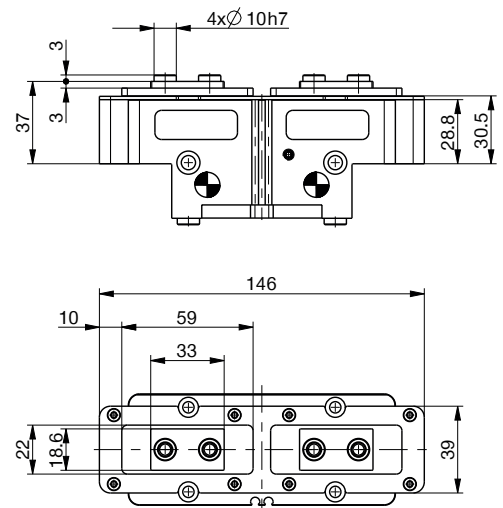
NC / NO / SC / SO



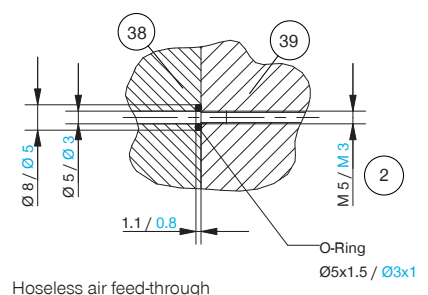
N / S



Protector version



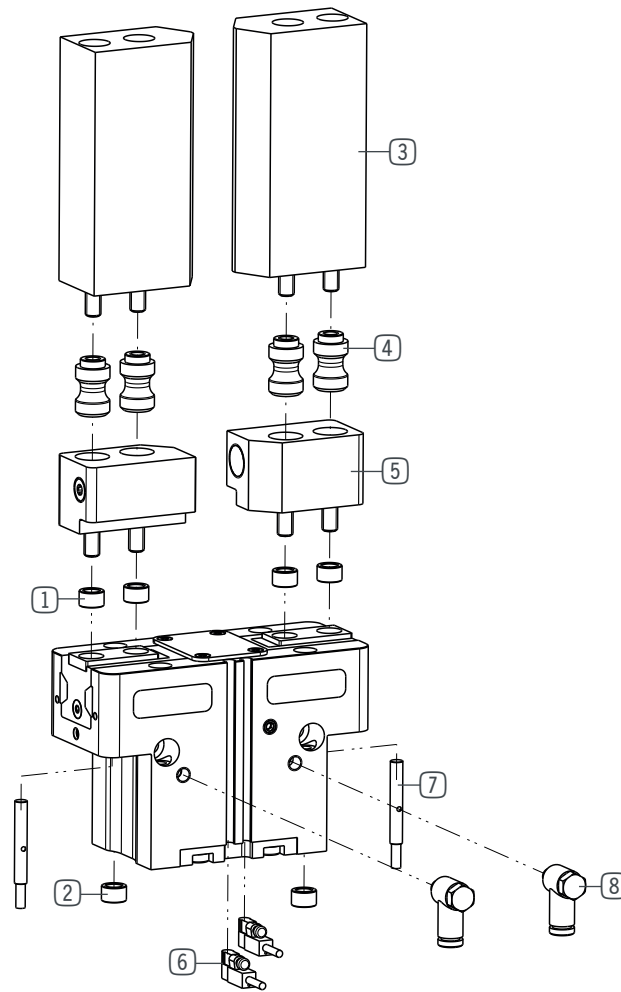
- |   |                                       |
|---|---------------------------------------|
| ① Gripper attachment                                | ③⑨ Gripper                            |
| ② Energy supply                                     | ④④ Clamp for sensor                   |
| ③ Fixing for gripper finger                         | ④⑤ Switch cam adjustment              |
| ⑥ Integrated slot for magnetic field sensor         | Ⓐ Air connection (close)              |
| ⑦ Mounting block                                    | Ⓑ Air connection (open)               |
| ⑱ Air purge connection option                       | Ⓐ Air connection, alternative (close) |
| ③⑤ Attachment option for customer-specific fittings | Ⓑ Air connection, alternative (open)  |
| ③⑧ Adapter  |                                       |



Hoseless air feed-through

# 2-JAW PARALLEL GRIPPERS

## INSTALLATION SIZE GPP5010



### ▶ INCLUDED IN DELIVERY



Centering Disc

018187

## ▶ RECOMMENDED ACCESSORIES



Universal jaw aluminium

**UB5010AL**



Universal jaw steel

**UB5010ST**



Aluminum adjustment jaw

**EB5010AL**



Steel adjustment jaw

**EB5010ST**



Changeable jaw, loose-part-set

**WB5010L**



Changeable jaw, fix-part

**WB5010F**



Inductive Proximity Switch Cable 0,3 m - Connector M8

**NJ4-E2SK-01**



Magnetic field sensor Angled Cable 0,3 m - Connector M8

**MFS103SKHC**



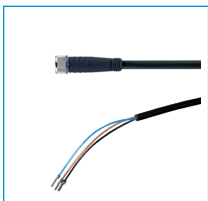
Magnetic field sensor Straight Cable 0,3 m - Connector M8

**MFS204SKHC**



2-Position-Sensor Cable 0,3 m - Connector M8

**MFSP2SKHC-02**



Plug-in connector Straight Cable 5m - Socket M8 (female)

**KAG500**



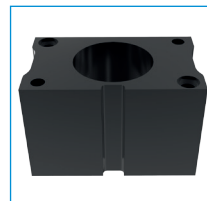
Angled Fittings - Quick Connect Style

**WV1-8X6**



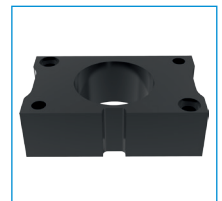
Pressure Safety Valve

**DSV1-8**



Compensation module N / S

**ZUB5010PNS**

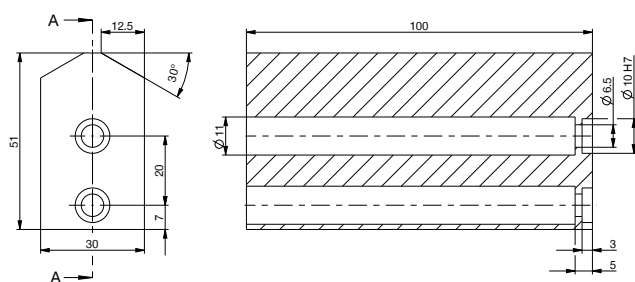


Compensation module NC / NO / SC / SO

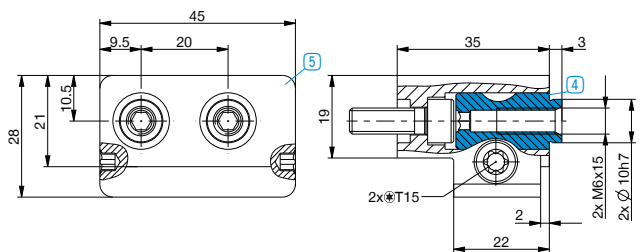
**ZUB5010PCO**

## ▶ TECHNICAL DRAWINGS ACCESSORIES

One universal jaw is required for each gripper jaw **3**



For each gripper jaw, one interchangeable jaw loose part set **4** and one interchangeable jaw fixed part **5** are needed



Compensation module for compensating for the height differences between the pneumatic and electric gripper version

